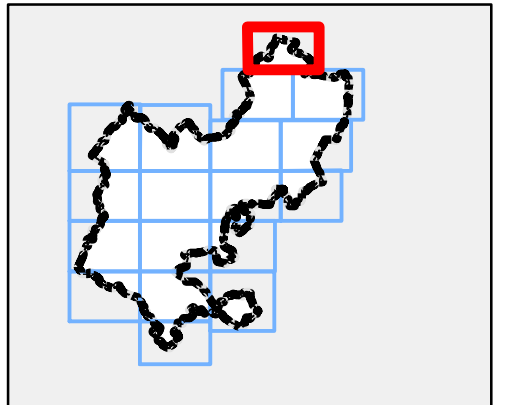
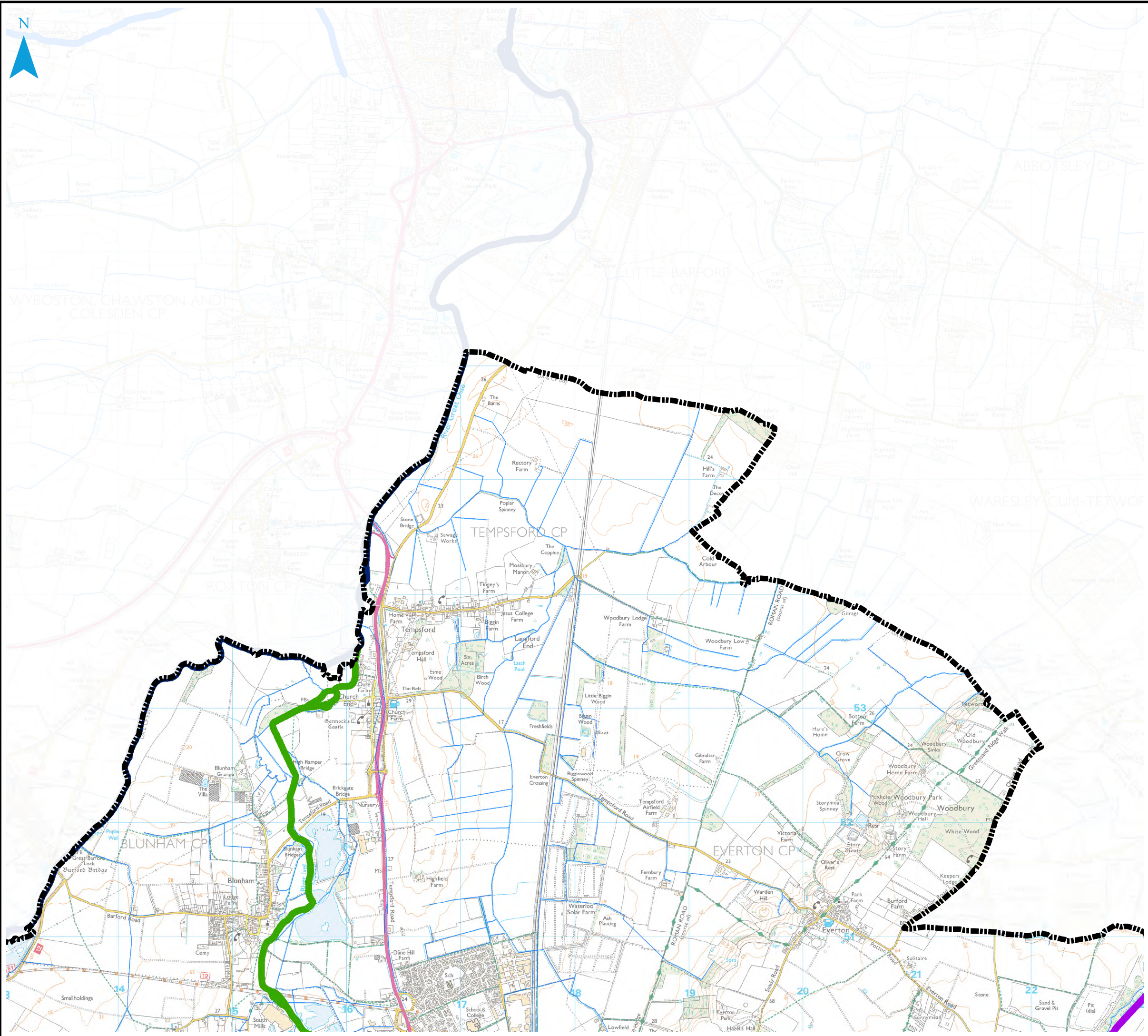




Appendix A: Water Courses





Legend

-  Central Bedfordshire Council Boundary
-  Watercourses
- CBC Key Watercourses**
-  Potton Brook
-  Cat Ditch
-  Clipstone Brook
-  Gransden Brook
-  Honeydon Brook
-  Mill Race
-  Ouzel Brook
-  Pix Brook
-  Potton Brook
-  River Flit
-  River Gade
-  River Great Ouse
-  River Hit
-  River Hiz
-  River Ivel
-  River Ivel Navigation
-  River Lea or Lee
-  River Ouzel
-  River Rhee
-  River Ver



REF	Date	Comments
A	July 16	Draft v1.0
B		
C		

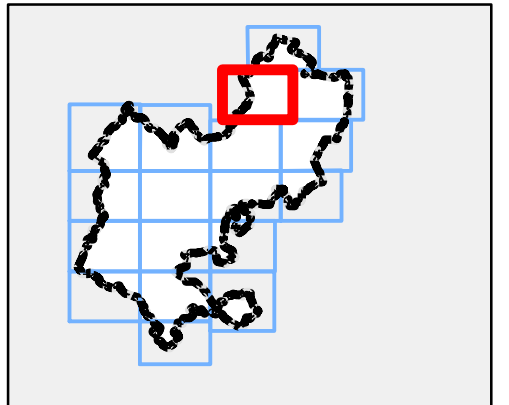
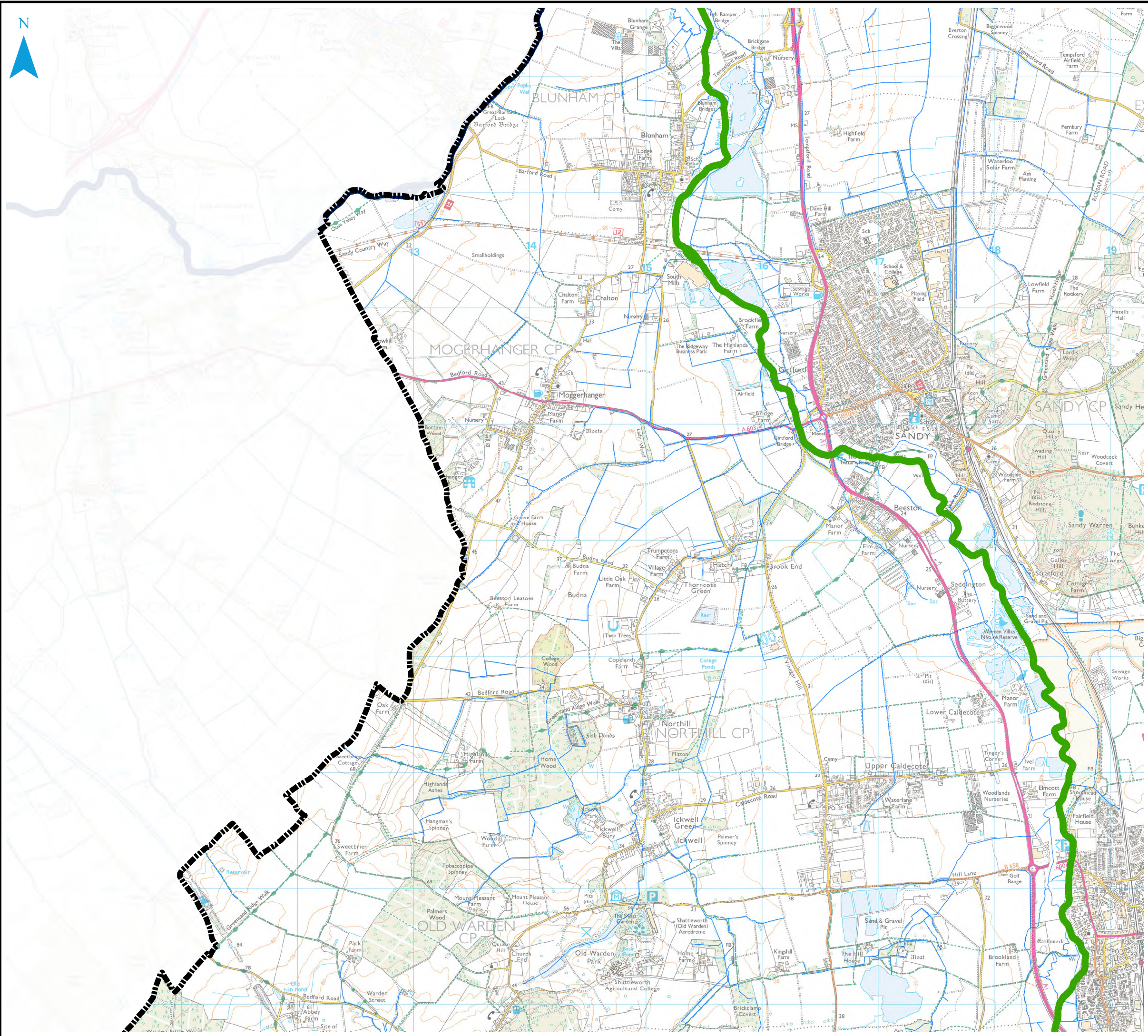
Reproduced from Ordnance Survey mapping with the permission of Ordnance Survey on behalf of the Controller of Her Majesty's Stationary Office. © Crown Copyright and database right 2016. Ordnance Survey 100049029. Central Bedfordshire Council
 EA DRN: Special licence - Non-commercial Ref: Z31600

CENTRAL BEDFORDSHIRE COUNCIL SFRA APPENDIX A CBC WATERCOURSES

Sheet No: 1 of 18 Index Number: CBC_SFRA_1

This document is the property of Jeremy Benn Associates Ltd. It shall not be reproduced in whole or in part, nor disclosed to a third party, without the permission of Jeremy Benn Associates Ltd.





Legend

-  Central Bedfordshire Council Boundary
-  Watercourses
- CBC Key Watercourses**
-  Potton Brook
-  Cat Ditch
-  Clipstone Brook
-  Gransden Brook
-  Honeydon Brook
-  Mill Race
-  Ouzel Brook
-  Pix Brook
-  Potton Brook
-  River Flit
-  River Gade
-  River Great Ouse
-  River Hit
-  River Hiz
-  River Ivel
-  River Ivel Navigation
-  River Lea or Lee
-  River Ouzel
-  River Rhee
-  River Ver



REF	Date	Comments
A	July 16	Draft v1.0
B		
C		

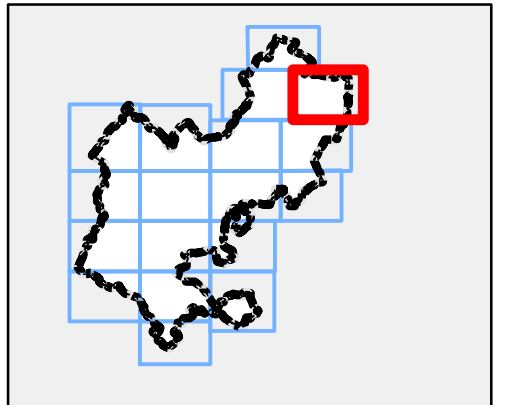
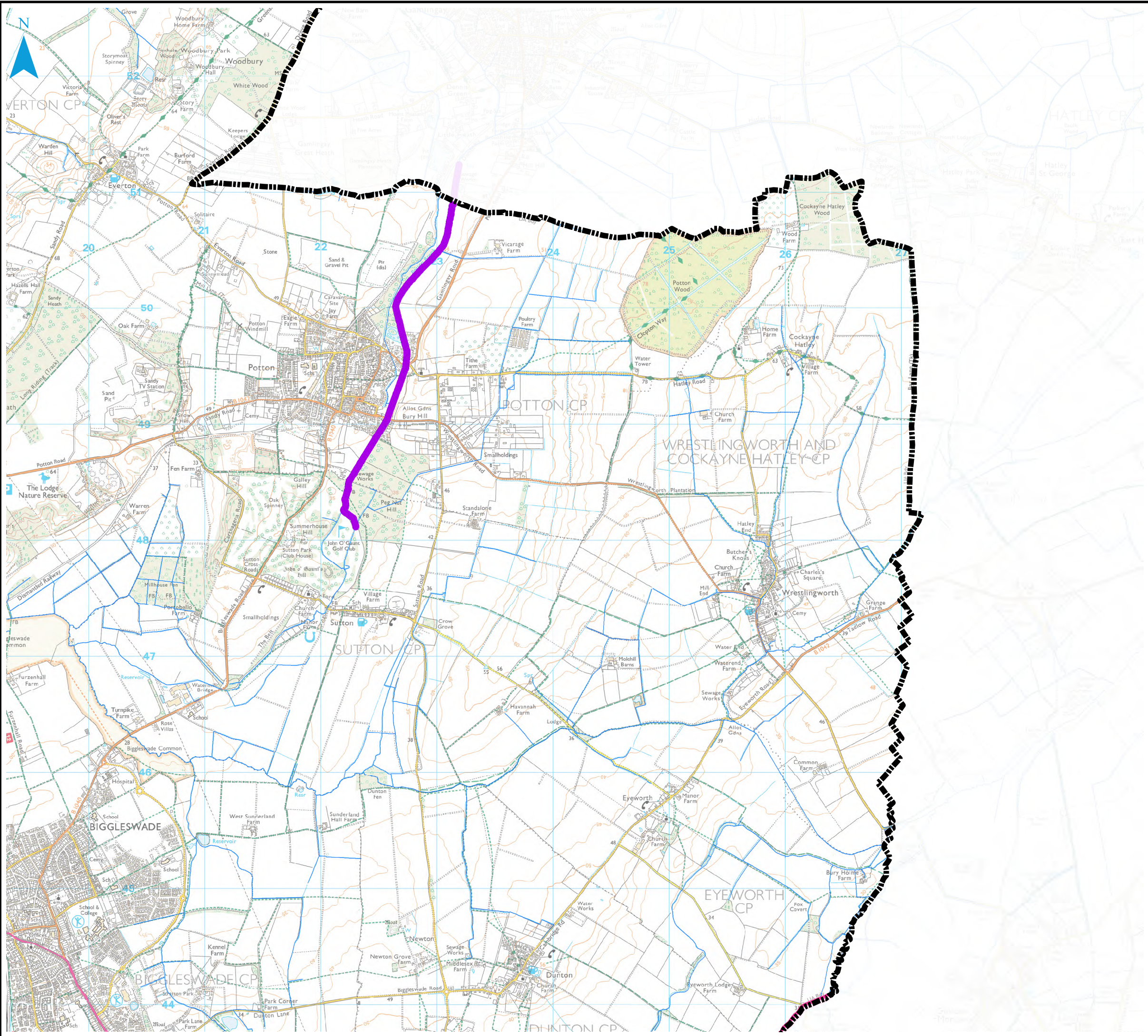
Reproduced from Ordnance Survey mapping with the permission of Ordnance Survey on behalf of the Controller of Her Majesty's Stationary Office. © Crown Copyright and database right 2016. Ordnance Survey 100049029. Central Bedfordshire Council
 EA DRN: Special licence – Non-commercial Ref: Z31600

CENTRAL BEDFORDSHIRE COUNCIL SFRA APPENDIX A CBC WATERCOURSES

Sheet No: 2 of 18 Index Number: CBC_SFRA_2

This document is the property of Jeremy Benn Associates Ltd. It shall not be reproduced in whole or in part, nor disclosed to a third party, without the permission of Jeremy Benn Associates Ltd.





Legend

-  Central Bedfordshire Council Boundary
-  Watercourses
- CBC Key Watercourses**
-  Potton Brook
-  Cat Ditch
-  Clipstone Brook
-  Gransden Brook
-  Honeydon Brook
-  Mill Race
-  Ouzel Brook
-  Pix Brook
-  Potton Brook
-  River Flit
-  River Gade
-  River Great Ouse
-  River Hit
-  River Hiz
-  River Ivel
-  River Ivel Navigation
-  River Lea or Lee
-  River Ouzel
-  River Rhee
-  River Ver



REF	Date	Comments
A	July 16	Draft v1.0
B		
C		

Reproduced from Ordnance Survey mapping with the permission of Ordnance Survey on behalf of the Controller of Her Majesty's Stationary Office. © Crown Copyright and database right 2016. Ordnance Survey 100049029. Central Bedfordshire Council
 EA DRN: Special licence – Non-commercial Ref: Z31600

CENTRAL BEDFORDSHIRE COUNCIL SFRA APPENDIX A CBC WATERCOURSES

Sheet No: 3 of 18 Index Number: CBC_SFRA_3

This document is the property of Jeremy Benn Associates Ltd. It shall not be reproduced in whole or in part, nor disclosed to a third party, without the permission of Jeremy Benn Associates Ltd.

