

Legend

- Central Bedfordshire Council Boundary
- Watercourses
- CBC Key Watercourses**
- Potton Brook
- Cat Ditch
- Clipstone Brook
- Gransden Brook
- Honeydon Brook
- Mill Race
- Ouzel Brook
- Pix Brook
- Potton Brook
- River Flit
- River Gade
- River Great Ouse
- River Hit
- River Hiz
- River Ivel
- River Ivel Navigation
- River Lea or Lee
- River Ouzel
- River Rhee
- River Ver



| REF | Date | Comments |
|-----|---------|------------|
| A | July 16 | Draft v1.0 |
| B | | |
| C | | |

Reproduced from Ordnance Survey mapping with the permission of Ordnance Survey on behalf of the Controller of Her Majesty's Stationary Office. © Crown Copyright and database right 2016. Ordnance Survey 100049029. Central Bedfordshire Council
 EA DRN: Special licence - Non-commercial Ref: Z31600

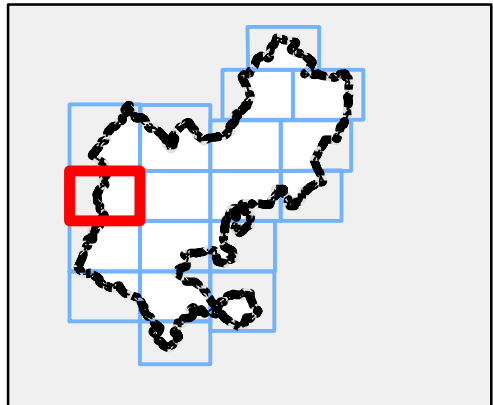
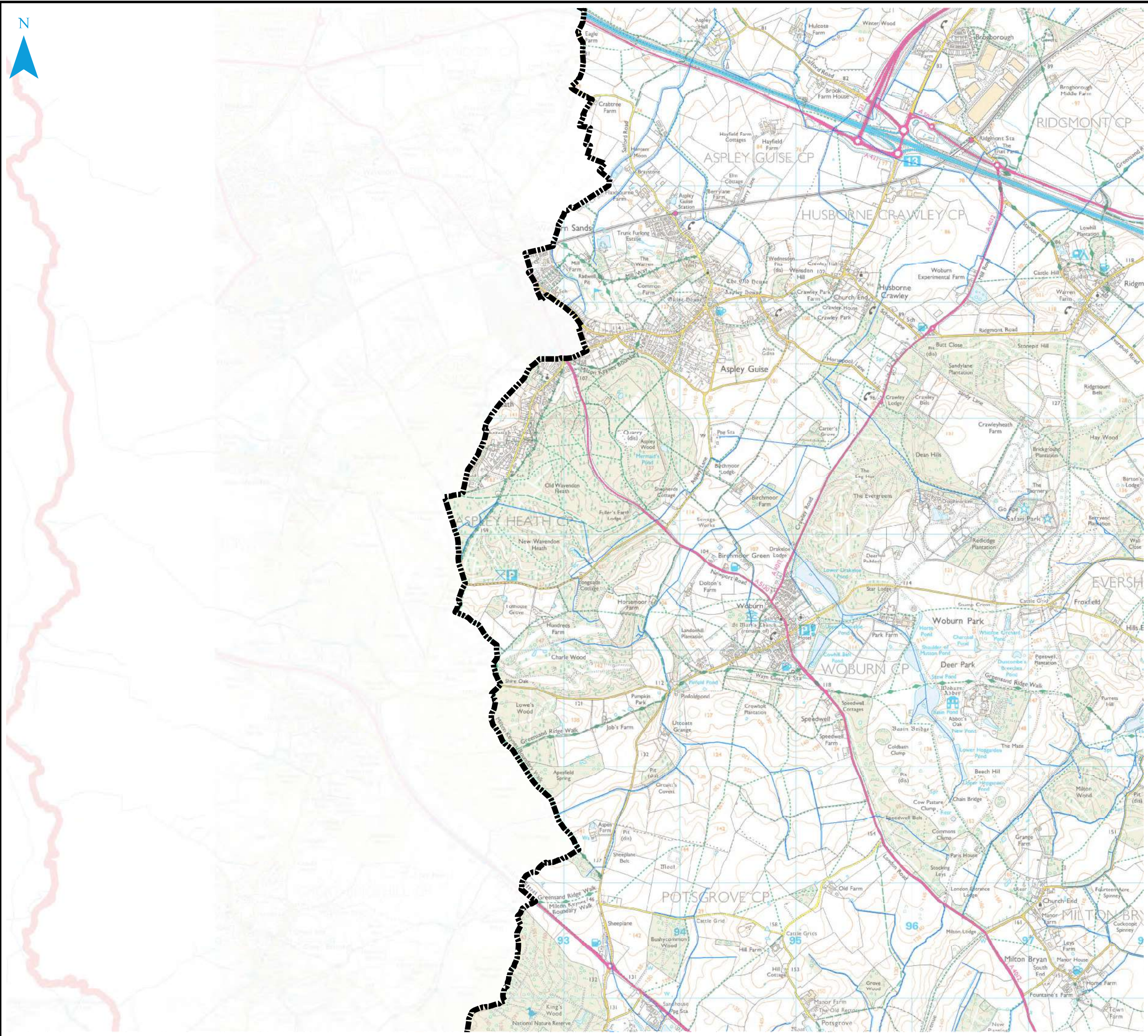
CENTRAL BEDFORDSHIRE COUNCIL SFRA APPENDIX A CBC WATERCOURSES

Sheet No: 7 of 18 Index Number: CBC_SFRA_7

This document is the property of Jeremy Benn Associates Ltd. It shall not be reproduced in whole or in part, nor disclosed to a third party, without the permission of Jeremy Benn Associates Ltd.



N



Legend

-  Central Bedfordshire Council Boundary
-  Watercourses



| REF | Date | Comments |
|-----|---------|------------|
| A | July 16 | Draft v1.0 |
| B | | |
| C | | |

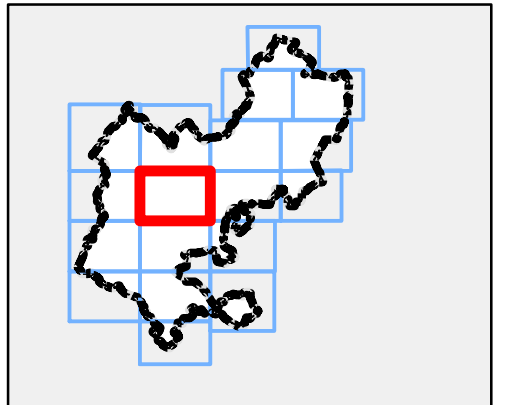
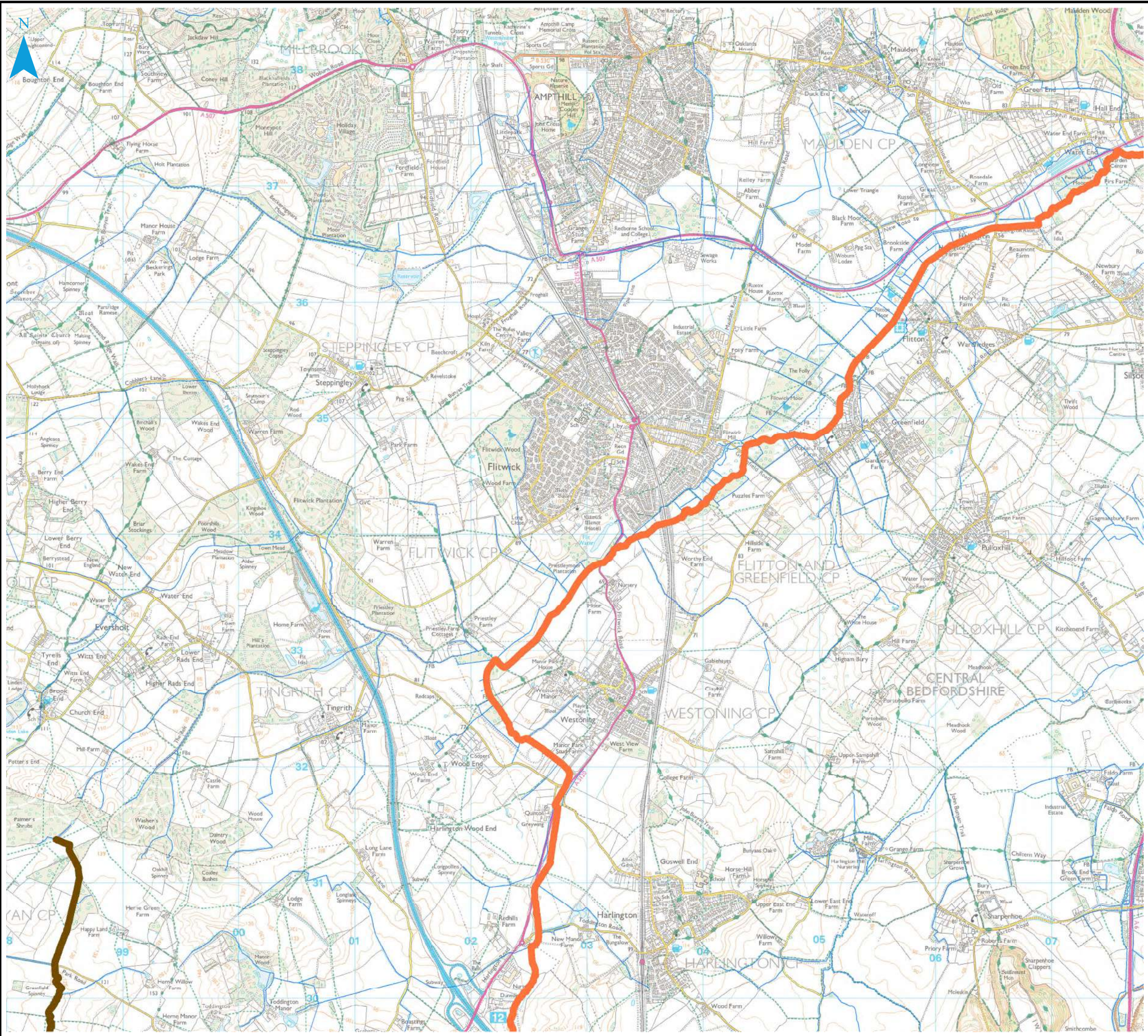
Reproduced from Ordnance Survey mapping with the permission of Ordnance Survey on behalf of the Controller of Her Majesty's Stationary Office. © Crown Copyright and database right 2016. Ordnance Survey 100049029. Central Bedfordshire Council
 EA DRN: Special licence – Non-commercial Ref: Z31600

CENTRAL BEDFORDSHIRE COUNCIL SFRA APPENDIX A CBC WATERCOURSES

Sheet No: 8 of 18 Index Number: CBC_SFRA_8

This document is the property of Jeremy Benn Associates Ltd. It shall not be reproduced in whole or in part, nor disclosed to a third party, without the permission of Jeremy Benn Associates Ltd.





Legend

- Central Bedfordshire Council Boundary
- Watercourses
- CBC Key Watercourses**
- Potton Brook
- Cat Ditch
- Clipstone Brook
- Gransden Brook
- Honeydon Brook
- Mill Race
- Ouzel Brook
- Pix Brook
- Potton Brook
- River Flit
- River Gade
- River Great Ouse
- River Hit
- River Hiz
- River Ivel
- River Ivel Navigation
- River Lea or Lee
- River Ouzel
- River Rhee
- River Ver



| REF | Date | Comments |
|-----|---------|------------|
| A | July 16 | Draft v1.0 |
| B | | |
| C | | |

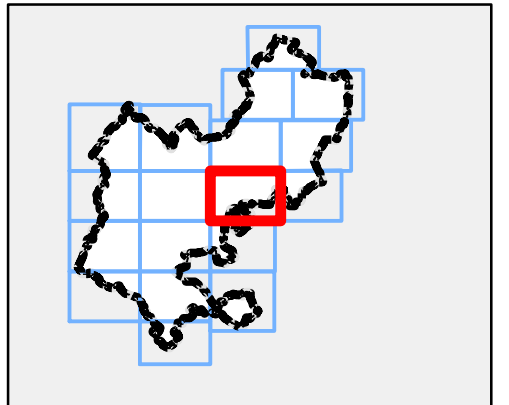
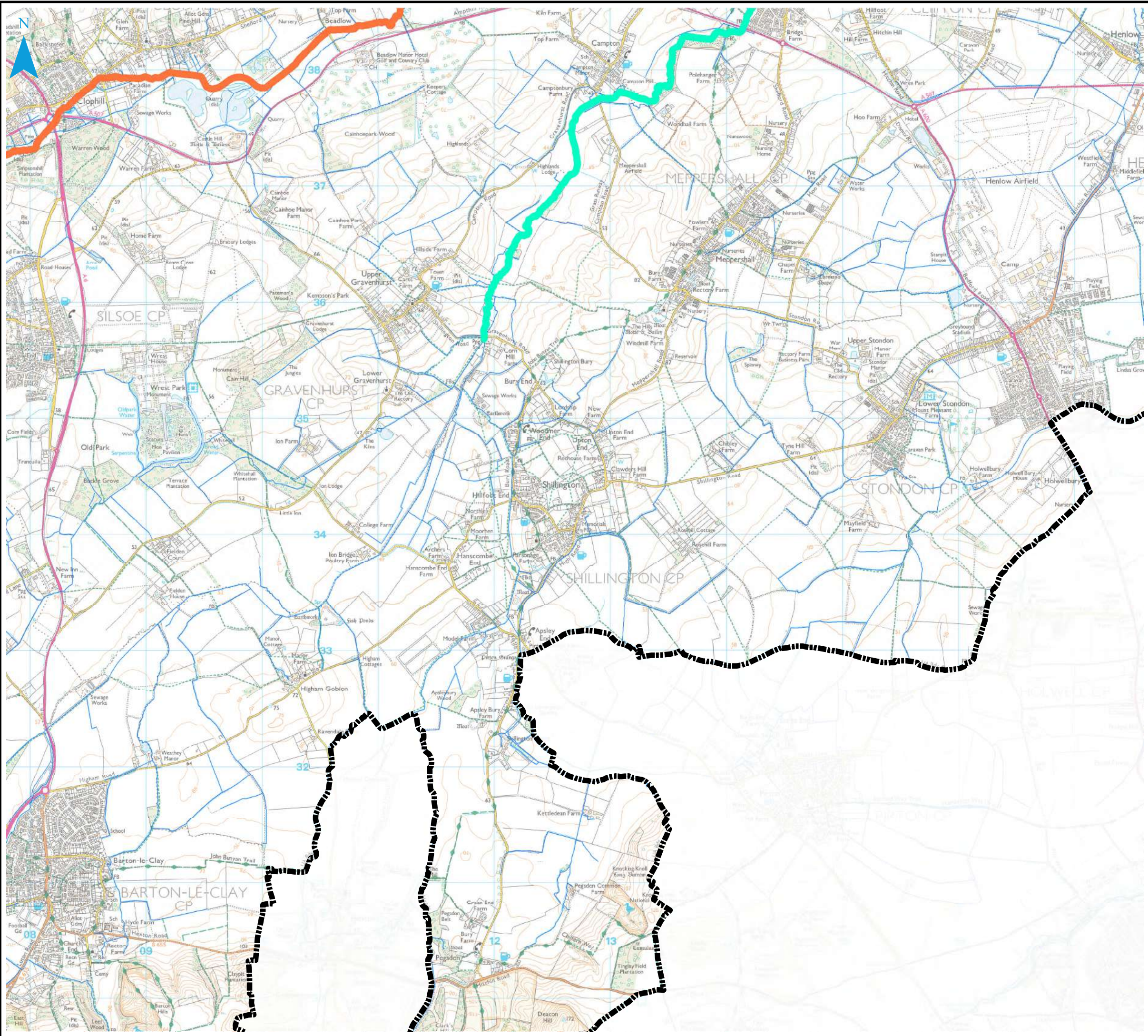
Reproduced from Ordnance Survey mapping with the permission of Ordnance Survey on behalf of the Controller of Her Majesty's Stationary Office. © Crown Copyright and database right 2016. Ordnance Survey 100049029. Central Bedfordshire Council
 EA DRN: Special licence - Non-commercial Ref: Z31600

CENTRAL BEDFORDSHIRE COUNCIL SFRA APPENDIX A CBC WATERCOURSES

Sheet No: 9 of 18 Index Number: CBC_SFRA_9

This document is the property of Jeremy Benn Associates Ltd. It shall not be reproduced in whole or in part, nor disclosed to a third party, without the permission of Jeremy Benn Associates Ltd.





Legend

- Central Bedfordshire Council Boundary
- Watercourses
- CBC Key Watercourses**
- Potton Brook
- Cat Ditch
- Clipstone Brook
- Gransden Brook
- Honeydon Brook
- Mill Race
- Ouzel Brook
- Pix Brook
- Potton Brook
- River Flit
- River Gade
- River Great Ouse
- River Hit
- River Hiz
- River Ivel
- River Ivel Navigation
- River Lea or Lee
- River Ouzel
- River Rhee
- River Ver



| REF | Date | Comments |
|-----|---------|------------|
| A | July 16 | Draft v1.0 |
| B | | |
| C | | |

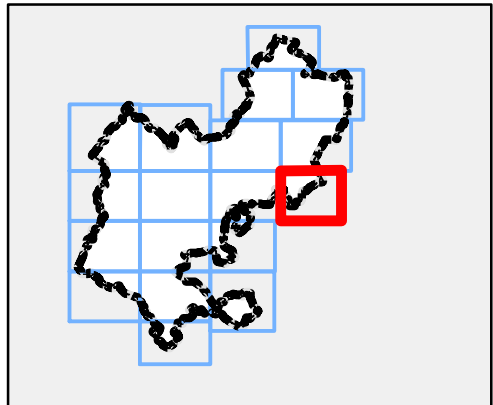
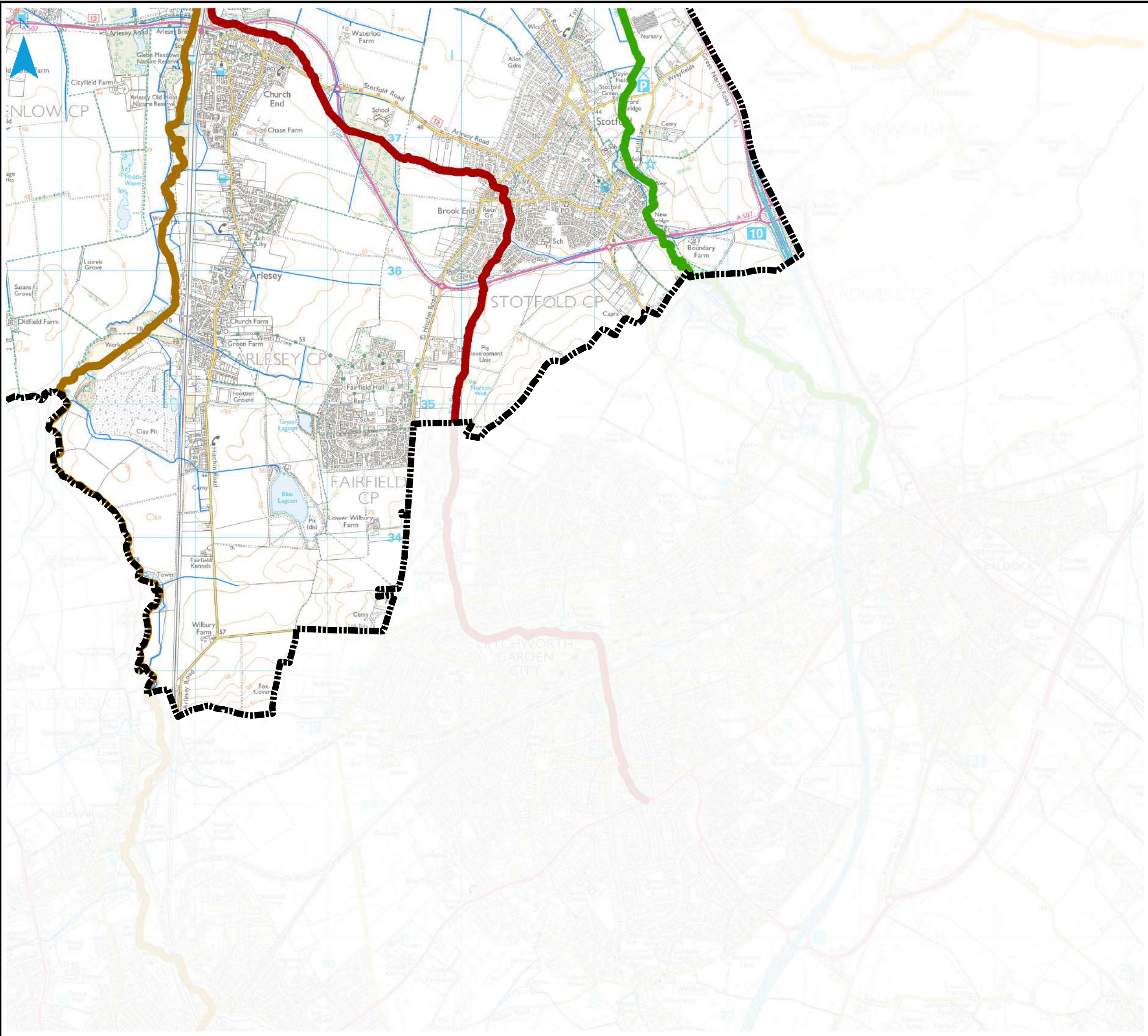
Reproduced from Ordnance Survey mapping with the permission of Ordnance Survey on behalf of the Controller of Her Majesty's Stationary Office. © Crown Copyright and database right 2016. Ordnance Survey 100049029. Central Bedfordshire Council
EA DRN: Special licence - Non-commercial Ref: Z31600

CENTRAL BEDFORDSHIRE COUNCIL SFRA APPENDIX A CBC WATERCOURSES

Sheet No: 10 of 18 Index Number: CBC_SFRA_10

This document is the property of Jeremy Benn Associates Ltd. It shall not be reproduced in whole or in part, nor disclosed to a third party, without the permission of Jeremy Benn Associates Ltd.





Legend

- Central Bedfordshire Council Boundary
- Watercourses
- CBC Key Watercourses**
- Potton Brook
- Cat Ditch
- Clipstone Brook
- Gransden Brook
- Honeydon Brook
- Mill Race
- Ouzel Brook
- Pix Brook
- Potton Brook
- River Flit
- River Gade
- River Great Ouse
- River Hit
- River Hiz
- River Ivel
- River Ivel Navigation
- River Lea or Lee
- River Ouzel
- River Rhee
- River Ver



| REF | Date | Comments |
|-----|---------|------------|
| A | July 16 | Draft v1.0 |
| B | | |
| C | | |

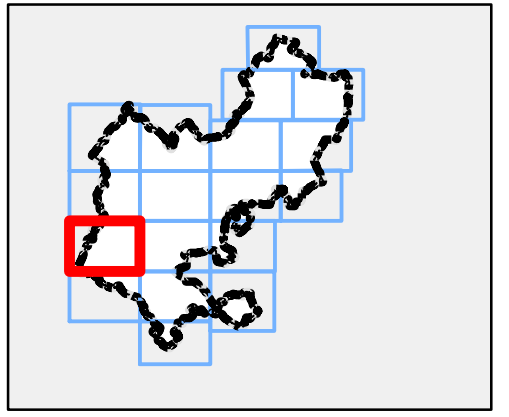
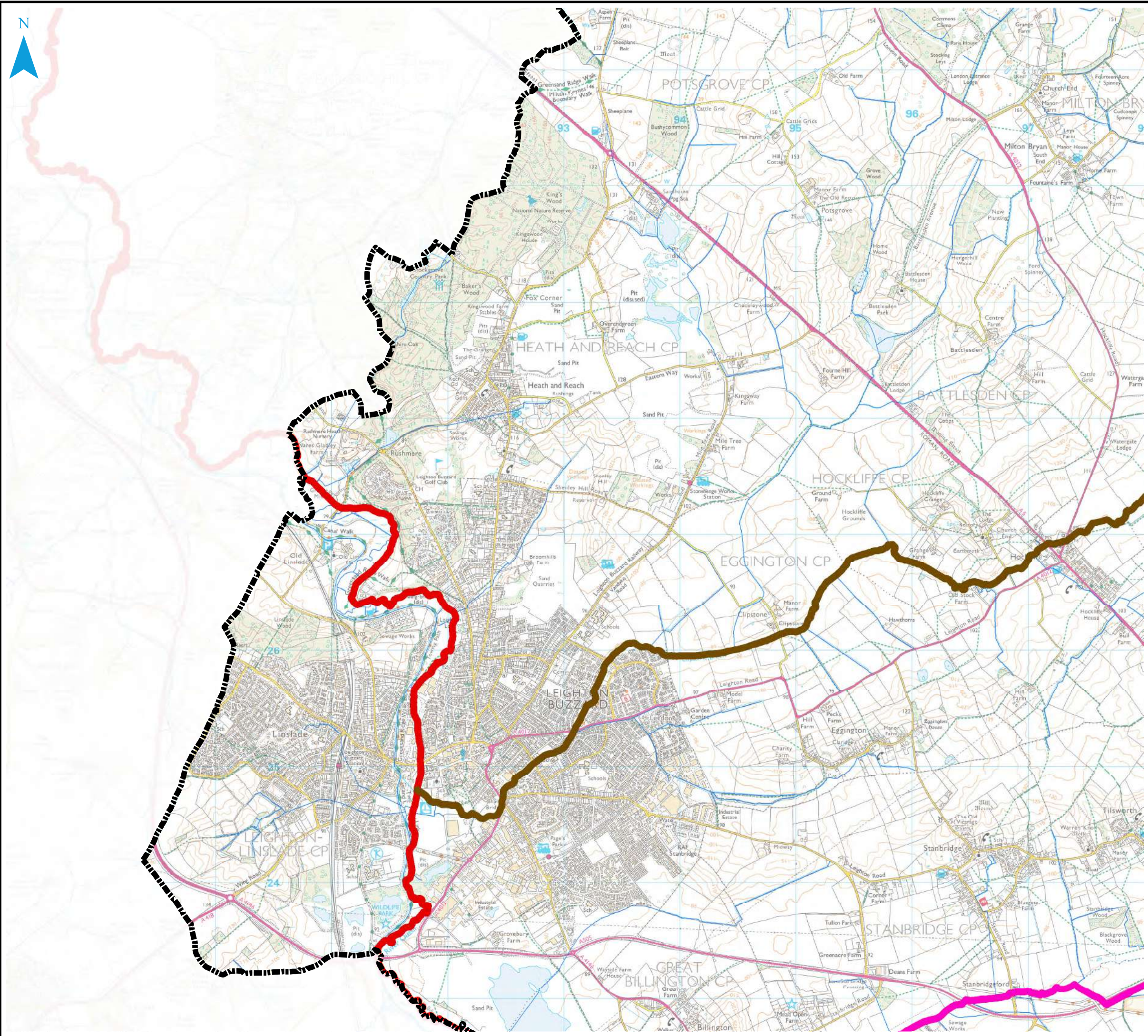
Reproduced from Ordnance Survey mapping with the permission of Ordnance Survey on behalf of the Controller of Her Majesty's Stationary Office. © Crown Copyright and database right 2016. Ordnance Survey 100049029. Central Bedfordshire Council
 EA DRN: Special licence – Non-commercial Ref: Z31600

CENTRAL BEDFORDSHIRE COUNCIL SFRA APPENDIX A CBC WATERCOURSES

Sheet No: 11 of 18 Index Number: CBC_SFRA_11

This document is the property of Jeremy Benn Associates Ltd. It shall not be reproduced in whole or in part, nor disclosed to a third party, without the permission of Jeremy Benn Associates Ltd.





Legend

- Central Bedfordshire Council Boundary
- Watercourses
- CBC Key Watercourses**
- Potton Brook
- Cat Ditch
- Clipstone Brook
- Gransden Brook
- Honeydon Brook
- Mill Race
- Ouzel Brook
- Pix Brook
- Potton Brook
- River Flit
- River Gade
- River Great Ouse
- River Hit
- River Hiz
- River Ivel
- River Ivel Navigation
- River Lea or Lee
- River Ouzel
- River Rhee
- River Ver



| REF | Date | Comments |
|-----|---------|------------|
| A | July 16 | Draft v1.0 |
| B | | |
| C | | |

Reproduced from Ordnance Survey mapping with the permission of Ordnance Survey on behalf of the Controller of Her Majesty's Stationary Office. © Crown Copyright and database right 2016. Ordnance Survey 100049029. Central Bedfordshire Council
 EA DRN: Special licence – Non-commercial Ref: Z31600

CENTRAL BEDFORDSHIRE COUNCIL SFRA APPENDIX A CBC WATERCOURSES

Sheet No: 12 of 18 Index Number: CBC_SFRA_12

This document is the property of Jeremy Benn Associates Ltd. It shall not be reproduced in whole or in part, nor disclosed to a third party, without the permission of Jeremy Benn Associates Ltd.

