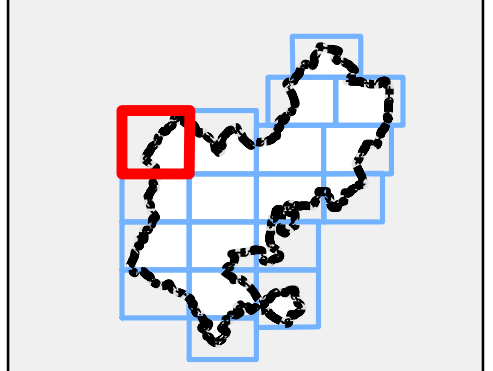


### Notes

Flood Alerts are used to warn people of the possibility of flooding and encourage them to be alert, stay vigilant and make early preparations. It is issued earlier than a flood warning, to give customers advice notice of the possibility of flooding, but before we are fully confident that flooding in Flood Warning Areas is expected.

Flood Warnings warn people of expected flooding and encourage them to take action to protect themselves and their property.

Some areas may be covered by more than one flood warning area as they may be at risk of flooding from more than one watercourse.



### Legend

- Central Bedfordshire Council boundary
- Flood Warning Coverage**
- River Ivel at Beeston and Seddington
- River Ivel at Biggleswade and Holme
- River Ivel at Blunham
- River Ivel at Blunham East
- Clipstone Brook at Leighton Buzzard
- Clipstone Brook at Leighton Buzzard
- River Ivel at Langford Area 1
- River Ivel at Langford Area 2
- River Great Ouse from Great Barford to Roxton
- River Great Ouse from Great Barford to Roxton
- River Great Ouse from Tempsford to Offord
- River Lee at Harpenden
- River Ouzel from Leighton Buzzard to Bletchley
- River Ivel at Sandy and Girtford
- River Flit and Hit at Shefford East
- River Flit at Shefford North
- River Flit and Hit at Shefford and Clifton



REF	Date	Comments
A	July 16	Draft v.1.0
B		
C		

Reproduced from Ordnance Survey mapping with the permission of Ordnance Survey on behalf of the Controller of Her Majesty's Stationary Office. © Crown Copyright and database right 2016. Ordnance Survey 100049029. Central Bedfordshire Council

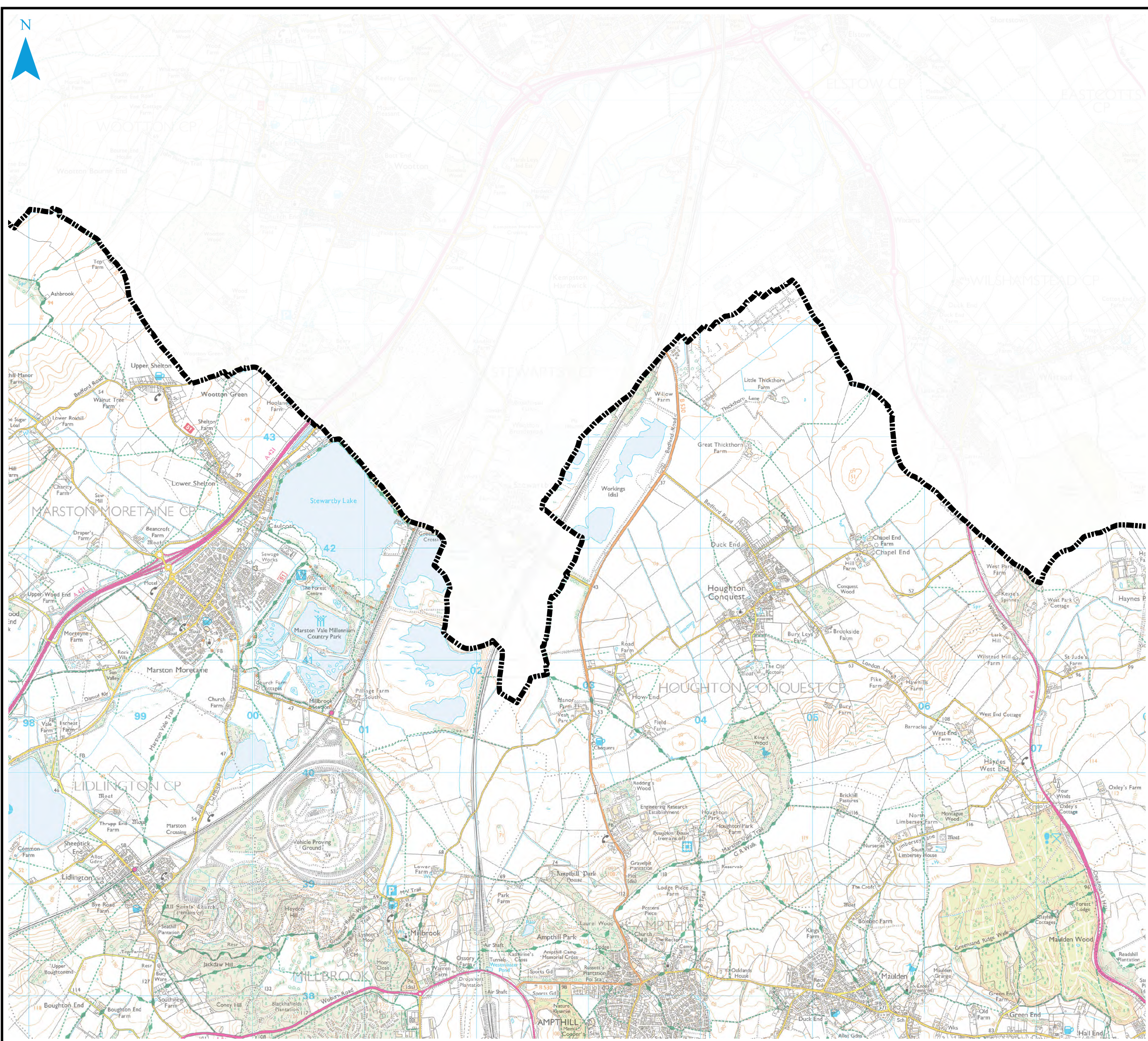
## CENTRAL BEDFORDSHIRE COUNCIL SFRA APPENDIX F FLOOD WARNING COVERAGE

Sheet No: 4 of 18 Index Number: CBC\_SFRA\_4

This document is the property of Jeremy Benn Associates Ltd. It shall not be reproduced in whole or in part, nor disclosed to a third party, without the permission of Jeremy Benn Associates Ltd.





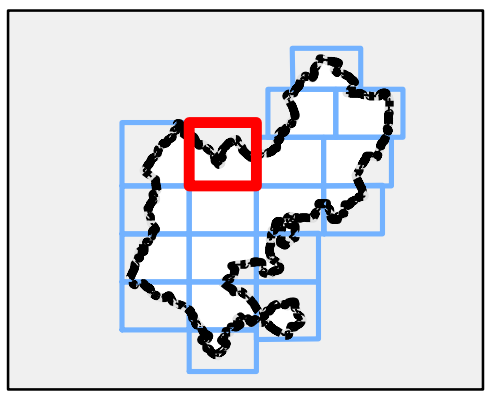


### Notes

Flood Alerts are used to warn people of the possibility of flooding and encourage them to be alert, stay vigilant and make early preparations. It is issued earlier than a flood warning, to give customers advice notice of the possibility of flooding, but before we are fully confident that flooding in Flood Warning Areas is expected.

Flood Warnings warn people of expected flooding and encourage them to take action to protect themselves and their property.

Some areas may be covered by more than one flood warning area as they may be at risk of flooding from more than one watercourse.



### Legend

- Central Bedfordshire Council boundary
- Flood Warning Coverage**
- River Ivel at Beeston and Seddington
- River Ivel at Biggleswade and Holme
- River Ivel at Blunham
- River Ivel at Blunham East
- Clipstone Brook at Leighton Buzzard
- Clipstone Brook at Leighton Buzzard
- River Ivel at Langford Area 1
- River Ivel at Langford Area 2
- River Great Ouse from Great Barford to Roxton
- River Great Ouse from Great Barford to Roxton
- River Great Ouse from Tempsford to Offord
- River Lee at Harpenden
- River Ouzel from Leighton Buzzard to Bletchley
- River Ivel at Sandy and Girtford
- River Flit and Hit at Shefford East
- River Flit at Shefford North
- River Flit and Hit at Shefford and Clifton



REF	Date	Comments
A	July 16	Draft v.1.0
B		
C		

Reproduced from Ordnance Survey mapping with the permission of Ordnance Survey on behalf of the Controller of Her Majesty's Stationary Office. © Crown Copyright and database right 2016. Ordnance Survey 100049029. Central Bedfordshire Council

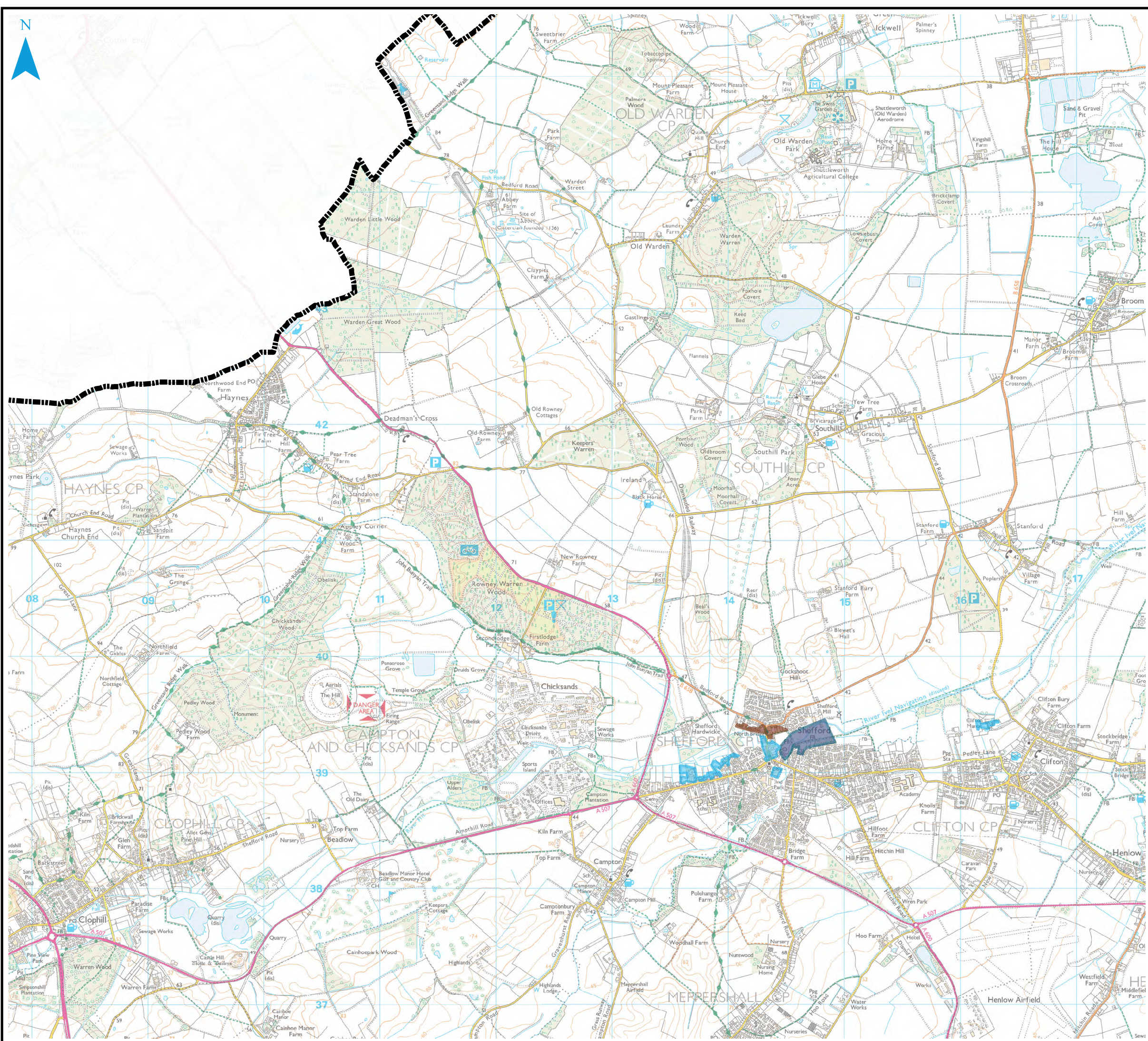
## CENTRAL BEDFORDSHIRE COUNCIL SFRA APPENDIX F FLOOD WARNING COVERAGE

Sheet No: 5 of 18 Index Number: CBC\_SFRA\_5

This document is the property of Jeremy Benn Associates Ltd. It shall not be reproduced in whole or in part, nor disclosed to a third party, without the permission of Jeremy Benn Associates Ltd.





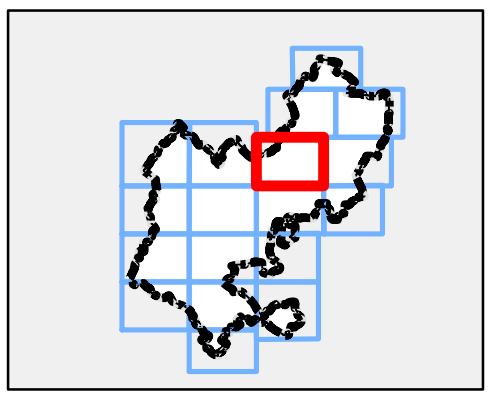


### Notes

Flood Alerts are used to warn people of the possibility of flooding and encourage them to be alert, stay vigilant and make early preparations. It is issued earlier than a flood warning, to give customers advance notice of the possibility of flooding, but before we are fully confident that flooding in Flood Warning Areas is expected.

Flood Warnings warn people of expected flooding and encourage them to take action to protect themselves and their property.

Some areas may be covered by more than one flood warning area as they may be at risk of flooding from more than one watercourse.



### Legend

- Central Bedfordshire Council boundary
- Flood Warning Coverage**
- River Ivel at Beeston and Seddington
- River Ivel at Biggleswade and Holme
- River Ivel at Blunham
- River Ivel at Blunham East
- Clipstone Brook at Leighton Buzzard
- Clipstone Brook at Leighton Buzzard
- River Ivel at Langford Area 1
- River Ivel at Langford Area 2
- River Great Ouse from Great Barford to Roxton
- River Great Ouse from Great Barford to Roxton
- River Great Ouse from Tempsford to Offord
- River Lee at Harpenden
- River Ouzel from Leighton Buzzard to Bletchley
- River Ivel at Sandy and Girtford
- River Flit and Hit at Shefford East
- River Flit at Shefford North
- River Flit and Hit at Shefford and Clifton



REF	Date	Comments
A	July 16	Draft v.1.0
B		
C		

Reproduced from Ordnance Survey mapping with the permission of Ordnance Survey on behalf of the Controller of Her Majesty's Stationary Office. © Crown Copyright and database right 2016. Ordnance Survey 100049029. Central Bedfordshire Council

## CENTRAL BEDFORDSHIRE COUNCIL SFRA APPENDIX F FLOOD WARNING COVERAGE

Sheet No: 6 of 18 Index Number: CBC\_SFRA\_6

This document is the property of Jeremy Benn Associates Ltd. It shall not be reproduced in whole or in part, nor disclosed to a third party, without the permission of Jeremy Benn Associates Ltd.

