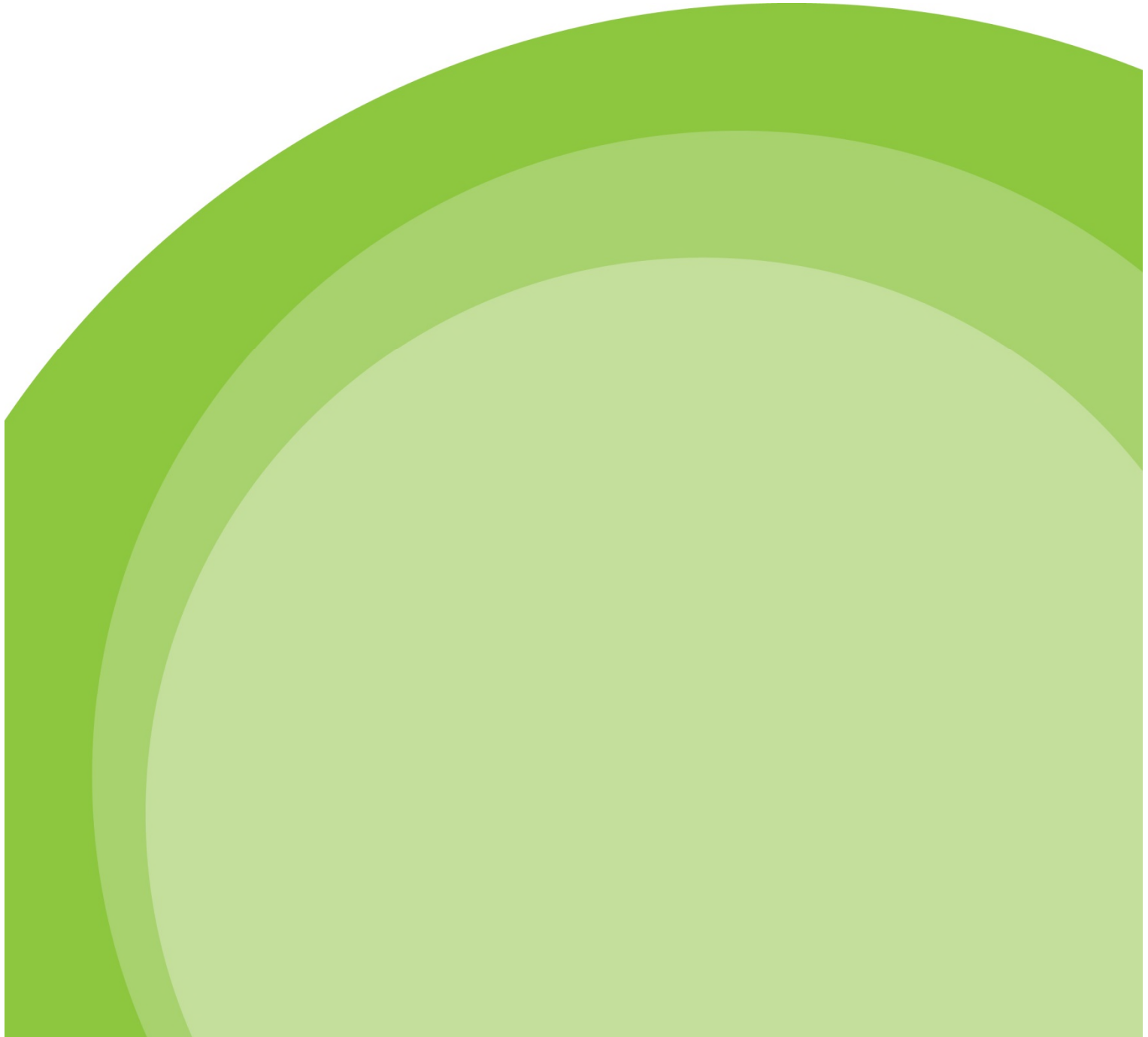


# Water Cycle Study

## Maps 3 & 4

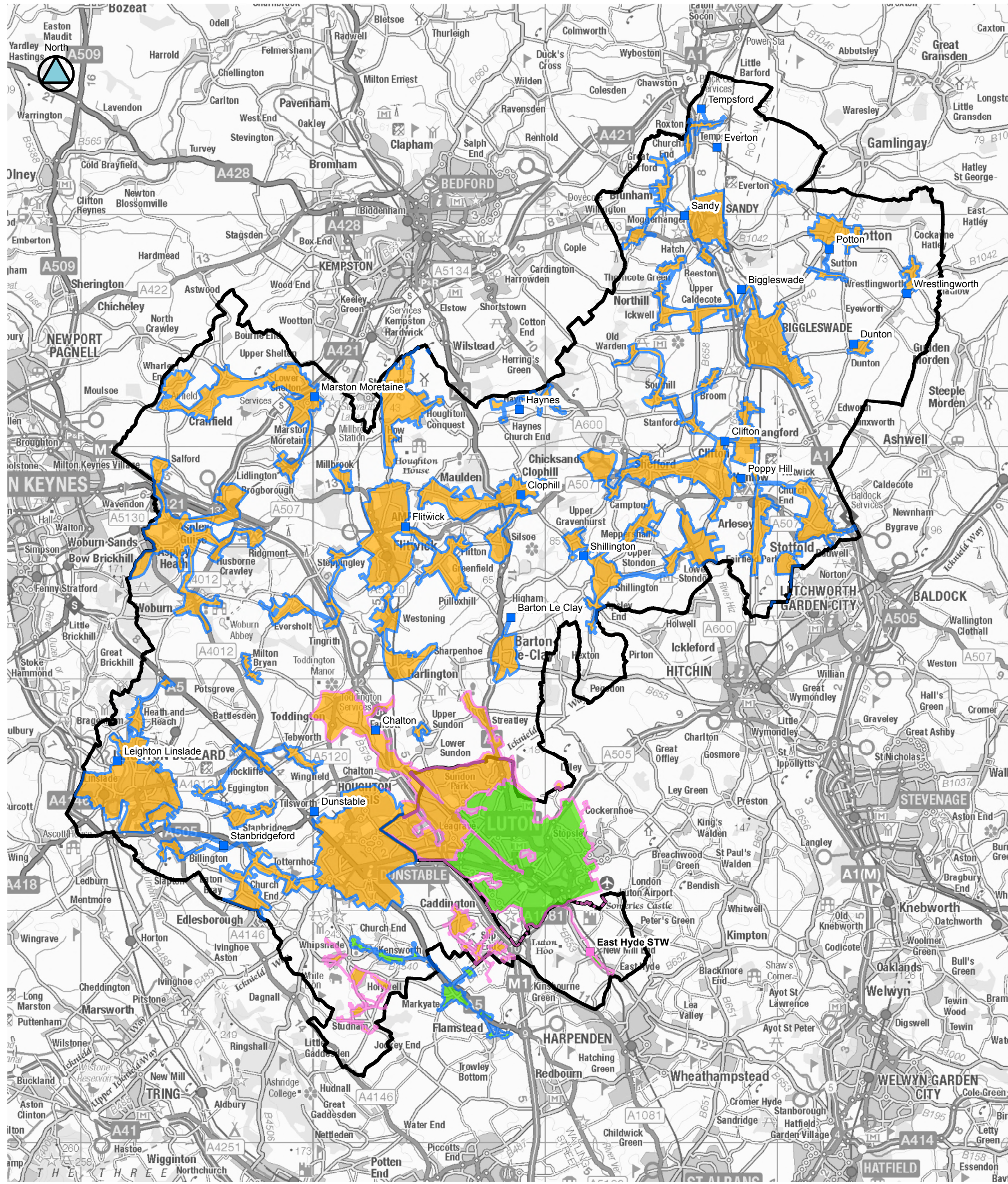
July 2017



Map 3 Sewerage RAG Assessment

Map 4 Wastewater Treatment Headroom RAG Assessment





**LEGEND**

- Sewerage RAG**
- Anglian Water, Amber
  - Anglian Water, Green
  - Thames Water, Amber
  - Thames Water, Green

Central Bedfordshire

**NOTES:**

RAG results have been summarised by WwTW catchment area to provide consistent spatial reporting. See table 10-1 of the stage 1 report for more details.

Note Anglian Water WwTW catchment boundaries were supplied trimmed to the CBC boundary.

Contains OS data © Crown copyright and database right (2017)

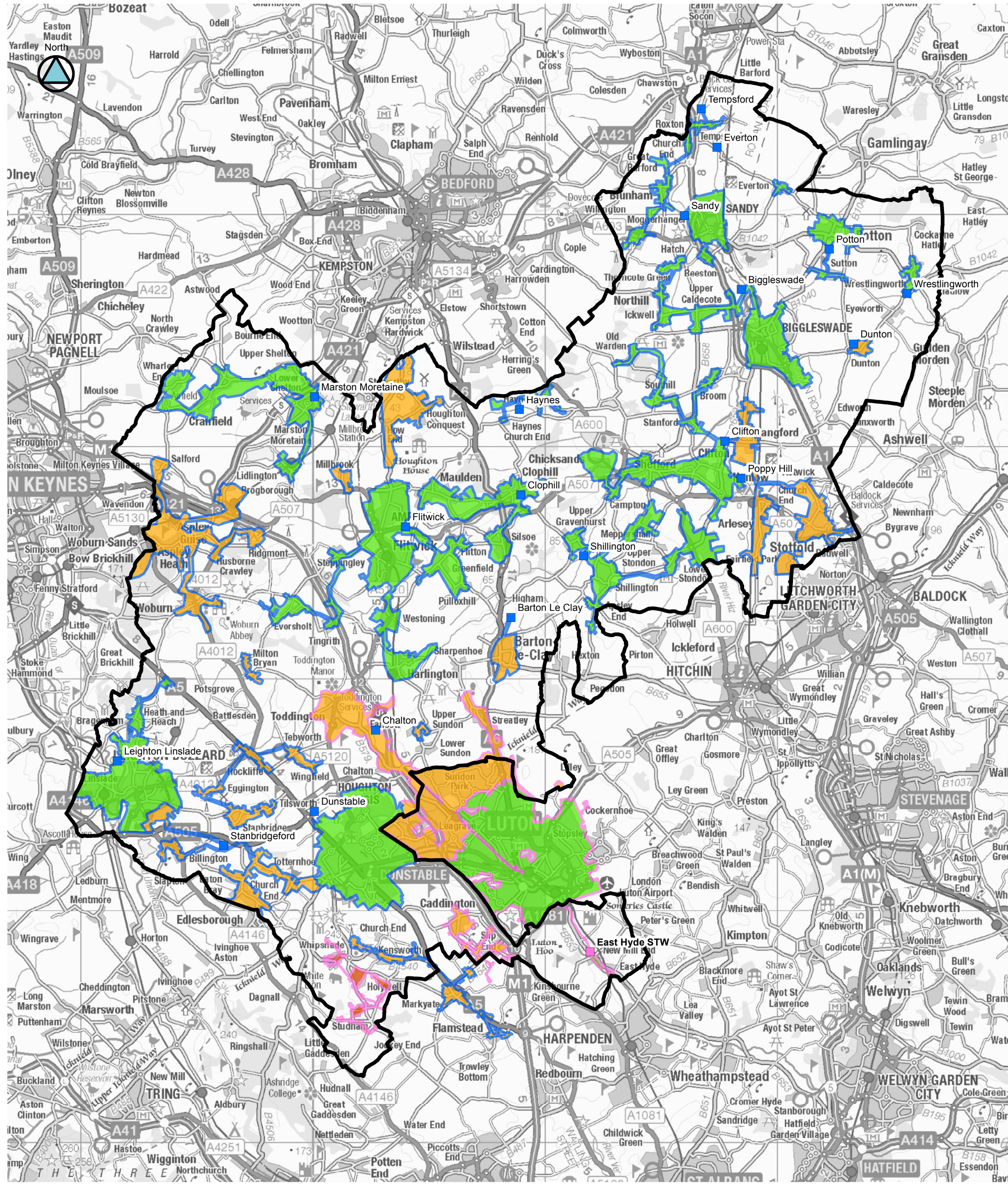


**Water Cycle Study  
Stage 1**

RAG Assessment  
Map 3: Sewerage

Scale: 1:150,000





**LEGEND**

-  Central Bedfordshire
- WwTW Headroom RAG**
-  Anglian Water, Amber
-  Anglian Water, Green
-  Thames Water, Red
-  Thames Water, Amber
-  Thames Water, Green

**NOTES:**

RAG results have been summarised by WwTW catchment area to provide consistent spatial reporting. See table 10-1 of the stage 1 report for more details.

Note Anglian Water WwTW catchment boundaries were supplied trimmed to the CBC boundary.

Contains OS data © Crown copyright and database right (2017)



**Water Cycle Study  
Stage 1**

RAG Assessment  
Map 4: Wastewater Treatment