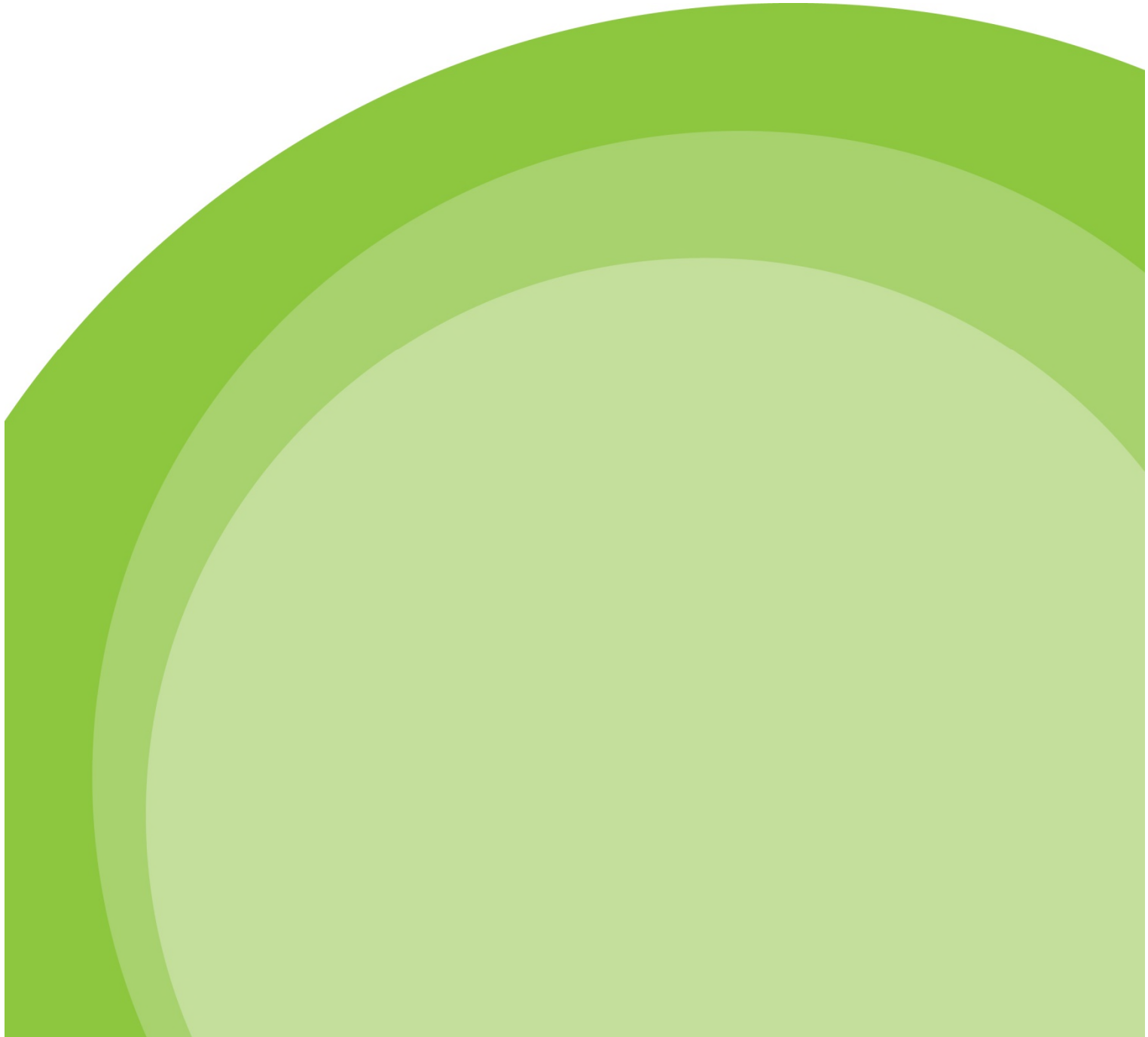




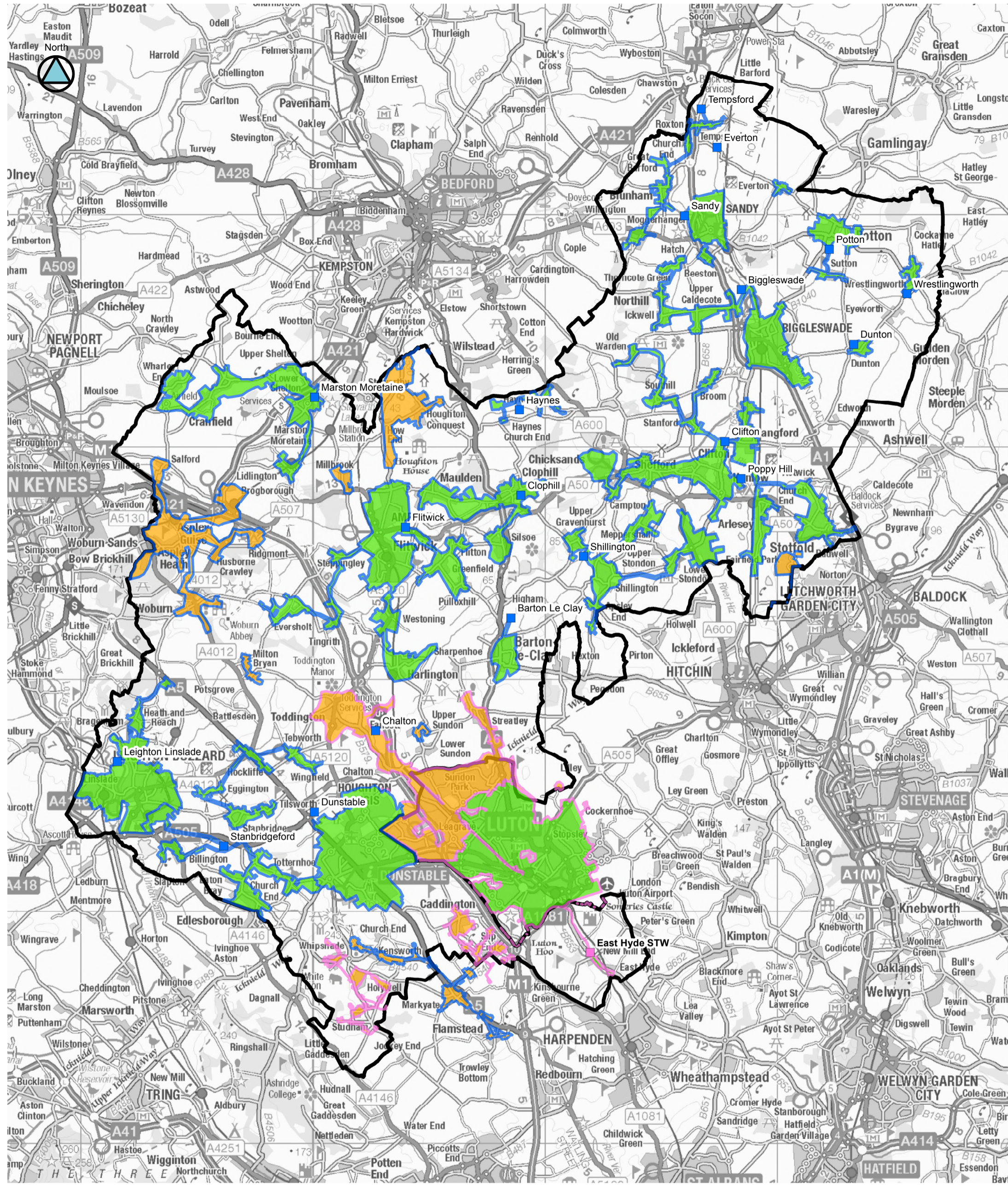
Water Cycle Study Maps 5 & 6

July 2017








Map 5 Water Quality RAG Assessment

Map 6 Wastewater Treatment Flood Risk RAG Assessment



LEGEND

-  Central Bedfordshire
- WwTW Flood Risk RAG**
-  Anglian Water, Amber
-  Anglian Water, Green
-  Thames Water, Amber
-  Thames Water, Green

NOTES:

RAG results have been summarised by WwTW catchment area to provide consistent spatial reporting. See table 10-1 of the stage 1 report for more details.

Note Anglian Water WwTW catchment boundaries were supplied trimmed to the CBC boundary.

Contains OS data © Crown copyright and database right (2017)



**Water Cycle Study
Stage 1**

RAG Assessment
Map 6: WwTW Flood Risk