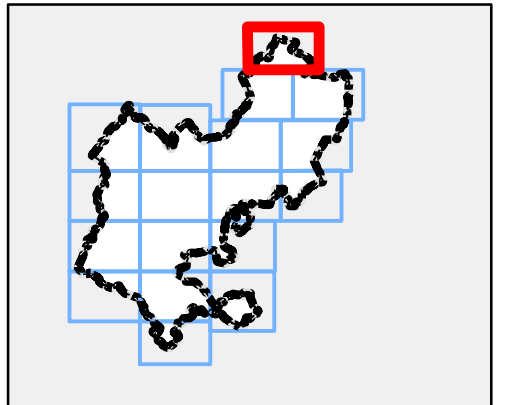
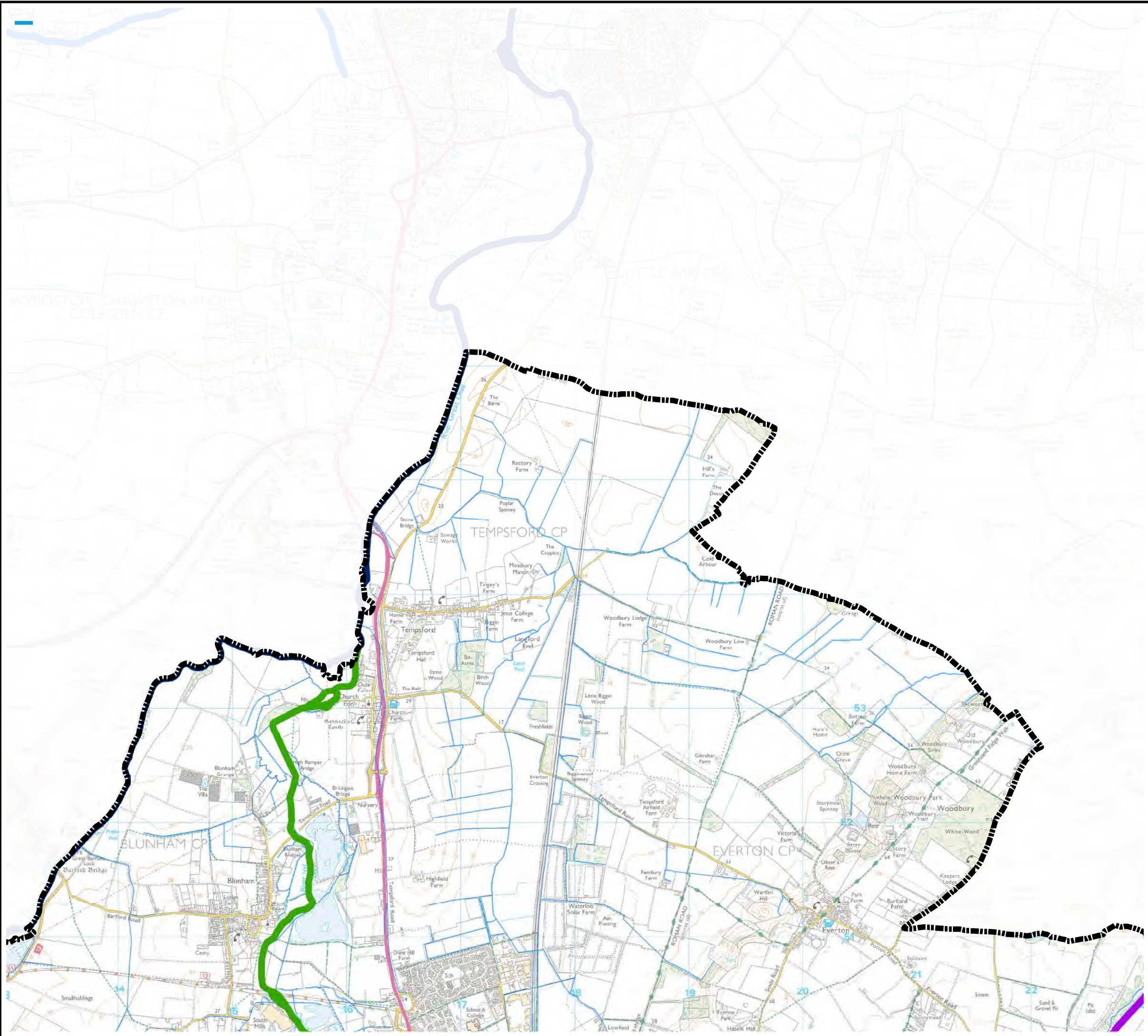


Central Bedfordshire Council Local Plan (2015-2035)

Level 1 Strategic Flood Risk Assessment

Appendix A: Water Courses

(July 2017)



Legend

- Central Bedfordshire Council Boundary**
- Watercourses
- CBC Key Watercourses**
- Potton Brook
- Cat Ditch
- Clipstone Brook
- Gransden Brook
- Honeydon Brook
- Mill Race
- Ouzel Brook
- Pix Brook
- Potton Brook
- River Flit
- River Gade
- River Great Ouse
- River Hit
- River Hiz
- River Ivel
- River Ivel Navigation
- River Lea or Lee
- River Ouzel
- River Rhee
- River Ver



REF	Date	Comments
A	July 16	Draft v1.0
B		
C		

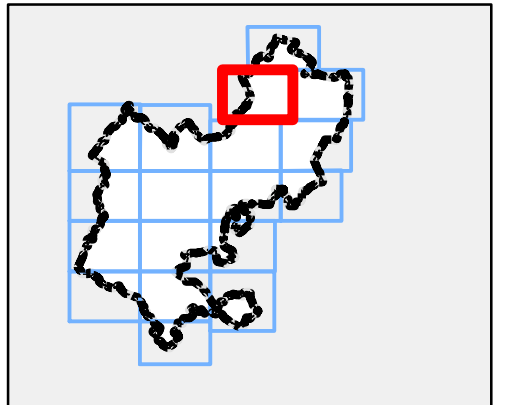
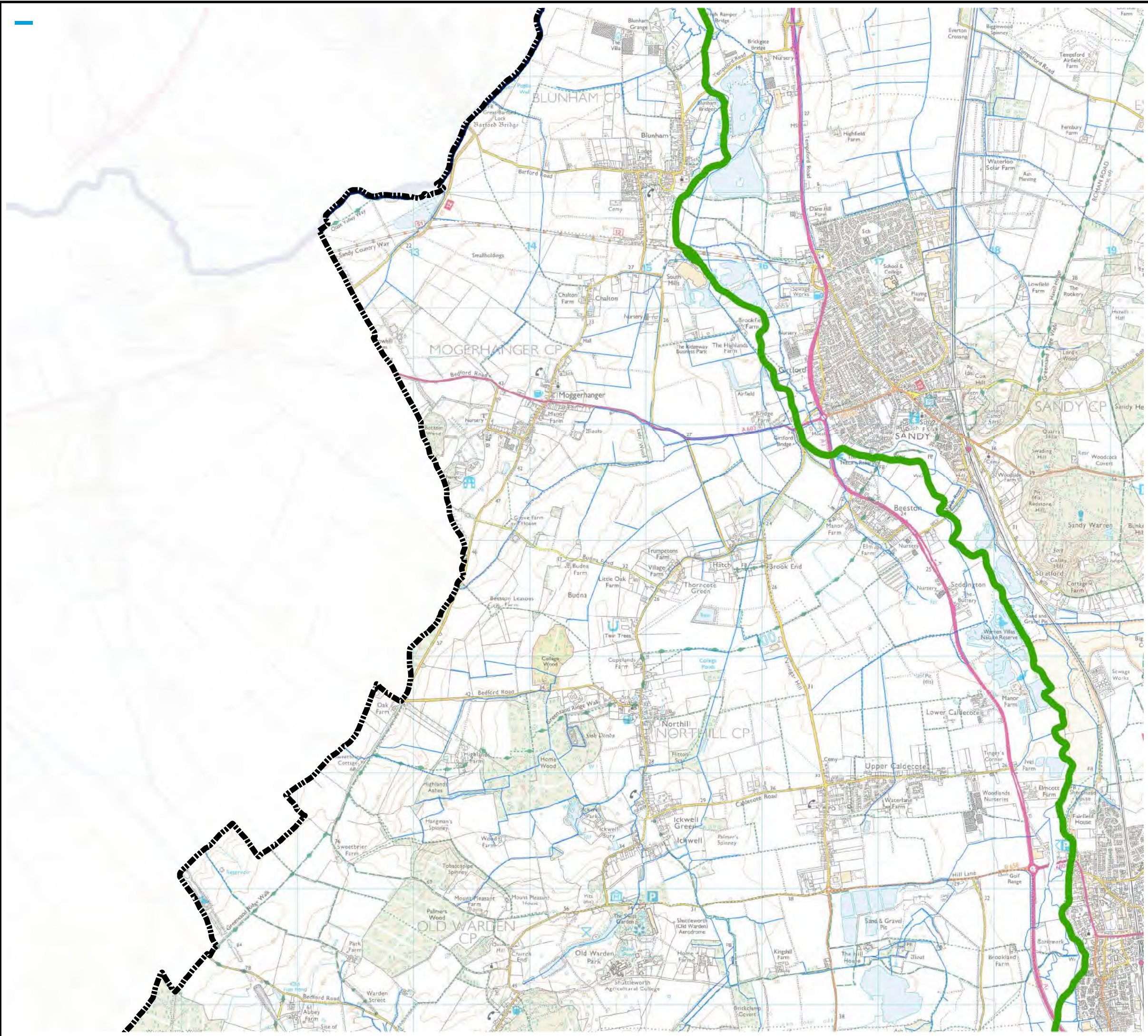
Reproduced from Ordnance Survey mapping with the permission of Ordnance Survey on behalf of the Controller of Her Majesty's Stationary Office. © Crown Copyright and database right 2016. Ordnance Survey 100049029. Central Bedfordshire Council
 EA DRN: Special licence – Non-commercial Ref: Z31600

CENTRAL BEDFORDSHIRE COUNCIL SFRA APPENDIX A CBC WATERCOURSES

Sheet No: 1 of 18 Index Number: CBC_SFRA_1

This document is the property of Jeremy Benn Associates Ltd. It shall not be reproduced in whole or in part, nor disclosed to a third party, without the permission of Jeremy Benn Associates Ltd.





Legend

- Central Bedfordshire Council Boundary
- Watercourses
- CBC Key Watercourses**
- Potton Brook
- Cat Ditch
- Clipstone Brook
- Gransden Brook
- Honeydon Brook
- Mill Race
- Ouzel Brook
- Pix Brook
- Potton Brook
- River Flit
- River Gade
- River Great Ouse
- River Hit
- River Hiz
- River Ivel
- River Ivel Navigation
- River Lea or Lee
- River Ouzel
- River Rhee
- River Ver



REF	Date	Comments
A	July 16	Draft v1.0
B		
C		

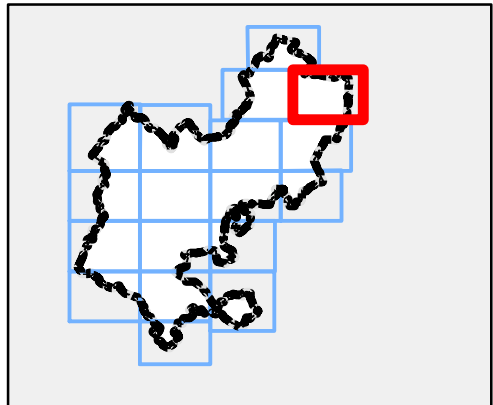
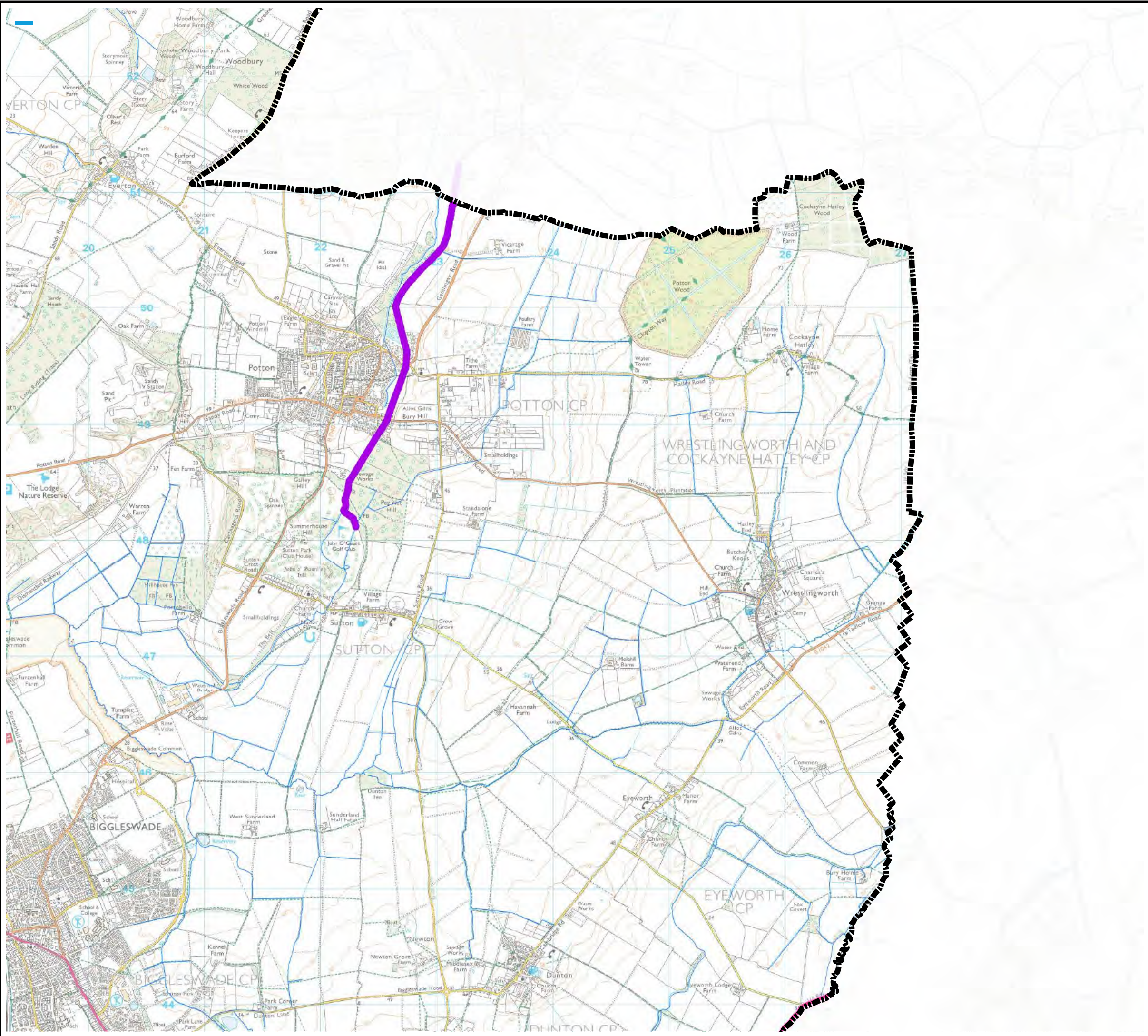
Reproduced from Ordnance Survey mapping with the permission of Ordnance Survey on behalf of the Controller of Her Majesty's Stationary Office. © Crown Copyright and database right 2016. Ordnance Survey 100049029. Central Bedfordshire Council
 EA DRN: Special licence - Non-commercial Ref: Z31600

CENTRAL BEDFORDSHIRE COUNCIL SFRA APPENDIX A CBC WATERCOURSES

Sheet No: 2 of 18 Index Number: CBC_SFRA_2

This document is the property of Jeremy Benn Associates Ltd. It shall not be reproduced in whole or in part, nor disclosed to a third party, without the permission of Jeremy Benn Associates Ltd.





Legend

- Central Bedfordshire Council Boundary
- Watercourses
- CBC Key Watercourses**
- Potton Brook
- Cat Ditch
- Clipstone Brook
- Gransden Brook
- Honeydon Brook
- Mill Race
- Ouzel Brook
- Pix Brook
- Potton Brook
- River Flit
- River Gade
- River Great Ouse
- River Hit
- River Hiz
- River Ivel
- River Ivel Navigation
- River Lea or Lee
- River Ouzel
- River Rhee
- River Ver



REF	Date	Comments
A	July 16	Draft v1.0
B		
C		

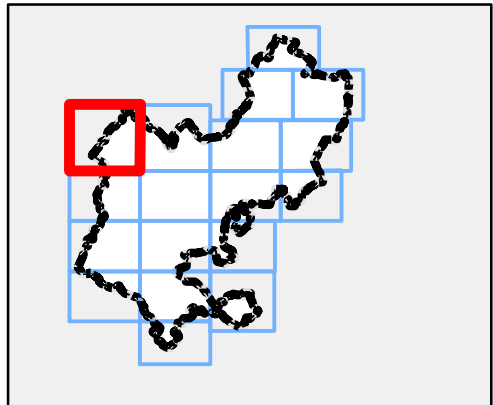
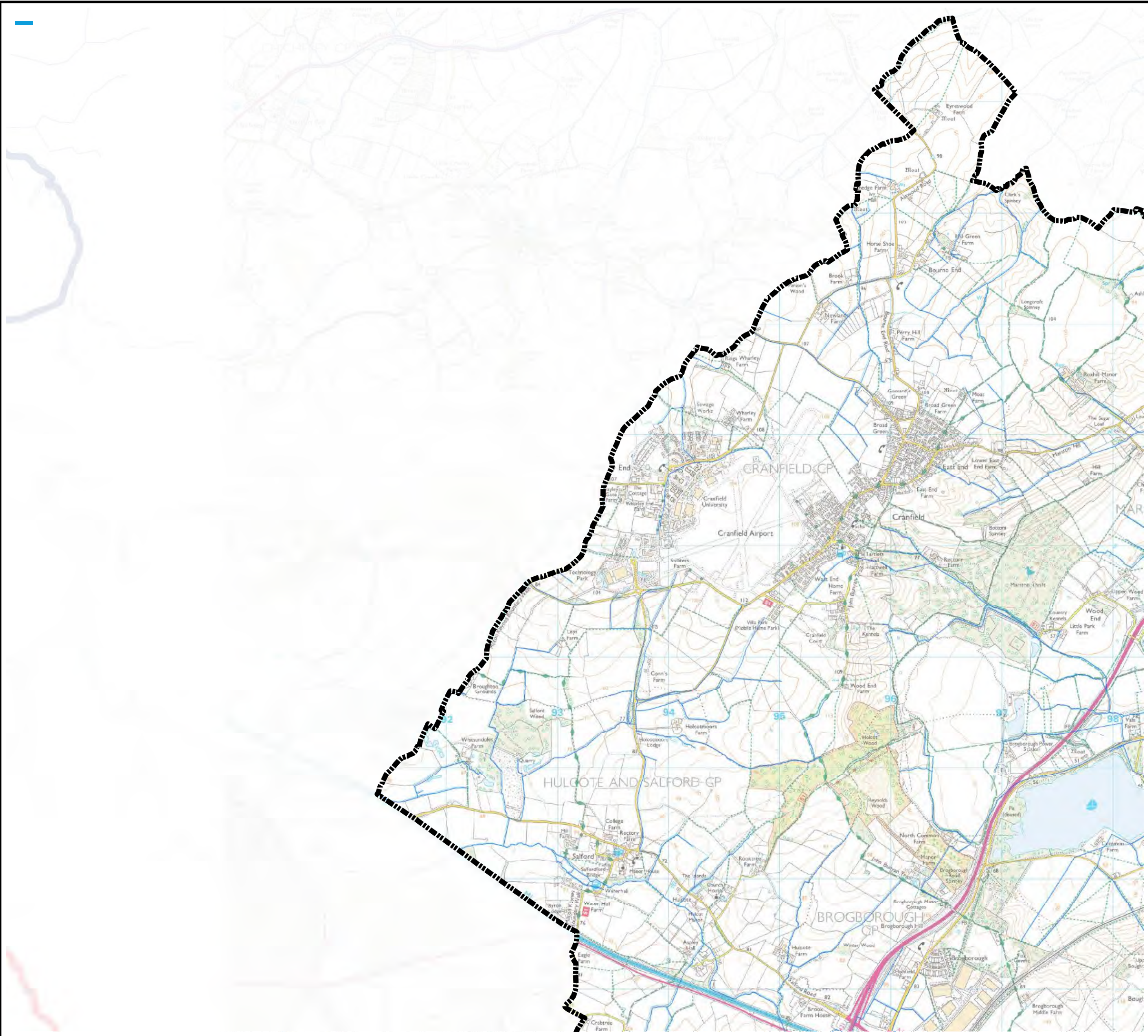
Reproduced from Ordnance Survey mapping with the permission of Ordnance Survey on behalf of the Controller of Her Majesty's Stationary Office. © Crown Copyright and database right 2016. Ordnance Survey 100049029.
 Central Bedfordshire Council
 EA DRN: Special licence - Non-commercial Ref: Z31600

CENTRAL BEDFORDSHIRE COUNCIL SFRA APPENDIX A CBC WATERCOURSES

Sheet No: 3 of 18 Index Number: CBC_SFRA_3

This document is the property of Jeremy Benn Associates Ltd. It shall not be reproduced in whole or in part, nor disclosed to a third party, without the permission of Jeremy Benn Associates Ltd.





Legend

-  Central Bedfordshire Council Boundary
-  Watercourses



REF	Date	Comments
A	July 16	Draft v1.0
B		
C		

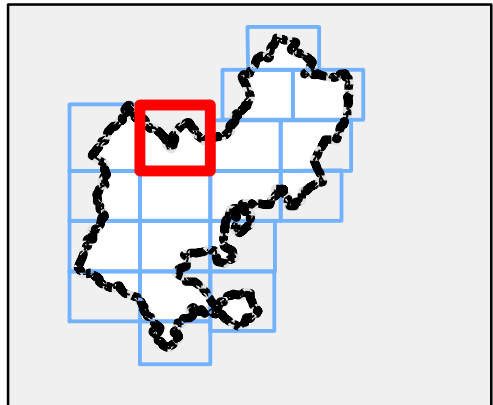
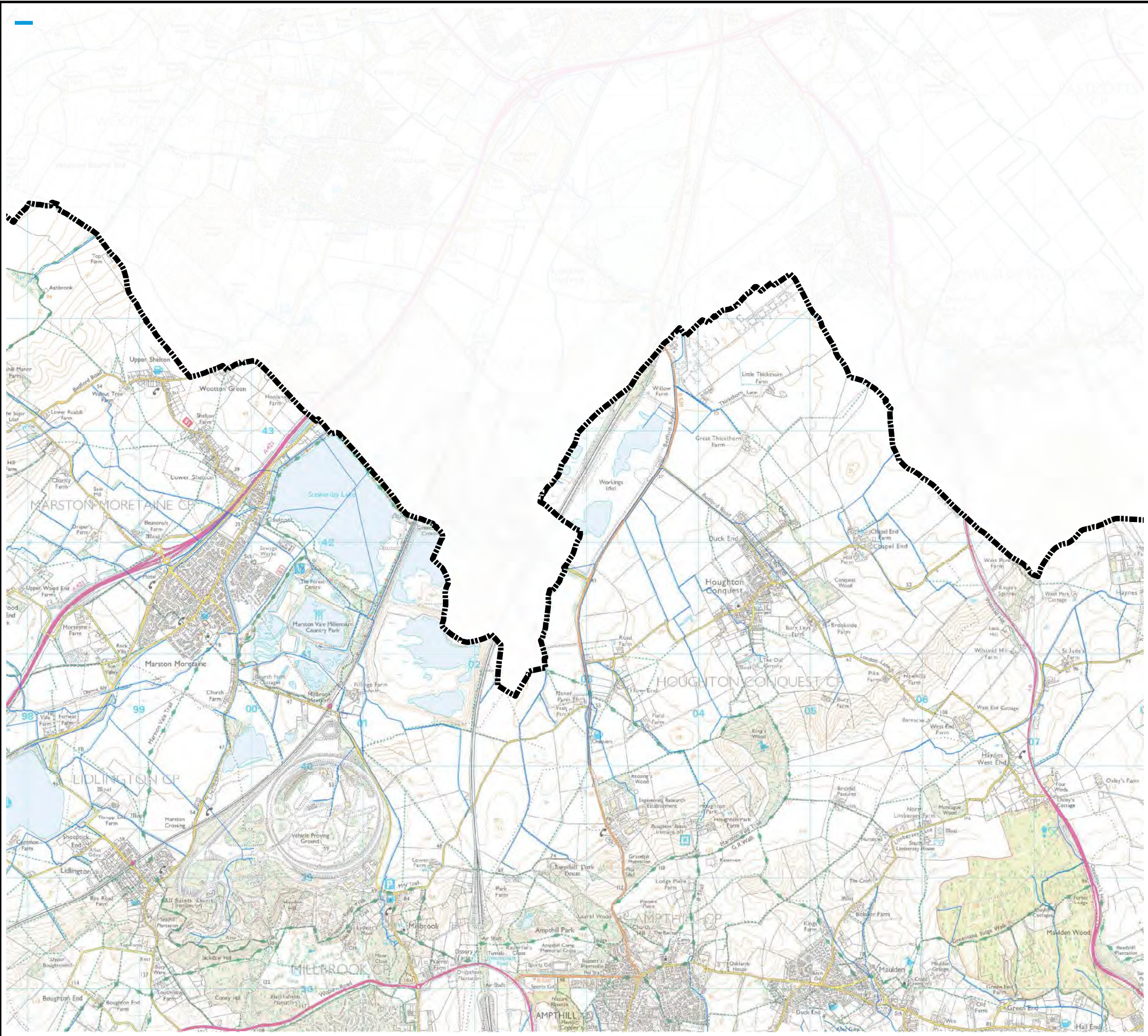
Reproduced from Ordnance Survey mapping with the permission of Ordnance Survey on behalf of the Controller of Her Majesty's Stationary Office. © Crown Copyright and database right 2016. Ordnance Survey 100049029. Central Bedfordshire Council
 EA DRN: Special licence – Non-commercial Ref: Z31600

CENTRAL BEDFORDSHIRE COUNCIL SFRA APPENDIX A CBC WATERCOURSES

Sheet No: 4 of 18 Index Number: CBC_SFRA_4

This document is the property of Jeremy Benn Associates Ltd. It shall not be reproduced in whole or in part, nor disclosed to a third party, without the permission of Jeremy Benn Associates Ltd.





Legend

-  Central Bedfordshire Council Boundary
-  Watercourses



REF	Date	Comments
A	July 16	Draft v1.0
B		
C		

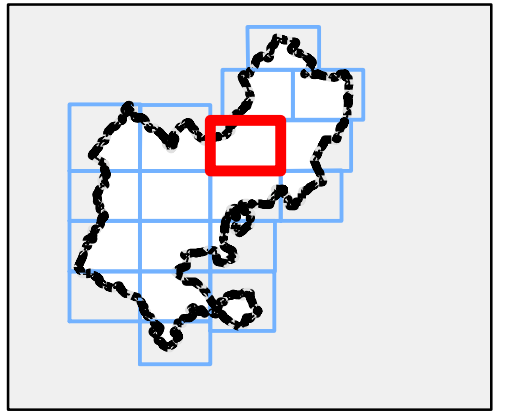
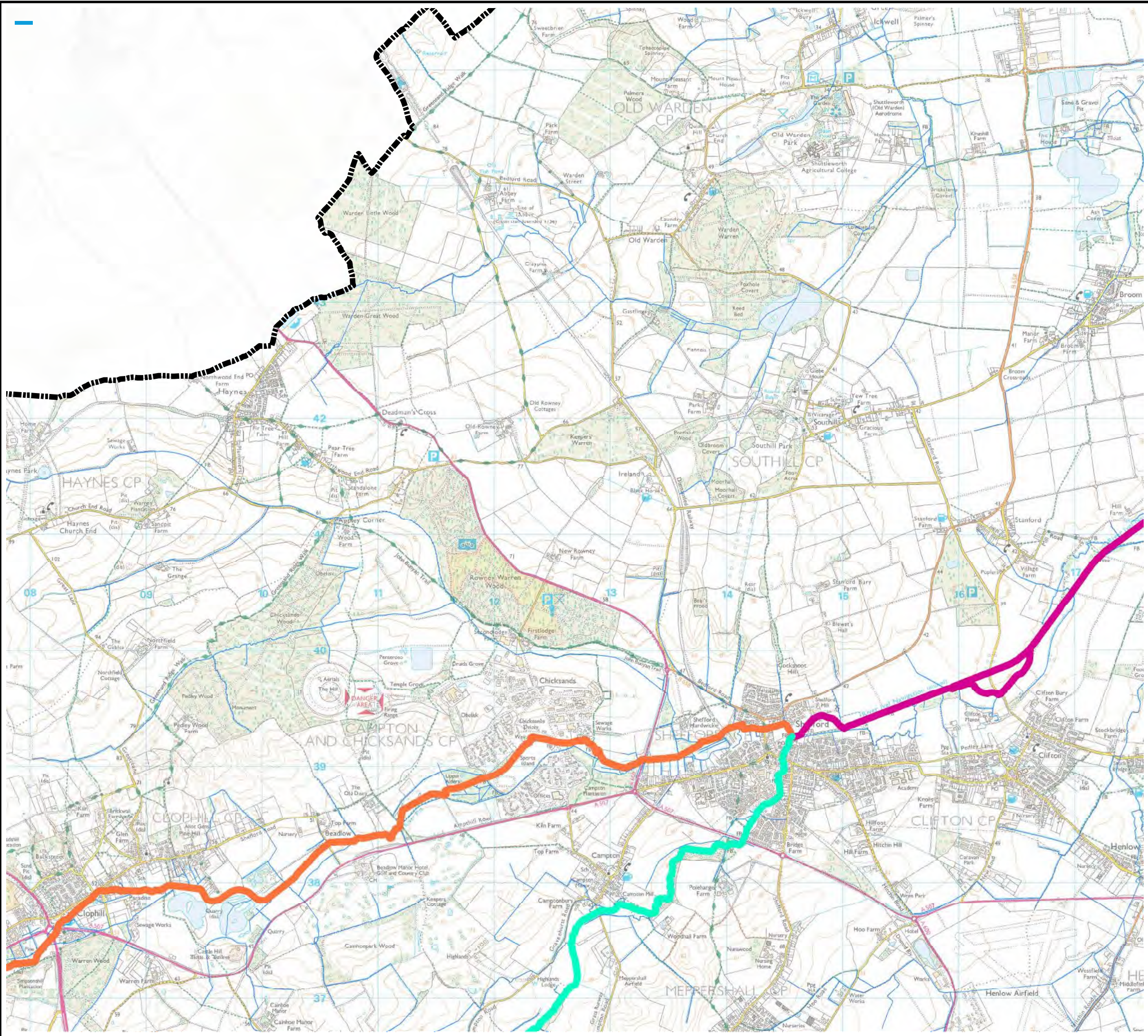
Reproduced from Ordnance Survey mapping with the permission of Ordnance Survey on behalf of the Controller of Her Majesty's Stationary Office. © Crown Copyright and database right 2016. Ordnance Survey 100049029. Central Bedfordshire Council
 EA DRN: Special licence – Non-commercial Ref: Z31600

CENTRAL BEDFORDSHIRE COUNCIL SFRA APPENDIX A CBC WATERCOURSES

Sheet No: 5 of 18 Index Number: CBC_SFRA_5

This document is the property of Jeremy Benn Associates Ltd. It shall not be reproduced in whole or in part, nor disclosed to a third party, without the permission of Jeremy Benn Associates Ltd.





Legend

- Central Bedfordshire Council Boundary
- Watercourses
- CBC Key Watercourses**
- Potton Brook
- Cat Ditch
- Clipstone Brook
- Gransden Brook
- Honeydon Brook
- Mill Race
- Ouzel Brook
- Pix Brook
- Potton Brook
- River Flit
- River Gade
- River Great Ouse
- River Hit
- River Hiz
- River Ivel
- River Ivel Navigation
- River Lea or Lee
- River Ouzel
- River Rhee
- River Ver



REF	Date	Comments
A	July 16	Draft v1.0
B		
C		

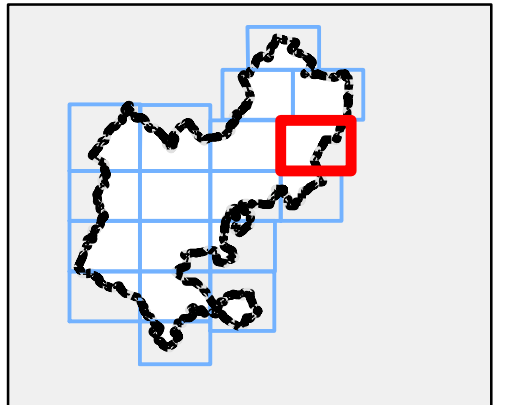
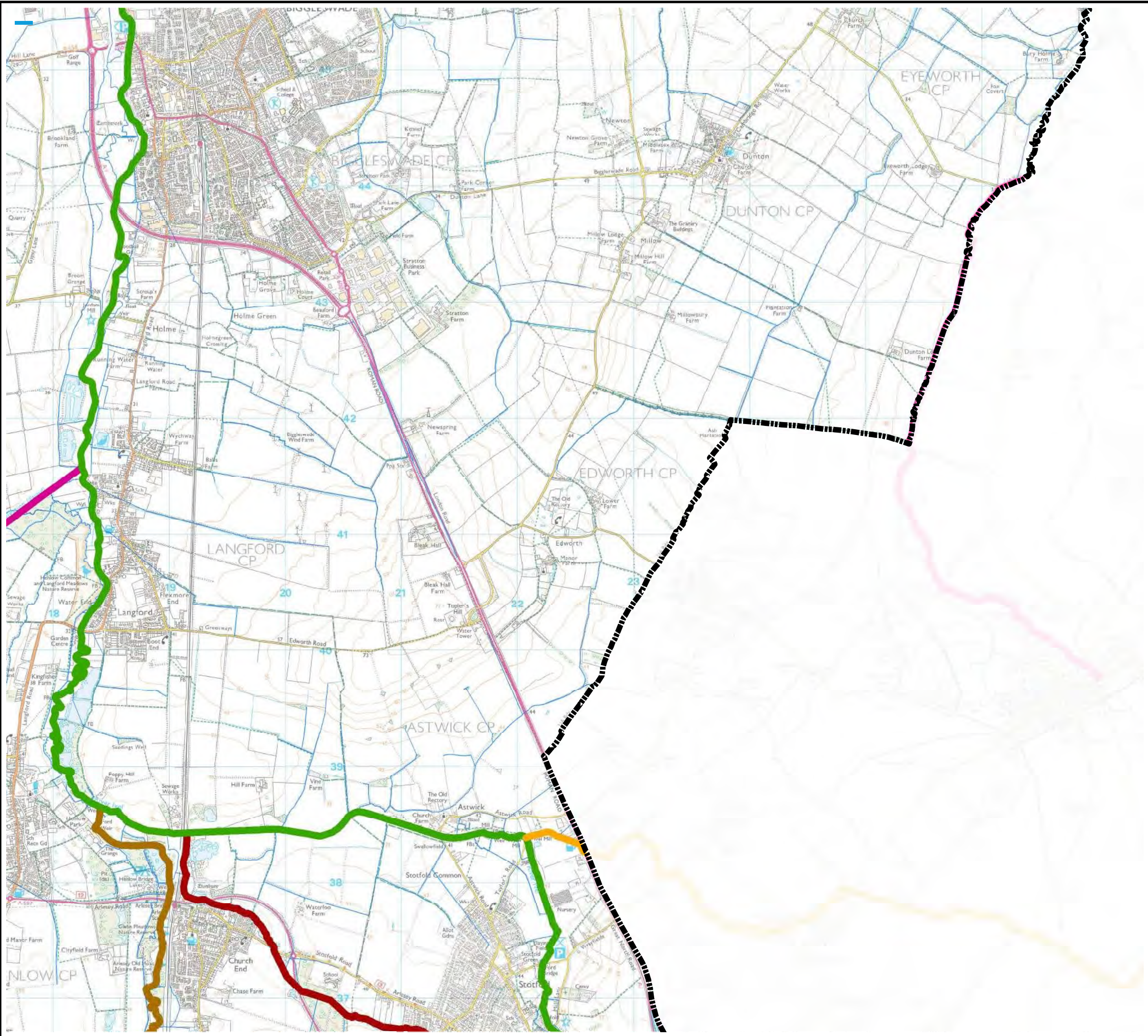
Reproduced from Ordnance Survey mapping with the permission of Ordnance Survey on behalf of the Controller of Her Majesty's Stationary Office. © Crown Copyright and database right 2016. Ordnance Survey 100049029. Central Bedfordshire Council
 EA DRN: Special licence - Non-commercial Ref: Z31600

CENTRAL BEDFORDSHIRE COUNCIL SFRA APPENDIX A CBC WATERCOURSES

Sheet No: 6 of 18 Index Number: CBC_SFRA_6

This document is the property of Jeremy Benn Associates Ltd. It shall not be reproduced in whole or in part, nor disclosed to a third party, without the permission of Jeremy Benn Associates Ltd.





Legend

-  Central Bedfordshire Council Boundary
-  Watercourses
- CBC Key Watercourses**
-  Potton Brook
-  Cat Ditch
-  Clipstone Brook
-  Gransden Brook
-  Honeydon Brook
-  Mill Race
-  Ouzel Brook
-  Pix Brook
-  Potton Brook
-  River Flit
-  River Gade
-  River Great Ouse
-  River Hit
-  River Hiz
-  River Ivel
-  River Ivel Navigation
-  River Lea or Lee
-  River Ouzel
-  River Rhee
-  River Ver



REF	Date	Comments
A	July 16	Draft v1.0
B		
C		

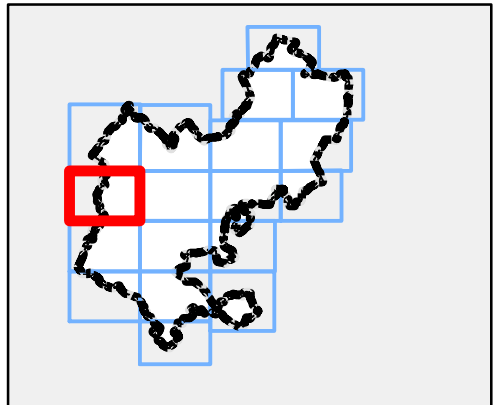
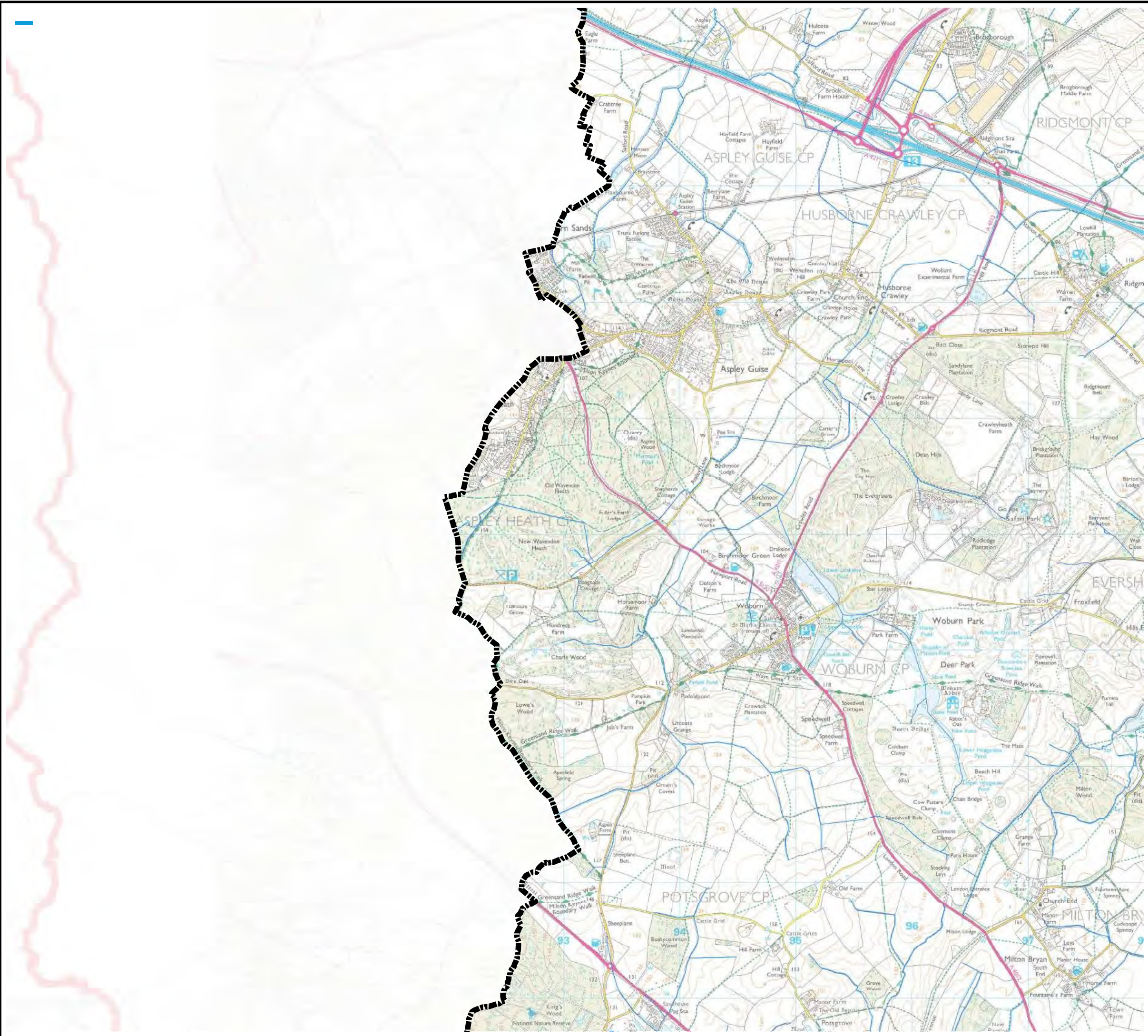
Reproduced from Ordnance Survey mapping with the permission of Ordnance Survey on behalf of the Controller of Her Majesty's Stationary Office. © Crown Copyright and database right 2016. Ordnance Survey 100049029. Central Bedfordshire Council
 EA DRN: Special licence - Non-commercial Ref: Z31600

CENTRAL BEDFORDSHIRE COUNCIL SFRA APPENDIX A CBC WATERCOURSES

Sheet No: 7 of 18 Index Number: CBC_SFRA_7

This document is the property of Jeremy Benn Associates Ltd. It shall not be reproduced in whole or in part, nor disclosed to a third party, without the permission of Jeremy Benn Associates Ltd.





Legend

- Central Bedfordshire Council Boundary
- Watercourses



REF	Date	Comments
A	July 16	Draft v1.0
B		
C		

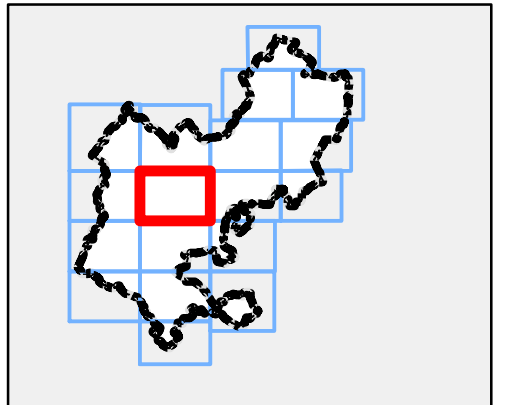
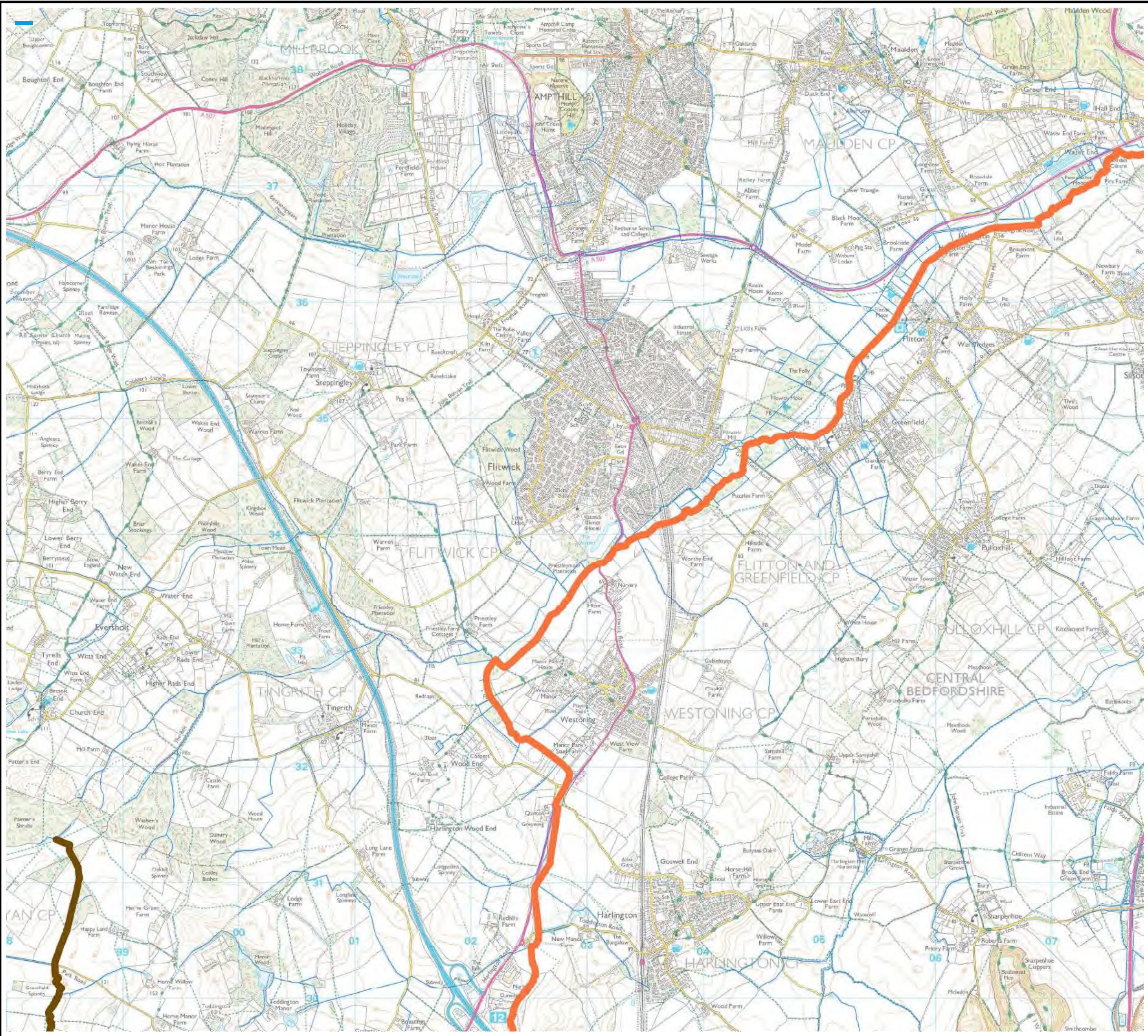
Reproduced from Ordnance Survey mapping with the permission of Ordnance Survey on behalf of the Controller of Her Majesty's Stationary Office. © Crown Copyright and database right 2016. Ordnance Survey 100049029. Central Bedfordshire Council
 EA DRN: Special licence – Non-commercial Ref: Z31600

CENTRAL BEDFORDSHIRE COUNCIL SFRA APPENDIX A CBC WATERCOURSES

Sheet No: 8 of 18 Index Number: CBC_SFRA_8

This document is the property of Jeremy Benn Associates Ltd. It shall not be reproduced in whole or in part, nor disclosed to a third party, without the permission of Jeremy Benn Associates Ltd.





Legend

- Central Bedfordshire Council Boundary
- Watercourses
- CBC Key Watercourses**
- Potton Brook
- Cat Ditch
- Clipstone Brook
- Gransden Brook
- Honeydon Brook
- Mill Race
- Ouzel Brook
- Pix Brook
- Potton Brook
- River Flit
- River Gade
- River Great Ouse
- River Hit
- River Hiz
- River Ivel
- River Ivel Navigation
- River Lea or Lee
- River Ouzel
- River Rhee
- River Ver



REF	Date	Comments
A	July 16	Draft v1.0
B		
C		

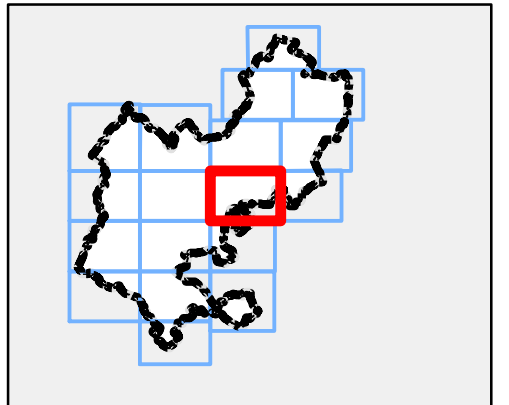
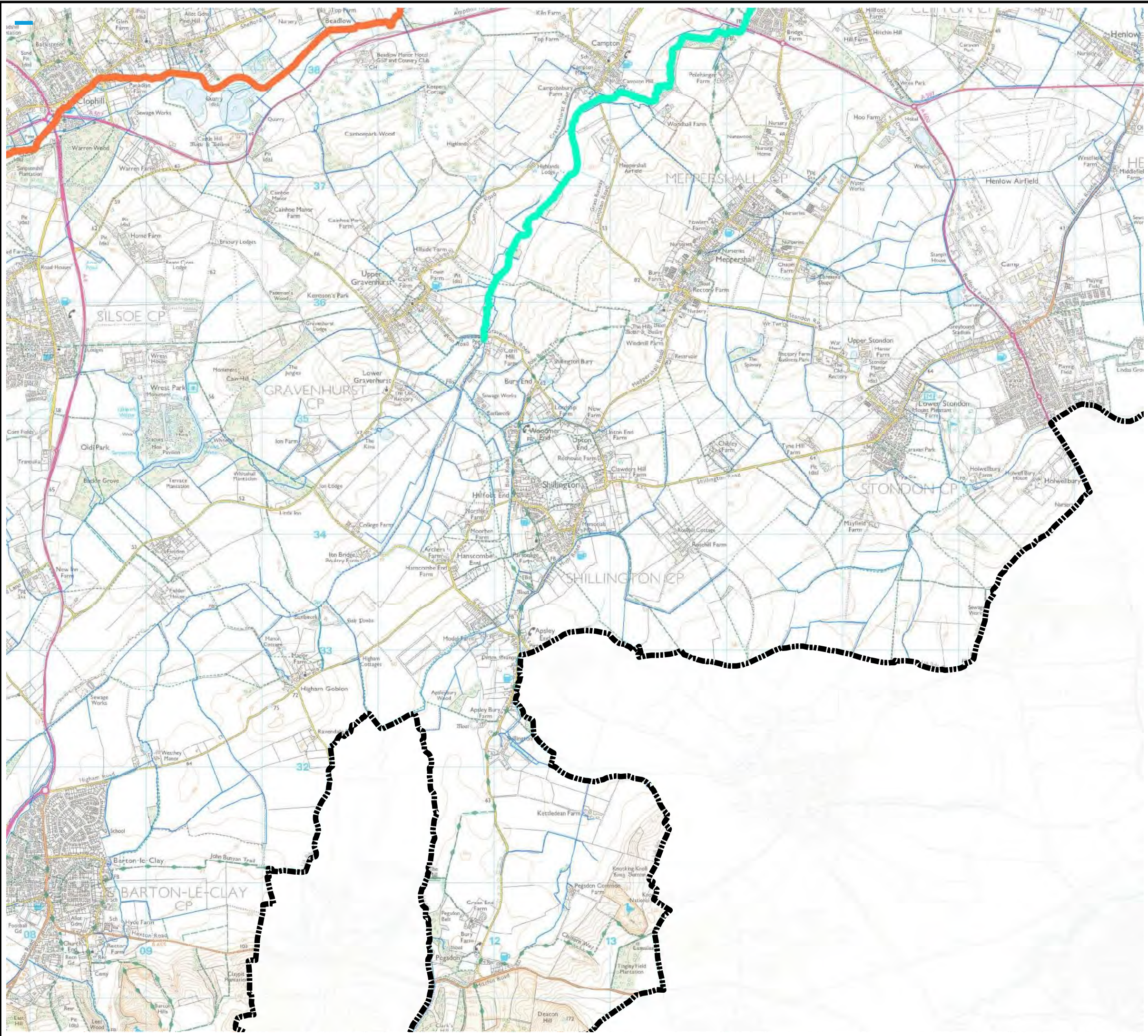
Reproduced from Ordnance Survey mapping with the permission of Ordnance Survey on behalf of the Controller of Her Majesty's Stationary Office. © Crown Copyright and database right 2016. Ordnance Survey 100049029. Central Bedfordshire Council
 EA DRN: Special licence – Non-commercial Ref: Z31600

CENTRAL BEDFORDSHIRE COUNCIL SFRA APPENDIX A CBC WATERCOURSES

Sheet No: 9 of 18 Index Number: CBC_SFRA_9

This document is the property of Jeremy Benn Associates Ltd. It shall not be reproduced in whole or in part, nor disclosed to a third party, without the permission of Jeremy Benn Associates Ltd.





Legend

- Central Bedfordshire Council Boundary
- Watercourses
- CBC Key Watercourses**
- Potton Brook
- Cat Ditch
- Clipstone Brook
- Gransden Brook
- Honeydon Brook
- Mill Race
- Ouzel Brook
- Pix Brook
- Potton Brook
- River Flit
- River Gade
- River Great Ouse
- River Hit
- River Hiz
- River Ivel
- River Ivel Navigation
- River Lea or Lee
- River Ouzel
- River Rhee
- River Ver



REF	Date	Comments
A	July 16	Draft v1.0
B		
C		

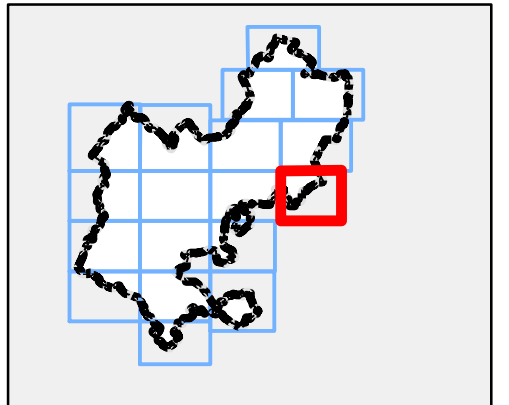
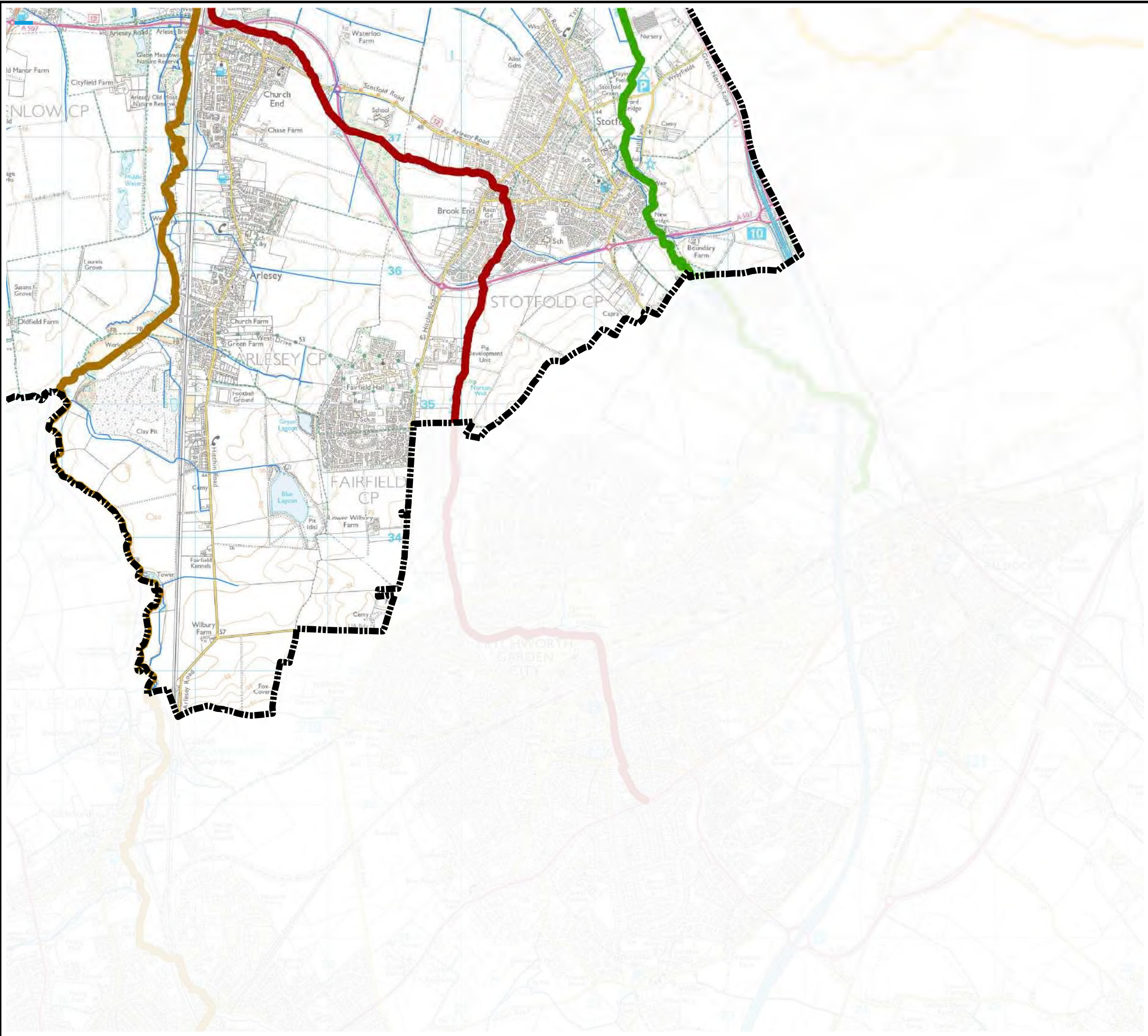
Reproduced from Ordnance Survey mapping with the permission of Ordnance Survey on behalf of the Controller of Her Majesty's Stationary Office. © Crown Copyright and database right 2016. Ordnance Survey 100049029. Central Bedfordshire Council
EA DRN: Special licence - Non-commercial Ref: Z31600

CENTRAL BEDFORDSHIRE COUNCIL SFRA APPENDIX A CBC WATERCOURSES

Sheet No: 10 of 18 Index Number: CBC_SFRA_10

This document is the property of Jeremy Benn Associates Ltd. It shall not be reproduced in whole or in part, nor disclosed to a third party, without the permission of Jeremy Benn Associates Ltd.





Legend

- Central Bedfordshire Council Boundary
- Watercourses
- CBC Key Watercourses**
- Potton Brook
- Cat Ditch
- Clipstone Brook
- Gransden Brook
- Honeydon Brook
- Mill Race
- Ouzel Brook
- Pix Brook
- Potton Brook
- River Flit
- River Gade
- River Great Ouse
- River Hit
- River Hiz
- River Ivel
- River Ivel Navigation
- River Lea or Lee
- River Ouzel
- River Rhee
- River Ver



REF	Date	Comments
A	July 16	Draft v1.0
B		
C		

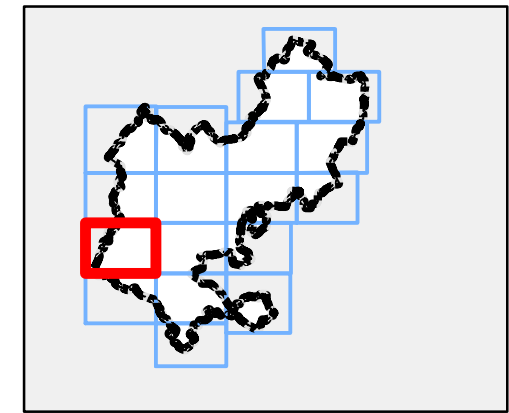
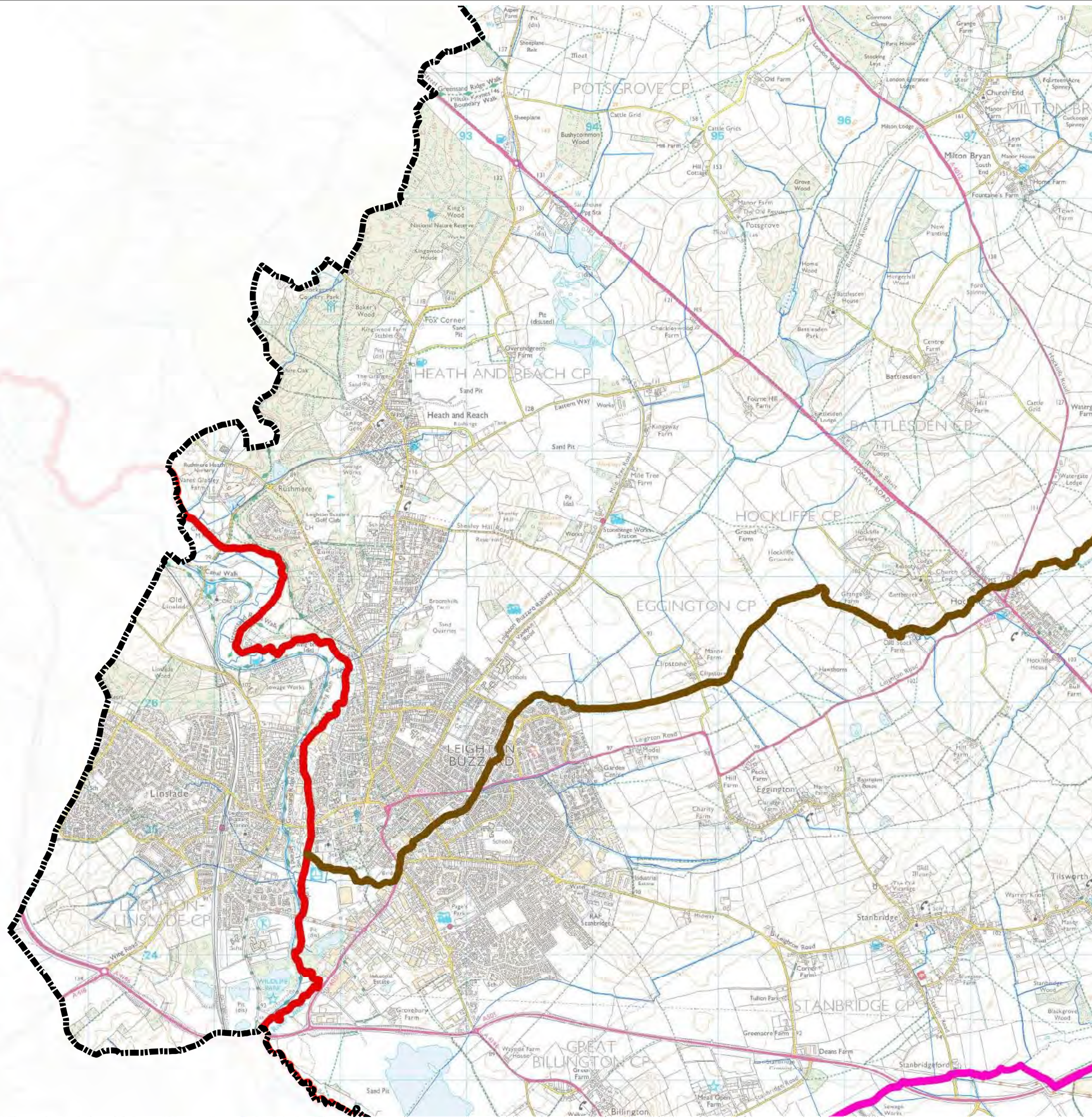
Reproduced from Ordnance Survey mapping with the permission of Ordnance Survey on behalf of the Controller of Her Majesty's Stationary Office. © Crown Copyright and database right 2016. Ordnance Survey 100049029. Central Bedfordshire Council
EA DRN: Special licence - Non-commercial Ref: Z31600

CENTRAL BEDFORDSHIRE COUNCIL SFRA APPENDIX A CBC WATERCOURSES

Sheet No: 11 of 18 Index Number: CBC_SFRA_11

This document is the property of Jeremy Benn Associates Ltd. It shall not be reproduced in whole or in part, nor disclosed to a third party, without the permission of Jeremy Benn Associates Ltd.





Legend

-  Central Bedfordshire Council Boundary
-  Watercourses
- CBC Key Watercourses**
-  Potton Brook
-  Cat Ditch
-  Clipstone Brook
-  Gransden Brook
-  Honeydon Brook
-  Mill Race
-  Ouzel Brook
-  Pix Brook
-  Potton Brook
-  River Flit
-  River Gade
-  River Great Ouse
-  River Hit
-  River Hiz
-  River Ivel
-  River Ivel Navigation
-  River Lea or Lee
-  River Ouzel
-  River Rhee
-  River Ver



REF	Date	Comments
A	July 16	Draft v1.0
B		
C		

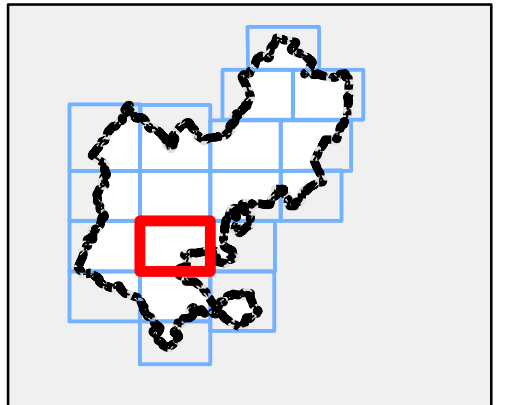
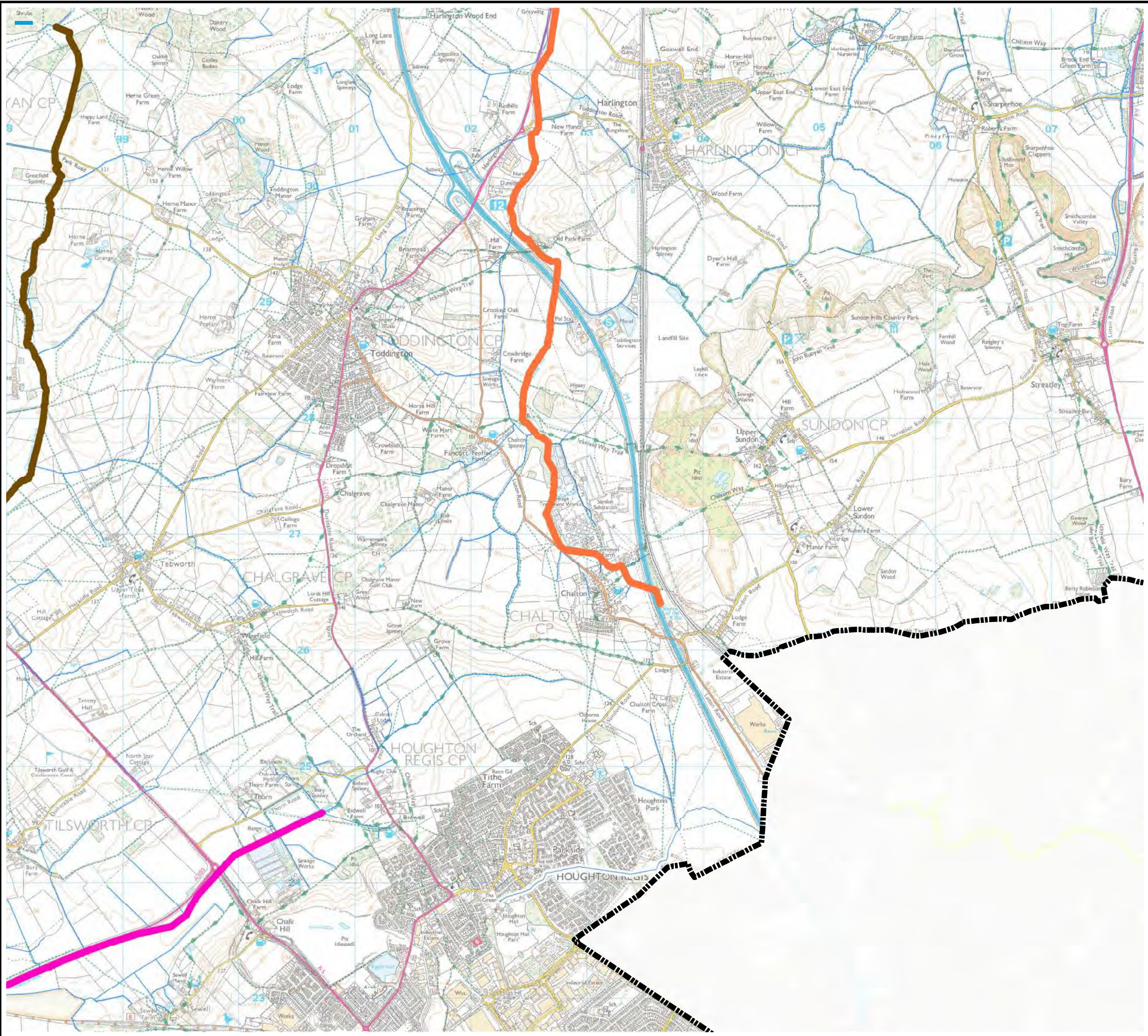
Reproduced from Ordnance Survey mapping with the permission of Ordnance Survey on behalf of the Controller of Her Majesty's Stationary Office. © Crown Copyright and database right 2016. Ordnance Survey 100049029. Central Bedfordshire Council
 EA DRN: Special licence – Non-commercial Ref: Z31600

CENTRAL BEDFORDSHIRE COUNCIL SFRA APPENDIX A CBC WATERCOURSES

Sheet No: 12 of 18 Index Number: CBC_SFRA_12

This document is the property of Jeremy Benn Associates Ltd. It shall not be reproduced in whole or in part, nor disclosed to a third party, without the permission of Jeremy Benn Associates Ltd.





Legend

- Central Bedfordshire Council Boundary
- Watercourses
- CBC Key Watercourses**
- Potton Brook
- Cat Ditch
- Clipstone Brook
- Gransden Brook
- Honeydon Brook
- Mill Race
- Ouzel Brook
- Pix Brook
- Potton Brook
- River Flit
- River Gade
- River Great Ouse
- River Hit
- River Hiz
- River Ivel
- River Ivel Navigation
- River Lea or Lee
- River Ouzel
- River Rhee
- River Ver



REF	Date	Comments
A	July 16	Draft v1.0
B		
C		

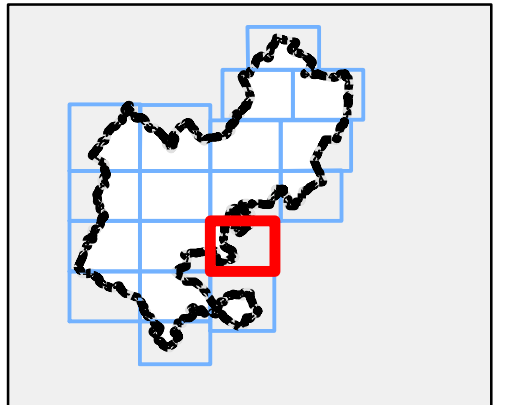
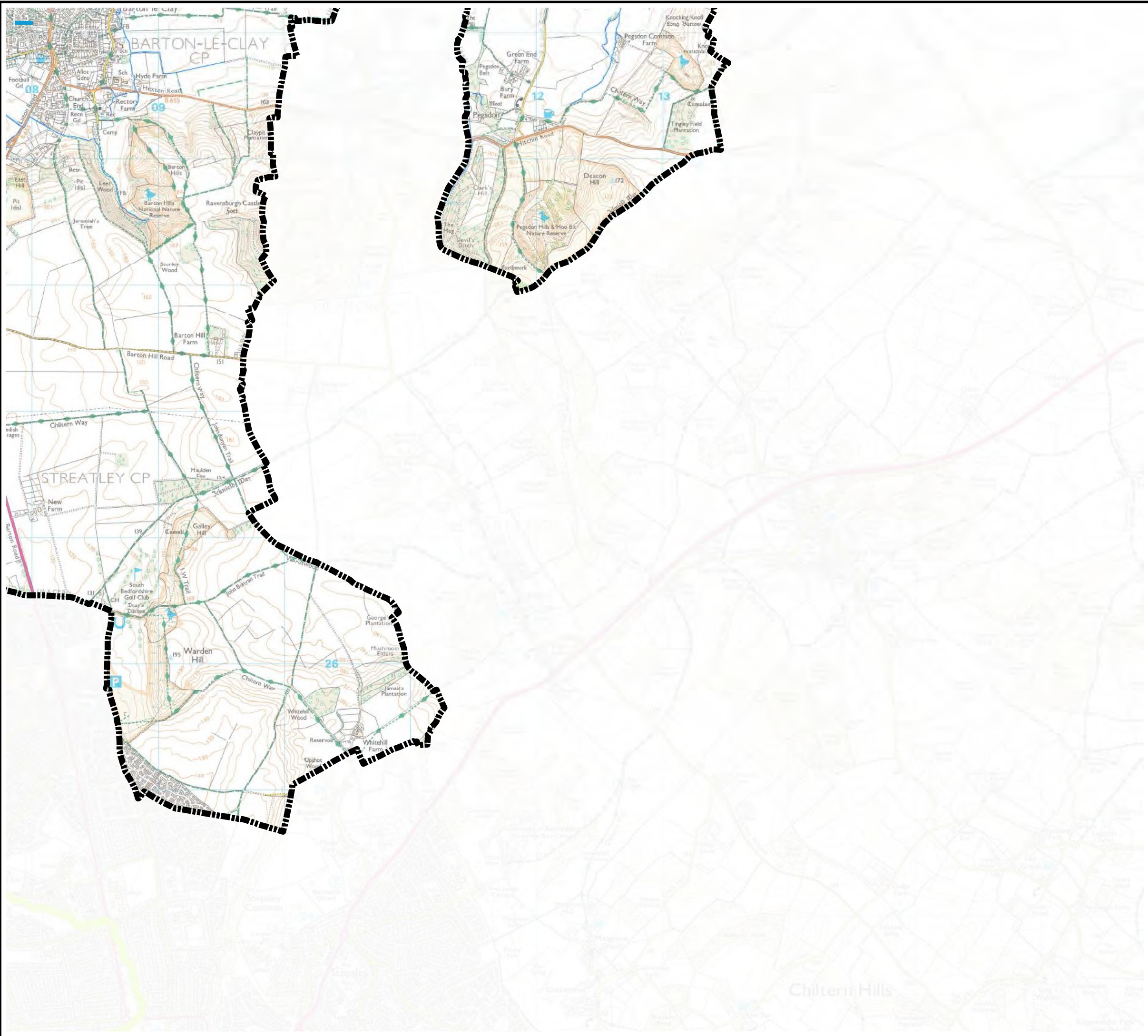
Reproduced from Ordnance Survey mapping with the permission of Ordnance Survey on behalf of the Controller of Her Majesty's Stationary Office. © Crown Copyright and database right 2016. Ordnance Survey 100049029. Central Bedfordshire Council
 EA DRN: Special licence – Non-commercial Ref: Z31600

CENTRAL BEDFORDSHIRE COUNCIL SFRA APPENDIX A CBC WATERCOURSES

Sheet No: 13 of 18 Index Number: CBC_SFRA_13

This document is the property of Jeremy Benn Associates Ltd. It shall not be reproduced in whole or in part, nor disclosed to a third party, without the permission of Jeremy Benn Associates Ltd.





Legend

- Central Bedfordshire Council Boundary
- Watercourses



REF	Date	Comments
A	July 16	Draft v1.0
B		
C		

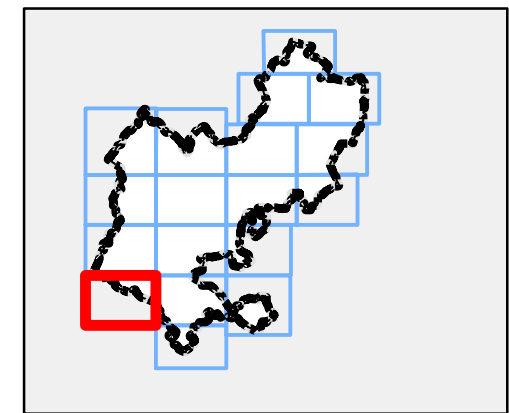
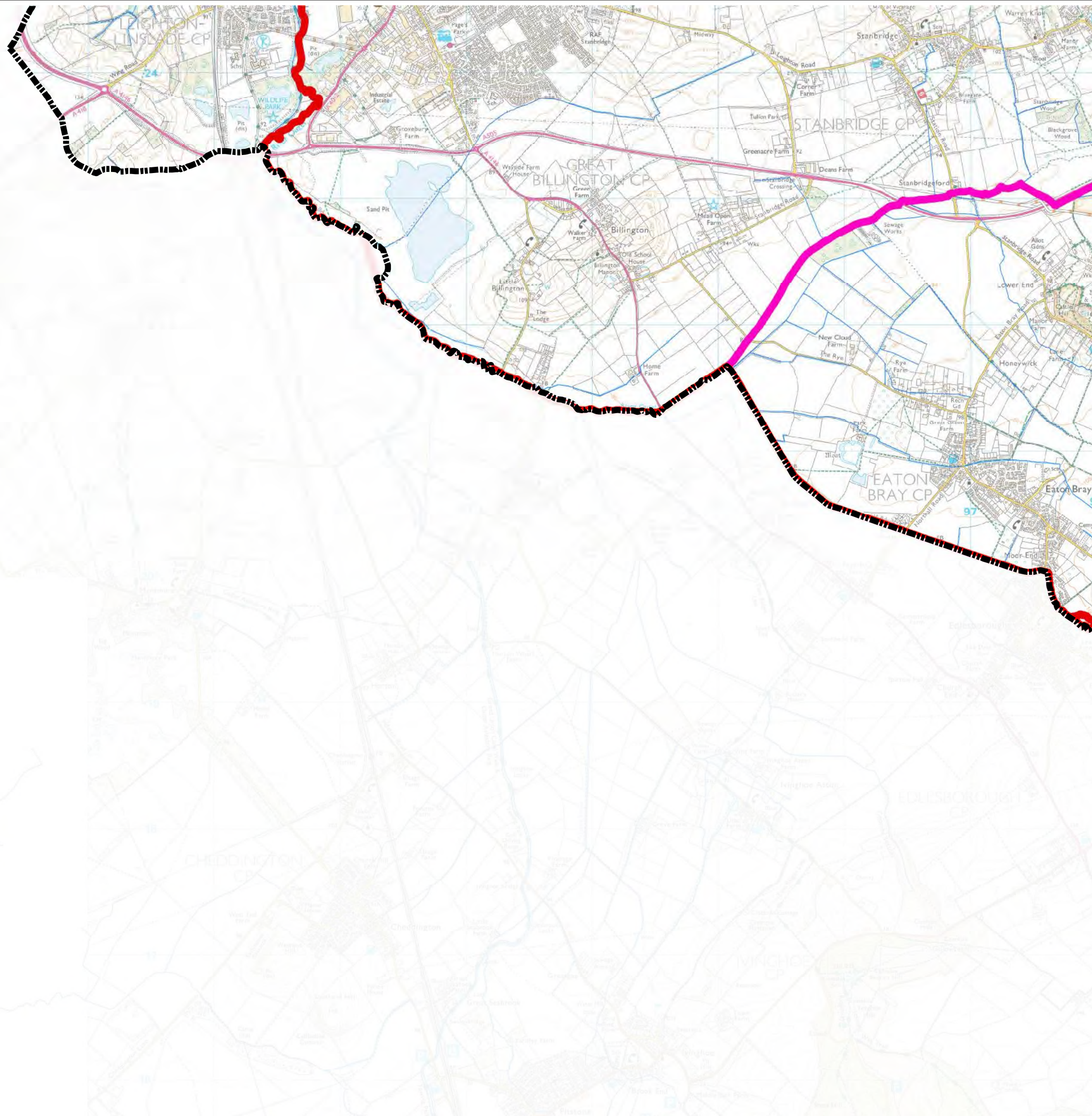
Reproduced from Ordnance Survey mapping with the permission of Ordnance Survey on behalf of the Controller of Her Majesty's Stationary Office. © Crown Copyright and database right 2016. Ordnance Survey 100049029.
 Central Bedfordshire Council
 EA DRN: Special licence – Non-commercial Ref: Z31600

CENTRAL BEDFORDSHIRE COUNCIL SFRA APPENDIX A CBC WATERCOURSES

Sheet No: 14 of 18 Index Number: CBC_SFRA_14

This document is the property of Jeremy Benn Associates Ltd. It shall not be reproduced in whole or in part, nor disclosed to a third party, without the permission of Jeremy Benn Associates Ltd.





Legend

- Central Bedfordshire Council Boundary
- Watercourses
- CBC Key Watercourses**
- Potton Brook
- Cat Ditch
- Clipstone Brook
- Gransden Brook
- Honeydon Brook
- Mill Race
- Ouzel Brook
- Pix Brook
- Potton Brook
- River Flit
- River Gade
- River Great Ouse
- River Hit
- River Hiz
- River Ivel
- River Ivel Navigation
- River Lea or Lee
- River Ouzel
- River Rhee
- River Ver



REF	Date	Comments
A	July 16	Draft v1.0
B		
C		

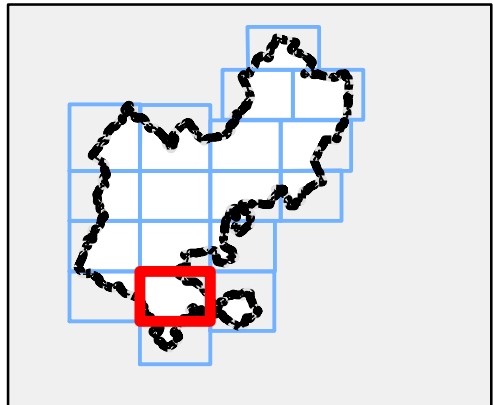
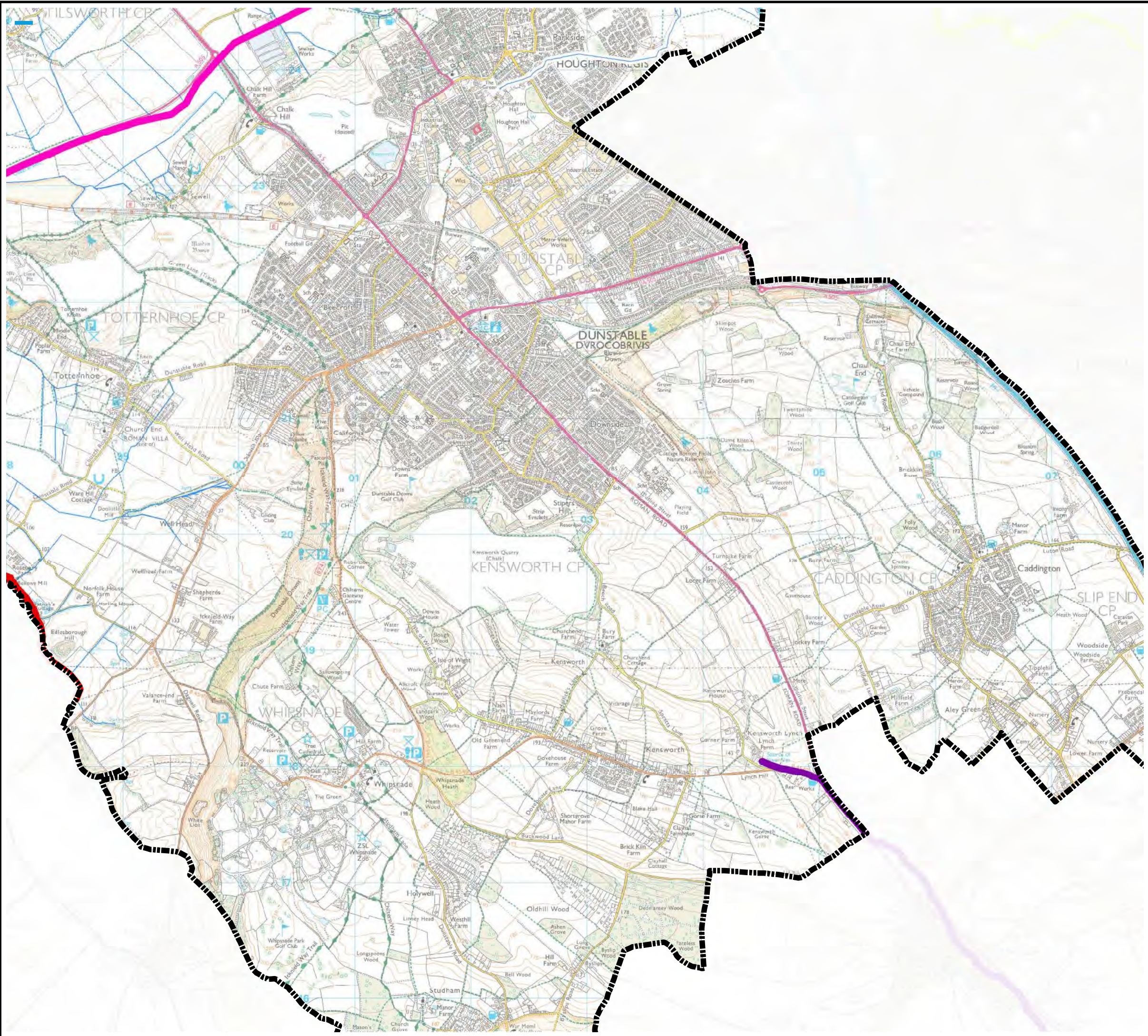
Reproduced from Ordnance Survey mapping with the permission of Ordnance Survey on behalf of the Controller of Her Majesty's Stationary Office. © Crown Copyright and database right 2016. Ordnance Survey 100049029.
 Central Bedfordshire Council
 EA DRN: Special licence - Non-commercial Ref: Z31600

CENTRAL BEDFORDSHIRE COUNCIL SFRA APPENDIX A CBC WATERCOURSES

Sheet No: 15 of 18 Index Number: CBC_SFRA_15

This document is the property of Jeremy Benn Associates Ltd. It shall not be reproduced in whole or in part, nor disclosed to a third party, without the permission of Jeremy Benn Associates Ltd.





Legend

-  Central Bedfordshire Council Boundary
-  Watercourses
- CBC Key Watercourses**
-  Potton Brook
-  Cat Ditch
-  Clipstone Brook
-  Gransden Brook
-  Honeydon Brook
-  Mill Race
-  Ouzel Brook
-  Pix Brook
-  Potton Brook
-  River Flit
-  River Gade
-  River Great Ouse
-  River Hit
-  River Hiz
-  River Ivel
-  River Ivel Navigation
-  River Lea or Lee
-  River Ouzel
-  River Rhee
-  River Ver



REF	Date	Comments
A	July 16	Draft v1.0
B		
C		

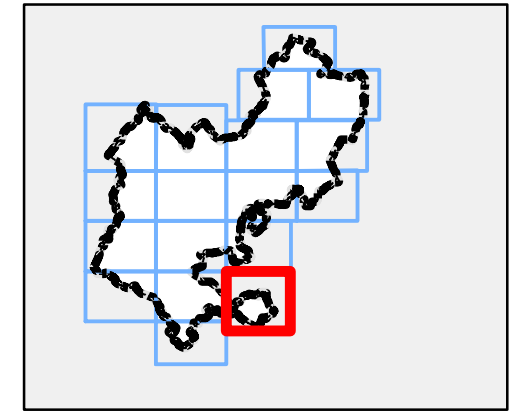
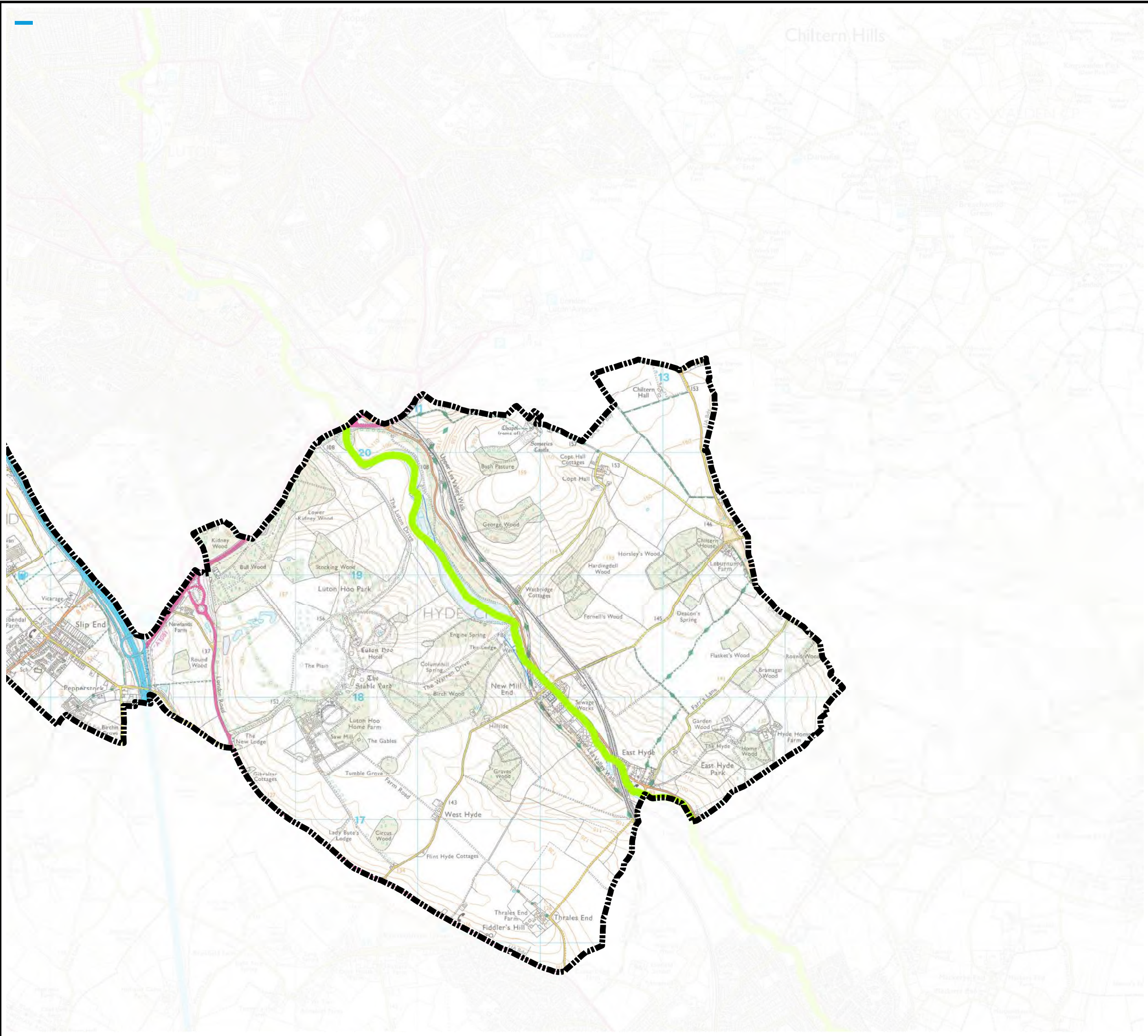
Reproduced from Ordnance Survey mapping with the permission of Ordnance Survey on behalf of the Controller of Her Majesty's Stationary Office. © Crown Copyright and database right 2016. Ordnance Survey 100049029. Central Bedfordshire Council
 EA DRN: Special licence - Non-commercial Ref: Z31600

CENTRAL BEDFORDSHIRE COUNCIL SFRA APPENDIX A CBC WATERCOURSES

Sheet No: 16 of 18 Index Number: CBC_SFRA_16

This document is the property of Jeremy Benn Associates Ltd. It shall not be reproduced in whole or in part, nor disclosed to a third party, without the permission of Jeremy Benn Associates Ltd.





Legend

-  **Central Bedfordshire Council Boundary**
-  Watercourses
- CBC Key Watercourses**
-  Potton Brook
-  Cat Ditch
-  Clipstone Brook
-  Gransden Brook
-  Honeydon Brook
-  Mill Race
-  Ouzel Brook
-  Pix Brook
-  Potton Brook
-  River Flit
-  River Gade
-  River Great Ouse
-  River Hit
-  River Hiz
-  River Ivel
-  River Ivel Navigation
-  River Lea or Lee
-  River Ouzel
-  River Rhee
-  River Ver



REF	Date	Comments
A	July 16	Draft v1.0
B		
C		

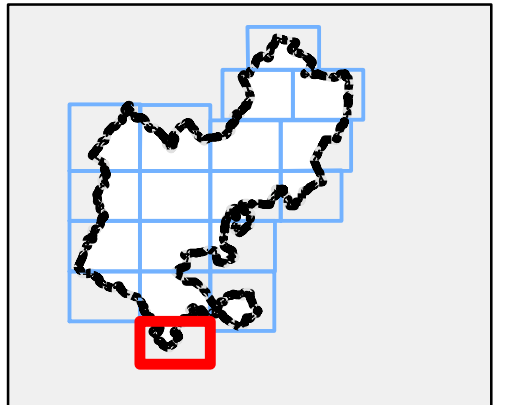
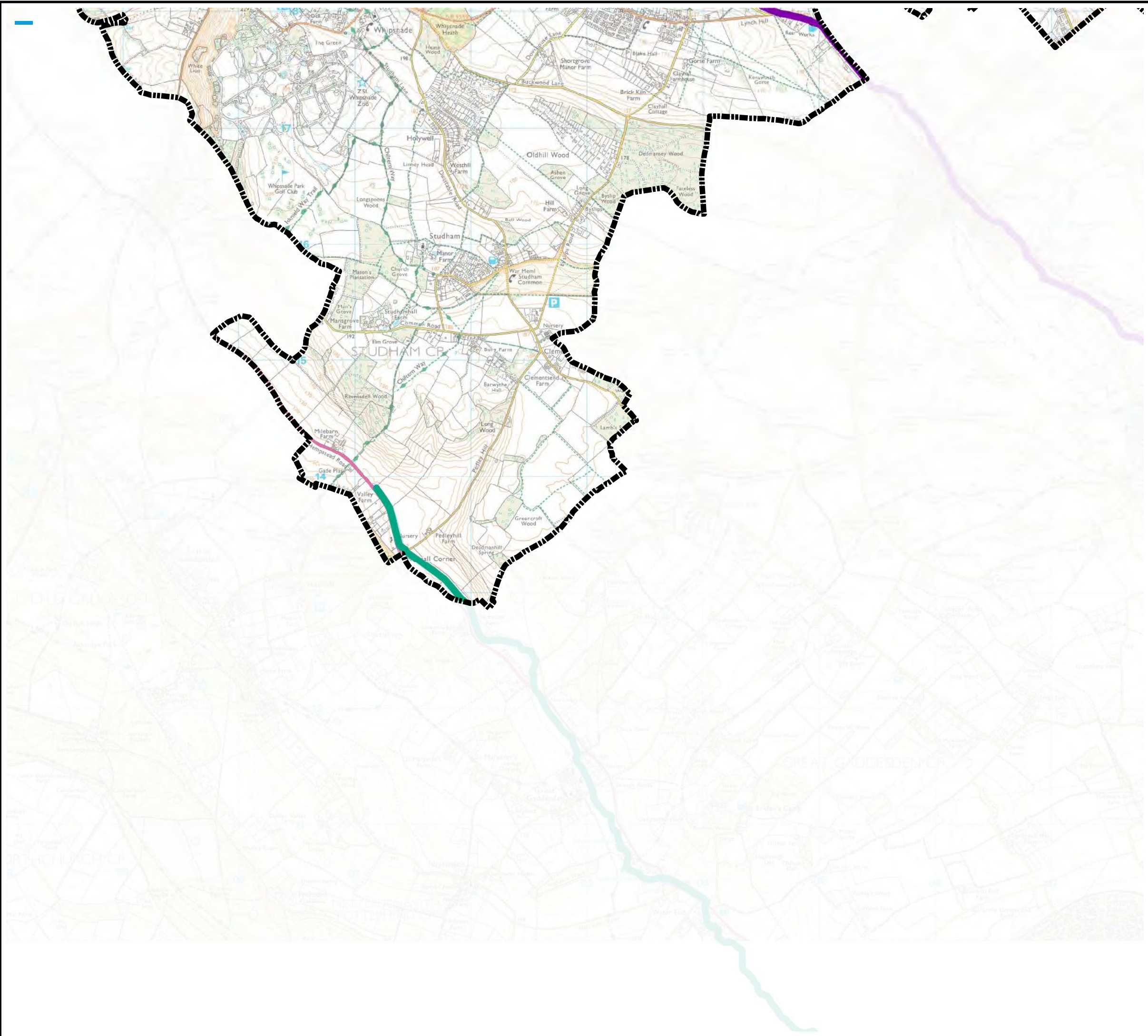
Reproduced from Ordnance Survey mapping with the permission of Ordnance Survey on behalf of the Controller of Her Majesty's Stationary Office. © Crown Copyright and database right 2016. Ordnance Survey 100049029. Central Bedfordshire Council
 EA DRN: Special licence – Non-commercial Ref: Z31600

CENTRAL BEDFORDSHIRE COUNCIL SFRA APPENDIX A CBC WATERCOURSES

Sheet No: 17 of 18 Index Number: CBC_SFRA_17

This document is the property of Jeremy Benn Associates Ltd. It shall not be reproduced in whole or in part, nor disclosed to a third party, without the permission of Jeremy Benn Associates Ltd.





Legend

- Central Bedfordshire Council Boundary
- Watercourses
- CBC Key Watercourses**
- Potton Brook
- Cat Ditch
- Clipstone Brook
- Gransden Brook
- Honeydon Brook
- Mill Race
- Ouzel Brook
- Pix Brook
- Potton Brook
- River Flit
- River Gade
- River Great Ouse
- River Hit
- River Hiz
- River Ivel
- River Ivel Navigation
- River Lea or Lee
- River Ouzel
- River Rhee
- River Ver



REF	Date	Comments
A	July 16	Draft v1.0
B		
C		

Reproduced from Ordnance Survey mapping with the permission of Ordnance Survey on behalf of the Controller of Her Majesty's Stationary Office. © Crown Copyright and database right 2016. Ordnance Survey 100049029. Central Bedfordshire Council
EA DRN: Special licence – Non-commercial Ref: Z31600

CENTRAL BEDFORDSHIRE COUNCIL SFRA APPENDIX A CBC WATERCOURSES

Sheet No: 18 of 18 Index Number: CBC_SFRA_18

This document is the property of Jeremy Benn Associates Ltd. It shall not be reproduced in whole or in part, nor disclosed to a third party, without the permission of Jeremy Benn Associates Ltd.

