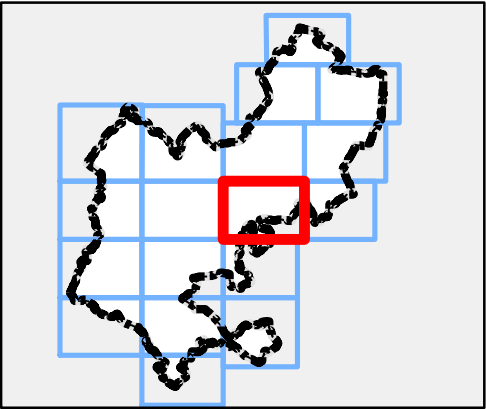


Notes

The climate change map shows the potential impacts that climate change may have on river flows and, subsequently, on flood events. Where models exist in the study area, a change factor has been applied to the 1 in 100 year flows.

Outside of the detailed model extents, where Flood Zones are still present, Jflow modelling has been undertaken, applying the relevant change factor to the 100-year flows.

Developers should assess the flood risk implications of climate change to development as part of a detailed Flood Risk Assessment.



Legend

- Central Bedfordshire Council boundary
- 100 year plus climate change 25%
- 100 year plus climate change 35%
- 100 year plus climate change 65%



REF	Date	Comments
A	Dec 16	Draft v.2.0
B		
C		

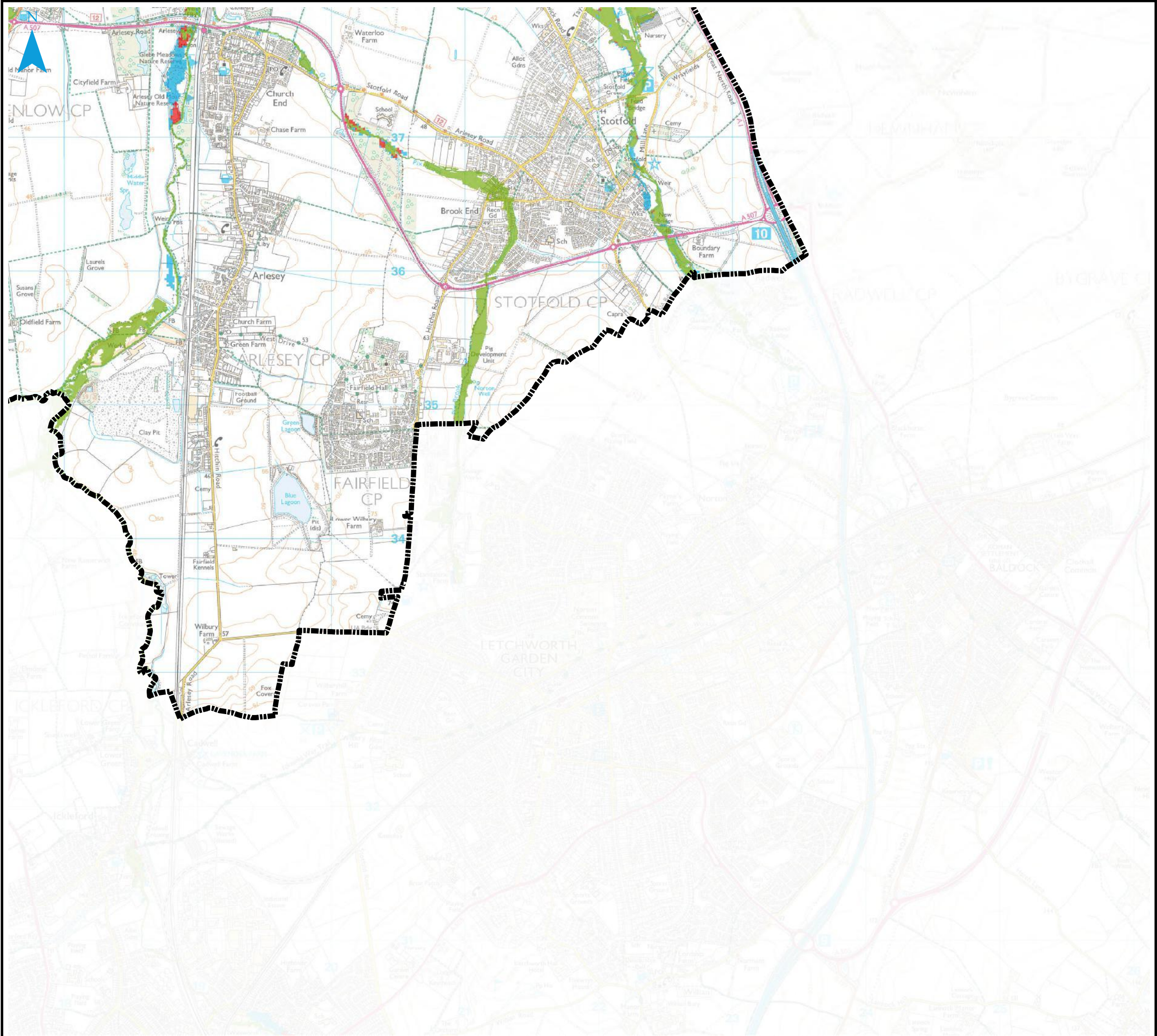
Reproduced from Ordnance Survey mapping with the permission of Ordnance Survey on behalf of the Controller of Her Majesty's Stationary Office. © Crown Copyright and database right 2016. Ordnance Survey 100049029. Central Bedfordshire Council

CENTRAL BEDFORDSHIRE COUNCIL SFRA APPENDIX C CLIMATE CHANGE MAPS

Sheet No: 10 of 18 Index Number: CBC_SFRA_10

This document is the property of Jeremy Benn Associates Ltd. It shall not be reproduced in whole or in part, nor disclosed to a third party, without the permission of Jeremy Benn Associates Ltd.



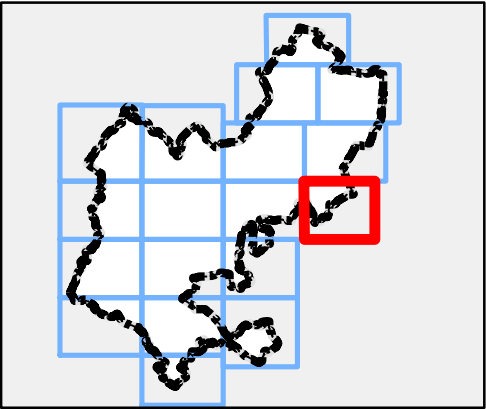


Notes

The climate change map shows the potential impacts that climate change may have on river flows and, subsequently, on flood events. Where models exist in the study area, a change factor has been applied to the 1 in 100 year flows.

Outside of the detailed model extents, where Flood Zones are still present, Jflow modelling has been undertaken, applying the relevant change factor to the 100-year flows.

Developers should assess the flood risk implications of climate change to development as part of a detailed Flood Risk Assessment.



Legend

- Central Bedfordshire Council boundary
- 100 year plus climate change 25%
- 100 year plus climate change 35%
- 100 year plus climate change 65%

00.30.61.21.8

km

REF	Date	Comments
A	Dec 16	Draft v.2.0
B		
C		

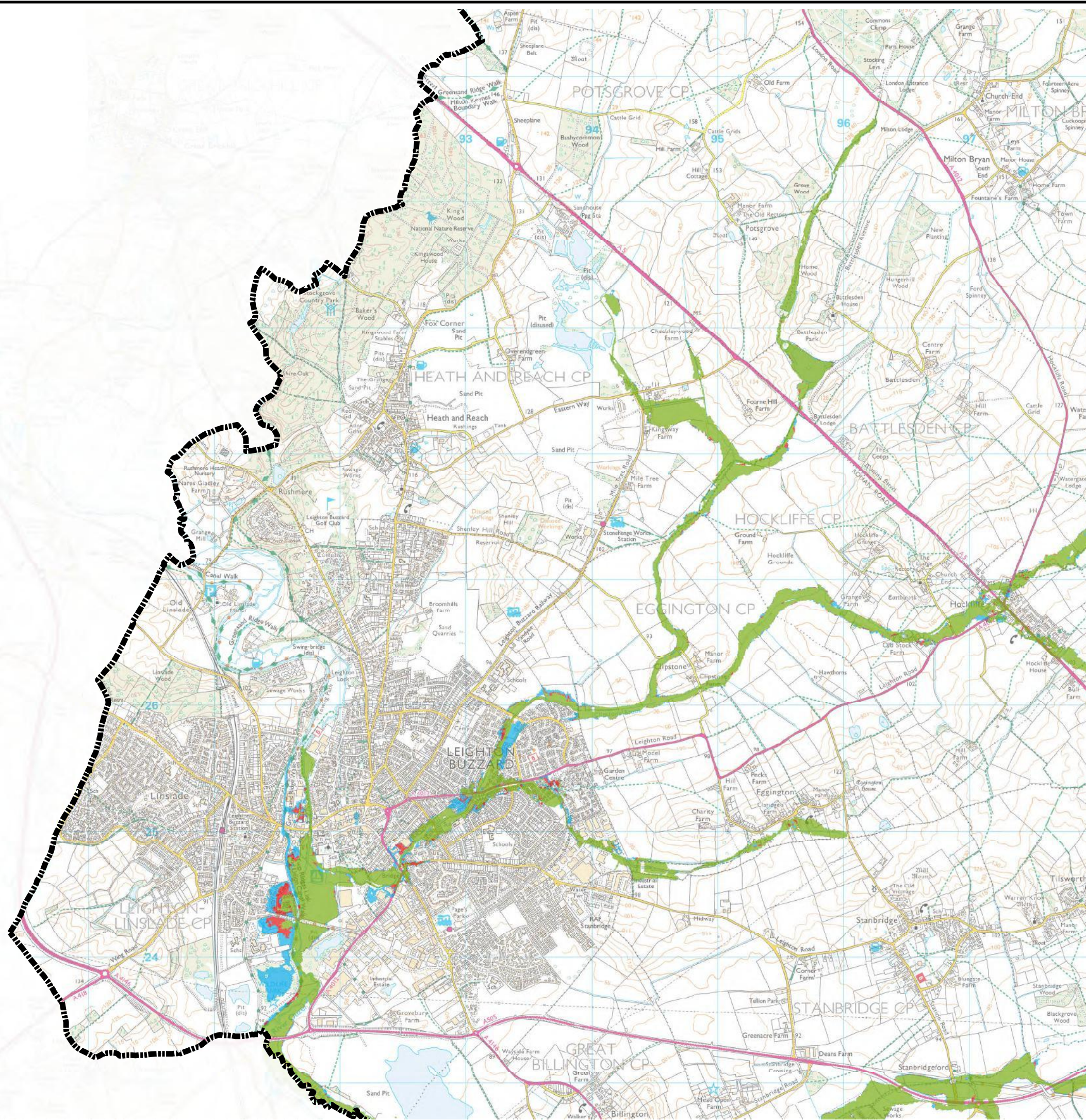
Reproduced from Ordnance Survey mapping with the permission of Ordnance Survey on behalf of the Controller of Her Majesty's Stationary Office.© Crown Copyright and database right 2016. Ordnance Survey 100049029. Central Bedfordshire Council

CENTRAL BEDFORDSHIRE
COUNCIL SFRA
APPENDIX C
CLIMATE CHANGE MAPS

Sheet No: 11 of 18 Index Number: CBC_SFRA_11

This document is the property of Jeremy Benn Associates Ltd. It shall not be reproduced in whole or in part, nor disclosed to a third party, without the permission of Jeremy Benn Associates Ltd.



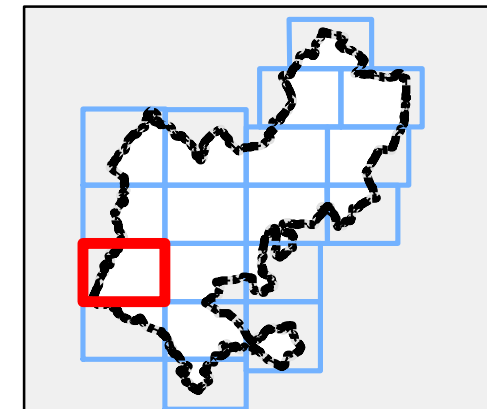


Notes

The climate change map shows the potential impacts that climate change may have on river flows and, subsequently, on flood events. Where models exist in the study area, a change factor has been applied to the 1 in 100 year flows.

Outside of the detailed model extents, where Flood Zones are still present, Jflow modelling has been undertaken, applying the relevant change factor to the 100-year flows.

Developers should assess the flood risk implications of climate change to development as part of a detailed Flood Risk Assessment.



Legend

- Central Bedfordshire Council boundary
- 100 year plus climate change 25%
- 100 year plus climate change 35%
- 100 year plus climate change 65%



REF	Date	Comments
A	Dec 16	Draft v.2.0
B		
C		

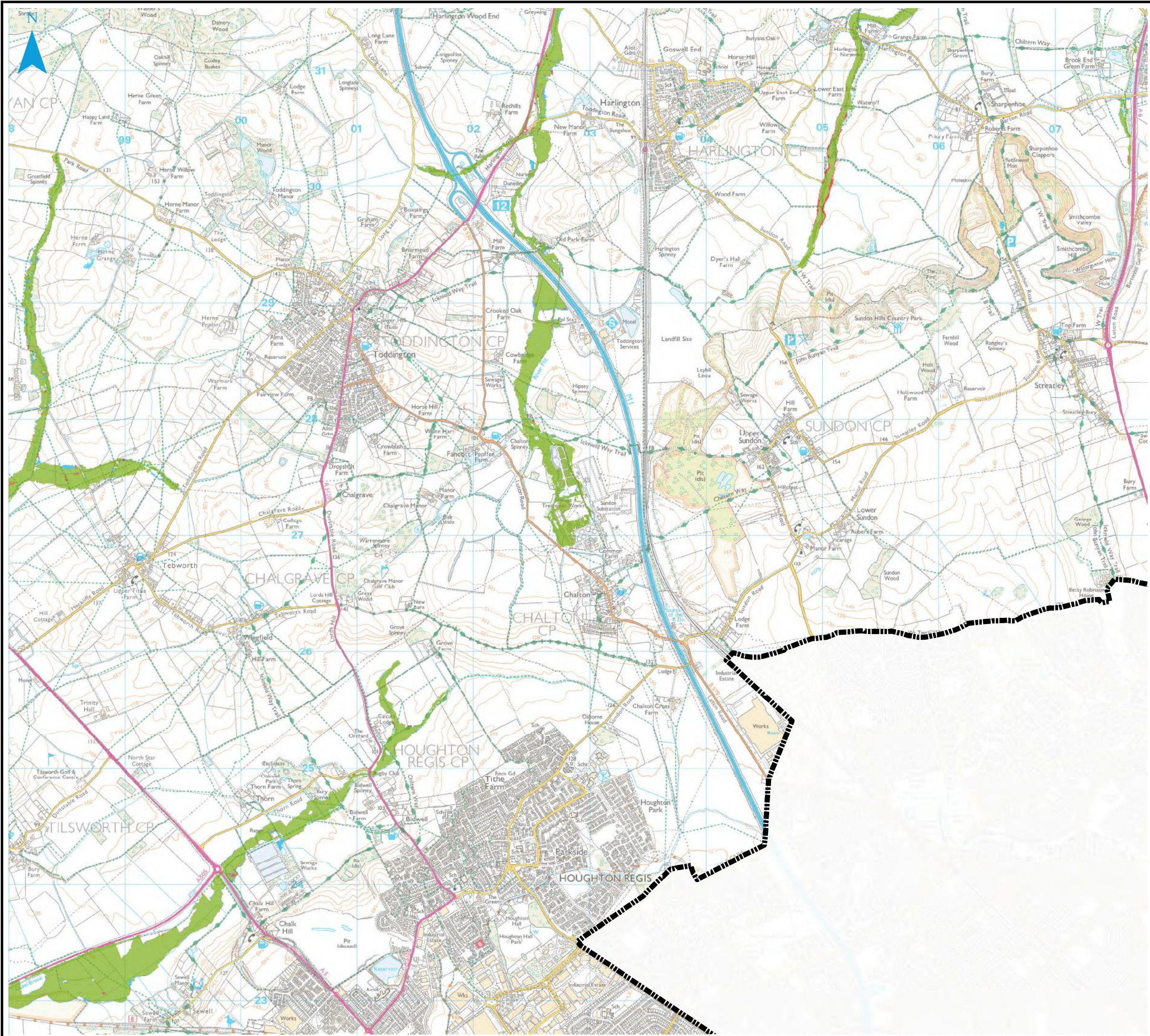
Reproduced from Ordnance Survey mapping with the permission of Ordnance Survey on behalf of the Controller of Her Majesty's Stationary Office. © Crown Copyright and database right 2016. Ordnance Survey 100049029. Central Bedfordshire Council

CENTRAL BEDFORDSHIRE COUNCIL SFRA APPENDIX C CLIMATE CHANGE MAPS

Sheet No: 12 of 18 Index Number: CBC_SFRA_12

This document is the property of Jeremy Benn Associates Ltd. It shall not be reproduced in whole or in part, nor disclosed to a third party, without the permission of Jeremy Benn Associates Ltd.



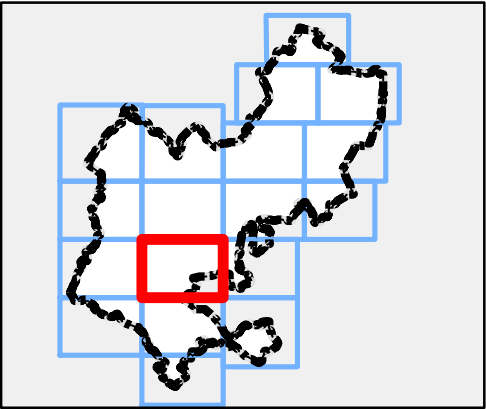


Notes

The climate change map shows the potential impacts that climate change may have on river flows and, subsequently, on flood events. Where models exist in the study area, a change factor has been applied to the 1 in 100 year flows.

Outside of the detailed model extents, where Flood Zones are still present, Jflow modelling has been undertaken, applying the relevant change factor to the 100-year flows.

Developers should assess the flood risk implications of climate change to development as part of a detailed Flood Risk Assessment.



Legend

- Central Bedfordshire Council boundary
- 100 year plus climate change 25%
- 100 year plus climate change 35%
- 100 year plus climate change 65%



REF	Date	Comments
A	Dec 16	Draft v.2.0
B		
C		

Reproduced from Ordnance Survey mapping with the permission of Ordnance Survey on behalf of the Controller of Her Majesty's Stationary Office. © Crown Copyright and database right 2016. Ordnance Survey 100049029. Central Bedfordshire Council

CENTRAL BEDFORDSHIRE COUNCIL SFRA APPENDIX C CLIMATE CHANGE MAPS

Sheet No: 13 of 18 Index Number: CBC_SFRA_13

This document is the property of Jeremy Benn Associates Ltd. It shall not be reproduced in whole or in part, nor disclosed to a third party, without the permission of Jeremy Benn Associates Ltd.



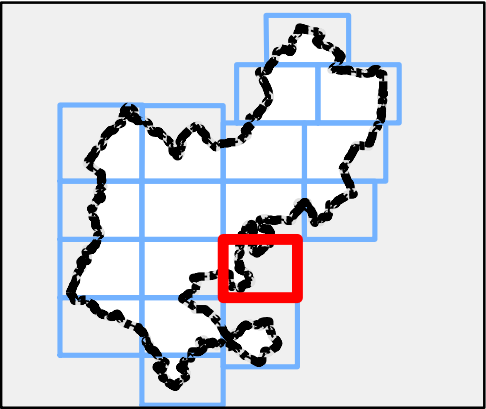


Notes

The climate change map shows the potential impacts that climate change may have on river flows and, subsequently, on flood events. Where models exist in the study area, a change factor has been applied to the 1 in 100 year flows.

Outside of the detailed model extents, where Flood Zones are still present, Jflow modelling has been undertaken, applying the relevant change factor to the 100-year flows.

Developers should assess the flood risk implications of climate change to development as part of a detailed Flood Risk Assessment.



Legend

- Central Bedfordshire Council boundary
- 100 year plus climate change 25%
- 100 year plus climate change 35%
- 100 year plus climate change 65%



REF	Date	Comments
A	Dec 16	Draft v.2.0
B		
C		

Reproduced from Ordnance Survey mapping with the permission of Ordnance Survey on behalf of the Controller of Her Majesty's Stationary Office.© Crown Copyright and database right 2016. Ordnance Survey 100049029. Central Bedfordshire Council

CENTRAL BEDFORDSHIRE
COUNCIL SFRA
APPENDIX C
CLIMATE CHANGE MAPS



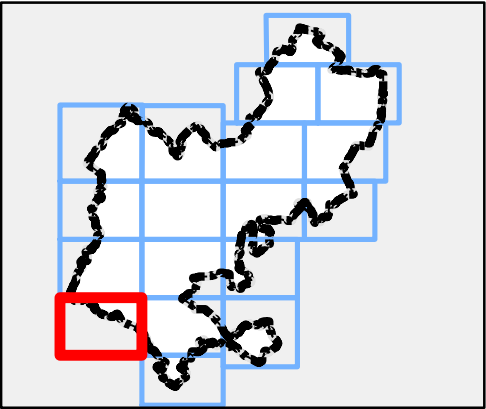


Notes

The climate change map shows the potential impacts that climate change may have on river flows and, subsequently, on flood events. Where models exist in the study area, a change factor has been applied to the 1 in 100 year flows.

Outside of the detailed model extents, where Flood Zones are still present, Jflow modelling has been undertaken, applying the relevant change factor to the 100-year flows.

Developers should assess the flood risk implications of climate change to development as part of a detailed Flood Risk Assessment.



Legend

-  Central Bedfordshire Council boundary
-  100 year plus climate change 25%
-  100 year plus climate change 35%
-  100 year plus climate change 65%



REF	Date	Comments
A	Dec 16	Draft v.2.0
B		
C		

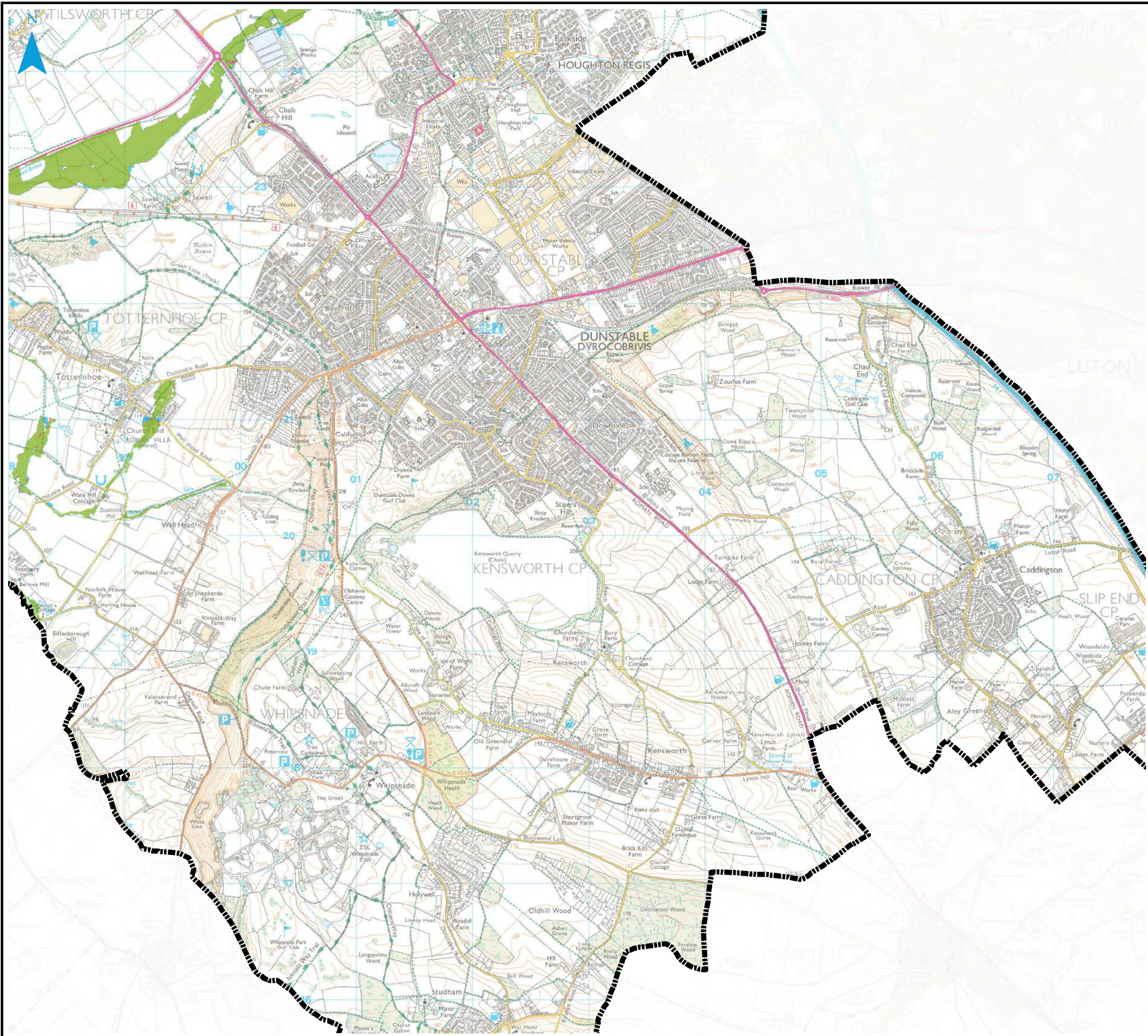
Reproduced from Ordnance Survey mapping with the permission of Ordnance Survey on behalf of the Controller of Her Majesty's Stationary Office.© Crown Copyright and database right 2016. Ordnance Survey 100049029. Central Bedfordshire Council

CENTRAL BEDFORDSHIRE COUNCIL SFRA APPENDIX C CLIMATE CHANGE MAPS

Sheet No: 15 of 18 Index Number: CBC_SFRA_15

This document is the property of Jeremy Benn Associates Ltd. It shall not be reproduced in whole or in part, nor disclosed to a third party, without the permission of Jeremy Benn Associates Ltd.



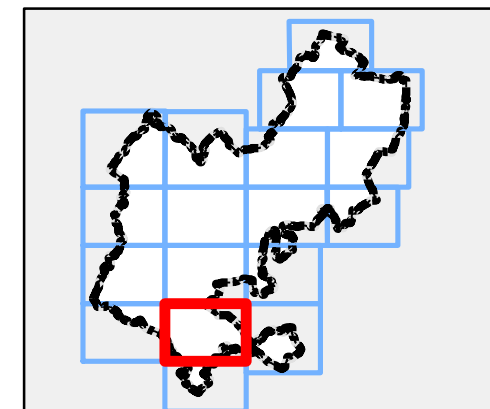


Notes

The climate change map shows the potential impacts that climate change may have on river flows and, subsequently, on flood events. Where models exist in the study area, a change factor has been applied to the 1 in 100 year flows.

Outside of the detailed model extents, where Flood Zones are still present, Jflow modelling has been undertaken, applying the relevant change factor to the 100-year flows.

Developers should assess the flood risk implications of climate change to development as part of a detailed Flood Risk Assessment.



Legend

- Central Bedfordshire Council boundary
- 100 year plus climate change 25%
- 100 year plus climate change 35%
- 100 year plus climate change 65%

0	0.35	0.7	1.4	2.1
km				
REF	Date	Comments		
A	Dec 16	Draft v.2.0		
B				
C				

Reproduced from Ordnance Survey mapping with the permission of Ordnance Survey on behalf of the Controller of Her Majesty's Stationary Office. © Crown Copyright and database right 2016. Ordnance Survey 100049029. Central Bedfordshire Council

CENTRAL BEDFORDSHIRE COUNCIL SFRA APPENDIX C CLIMATE CHANGE MAPS

Sheet No: 16 of 18 Index Number: CBC_SFRA_16

This document is the property of Jeremy Benn Associates Ltd. It shall not be reproduced in whole or in part, nor disclosed to a third party, without the permission of Jeremy Benn Associates Ltd.



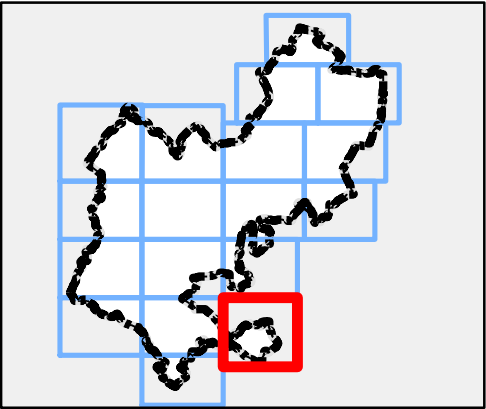


Notes

The climate change map shows the potential impacts that climate change may have on river flows and, subsequently, on flood events. Where models exist in the study area, a change factor has been applied to the 1 in 100 year flows.

Outside of the detailed model extents, where Flood Zones are still present, Jflow modelling has been undertaken, applying the relevant change factor to the 100-year flows.

Developers should assess the flood risk implications of climate change to development as part of a detailed Flood Risk Assessment.



Legend

- Central Bedfordshire Council boundary
- 100 year plus climate change 25%
- 100 year plus climate change 35%
- 100 year plus climate change 65%



REF	Date	Comments
A	Dec 16	Draft v.2.0
B		
C		

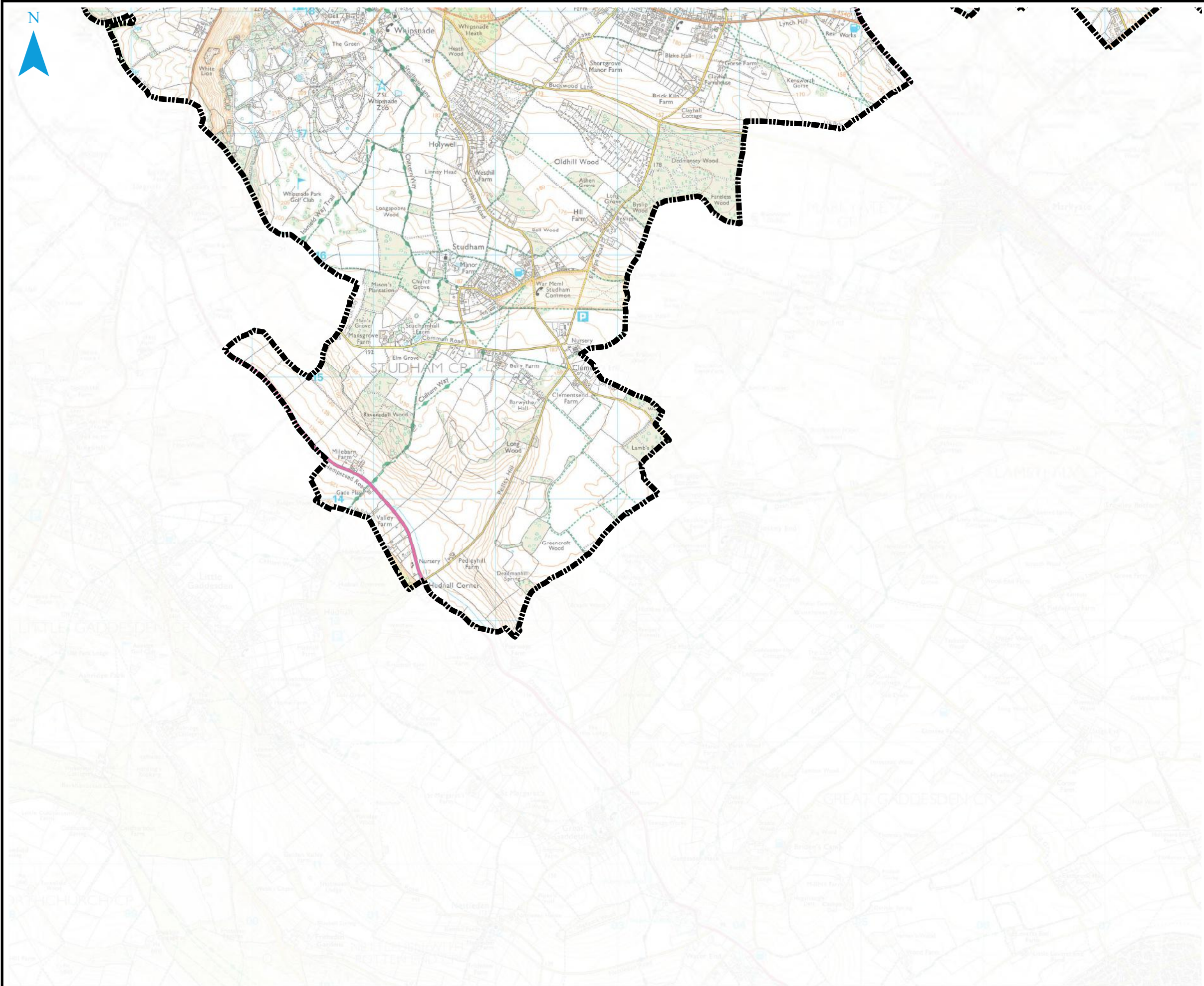
Reproduced from Ordnance Survey mapping with the permission of Ordnance Survey on behalf of the Controller of Her Majesty's Stationary Office.© Crown Copyright and database right 2016. Ordnance Survey 100049029. Central Bedfordshire Council

CENTRAL BEDFORDSHIRE
COUNCIL SFRA
APPENDIX C
CLIMATE CHANGE MAPS

Sheet No: 17 of 18 Index Number: CBC_SFRA_17

This document is the property of Jeremy Benn Associates Ltd. It shall not be reproduced in whole or in part, nor disclosed to a third party, without the permission of Jeremy Benn Associates Ltd.



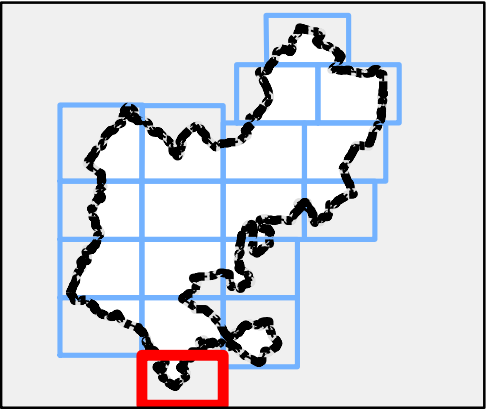


Notes

The climate change map shows the potential impacts that climate change may have on river flows and, subsequently, on flood events. Where models exist in the study area, a change factor has been applied to the 1 in 100 year flows.

Outside of the detailed model extents, where Flood Zones are still present, Jflow modelling has been undertaken, applying the relevant change factor to the 100-year flows.

Developers should assess the flood risk implications of climate change to development as part of a detailed Flood Risk Assessment.



Legend

- Central Bedfordshire Council boundary
- 100 year plus climate change 25%
- 100 year plus climate change 35%
- 100 year plus climate change 65%



REF	Date	Comments
A	Dec 16	Draft v.2.0
B		
C		

Reproduced from Ordnance Survey mapping with the permission of Ordnance Survey on behalf of the Controller of Her Majesty's Stationary Office.© Crown Copyright and database right 2016. Ordnance Survey 100049029. Central Bedfordshire Council

CENTRAL BEDFORDSHIRE
COUNCIL SFRA
APPENDIX C
CLIMATE CHANGE MAPS

Sheet No: 18 of 18 Index Number: CBC_SFRA_18

This document is the property of Jeremy Benn Associates Ltd. It shall not be reproduced in whole or in part, nor disclosed to a third party, without the permission of Jeremy Benn Associates Ltd.

