

Central Bedfordshire Council Local Plan (2015-2035)

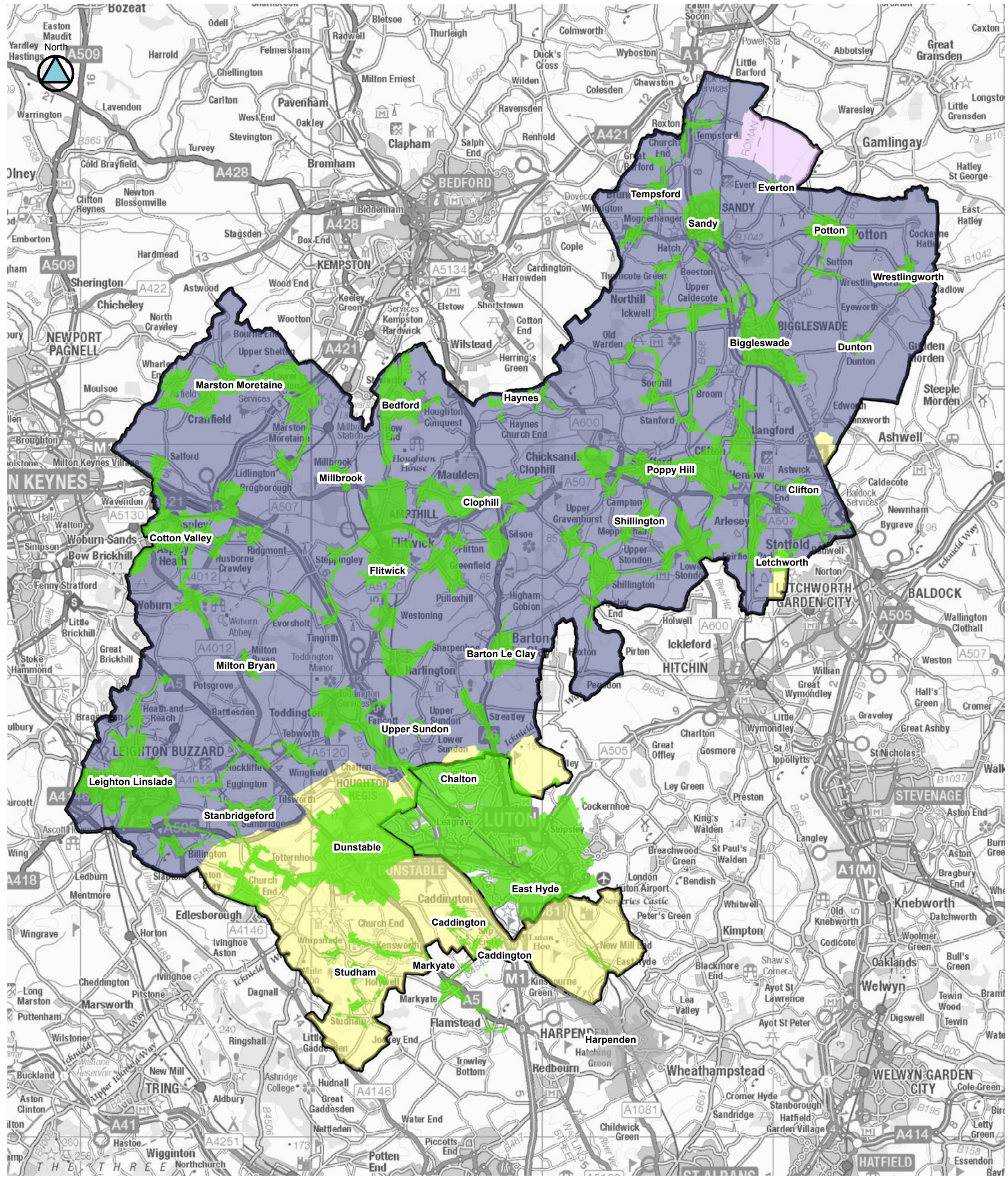
Water Cycle Study

Maps 1-7

(July 2017)

Map 1 Water Resources RAG Assessment

Map 2 Water Supply RAG Assessment



LEGEND

Water Resources RAG Water Utility

	Green		Affinity Water
			Anglian Water
			Cambridge Water
			Central Bedfordshire District

NOTES:

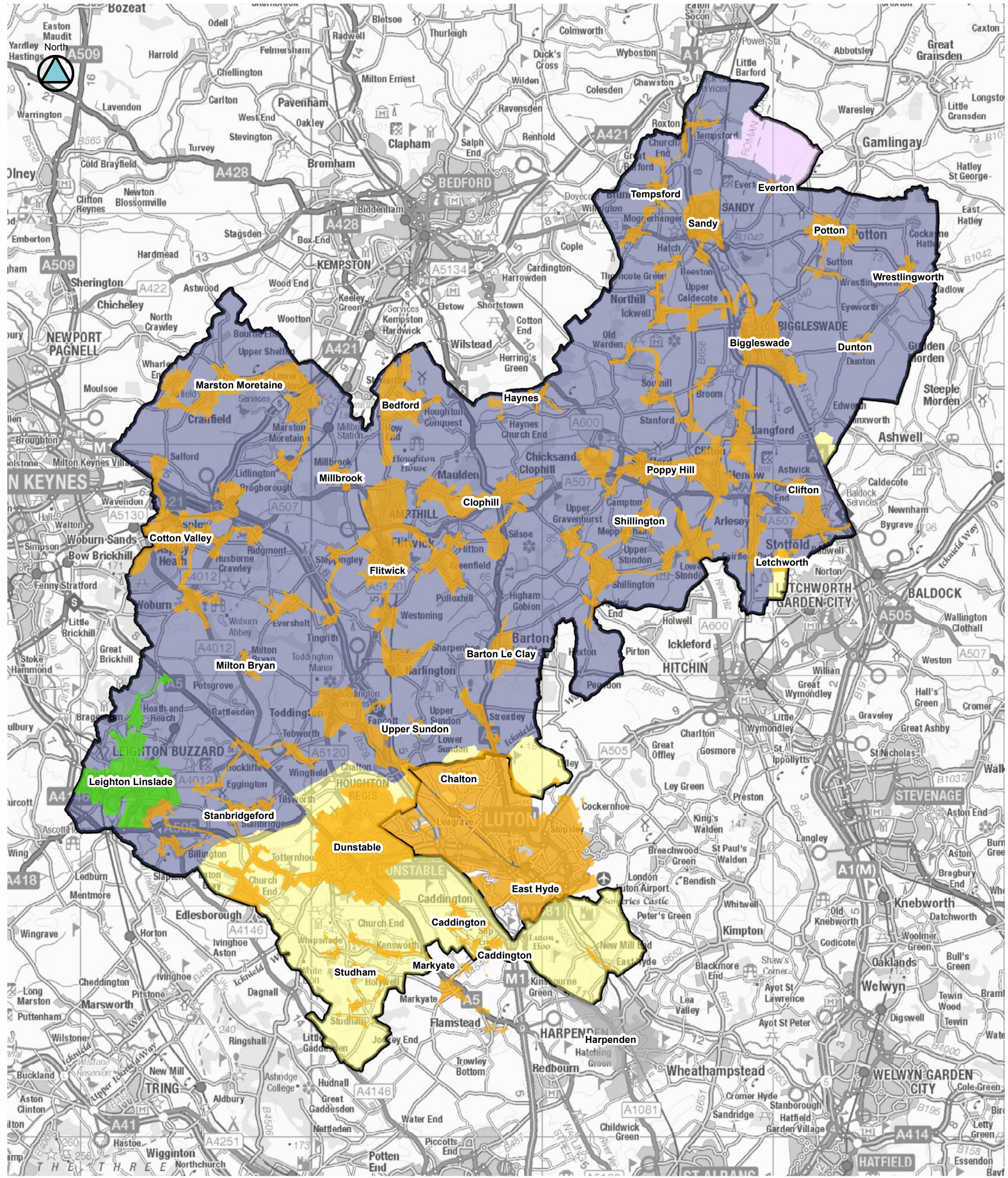
RAG results have been summarised by WwTW catchment area to provide consistent spatial reporting. See table 10-1 of the stage 1 report for more details.

Contains OS data © Crown copyright and database right (2017)



Water Cycle Study
Stage 1

RAG Assessment
Map 1: Water Resources



LEGEND

Water Supply RAG

Water Utility

Amber

Green

Amber

Green

Amber

Green

Affinity Water

Anglian Water

Cambridge Water

Central Bedfordshire District

NOTES:

RAG results have been summarised by WwTW catchment area to provide consistent spatial reporting. See table 10-1 of the stage 1 report for more details.

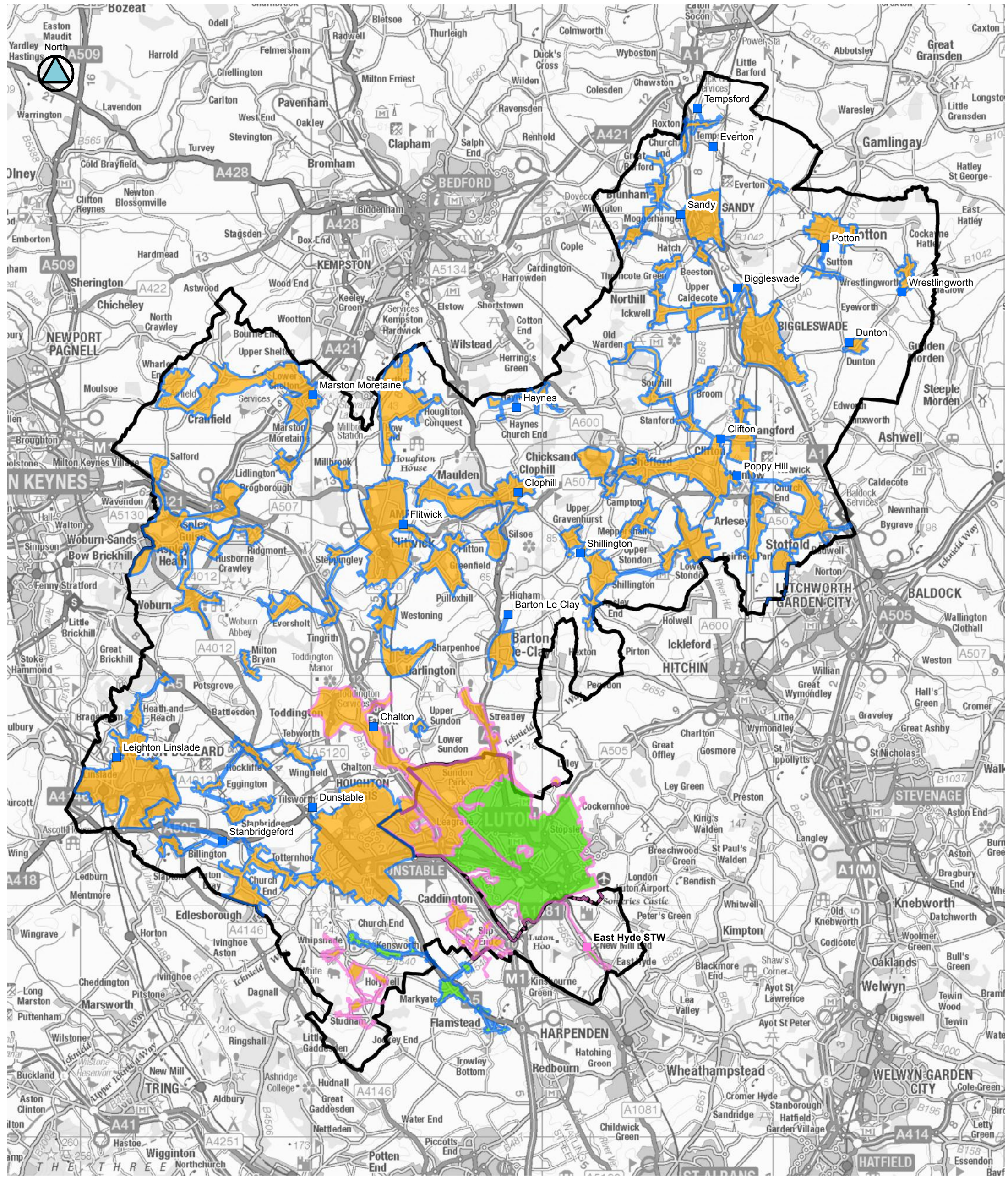
Contains OS data © Crown copyright and database right (2017)

Water Cycle Study
Stage 1

RAG Assessment
Map 2: Water Supply

Map 3 Sewerage RAG Assessment

Map 4 Wastewater Treatment Headroom RAG Assessment



LEGEND

- Sewerage RAG**
- Anglian Water, Amber
 - Anglian Water, Green
 - Thames Water, Amber
 - Thames Water, Green
- Central Bedfordshire

NOTES:

RAG results have been summarised by WwTW catchment area to provide consistent spatial reporting. See table 10-1 of the stage 1 report for more details.

Note Anglian Water WwTW catchment boundaries were supplied trimmed to the CBC boundary.

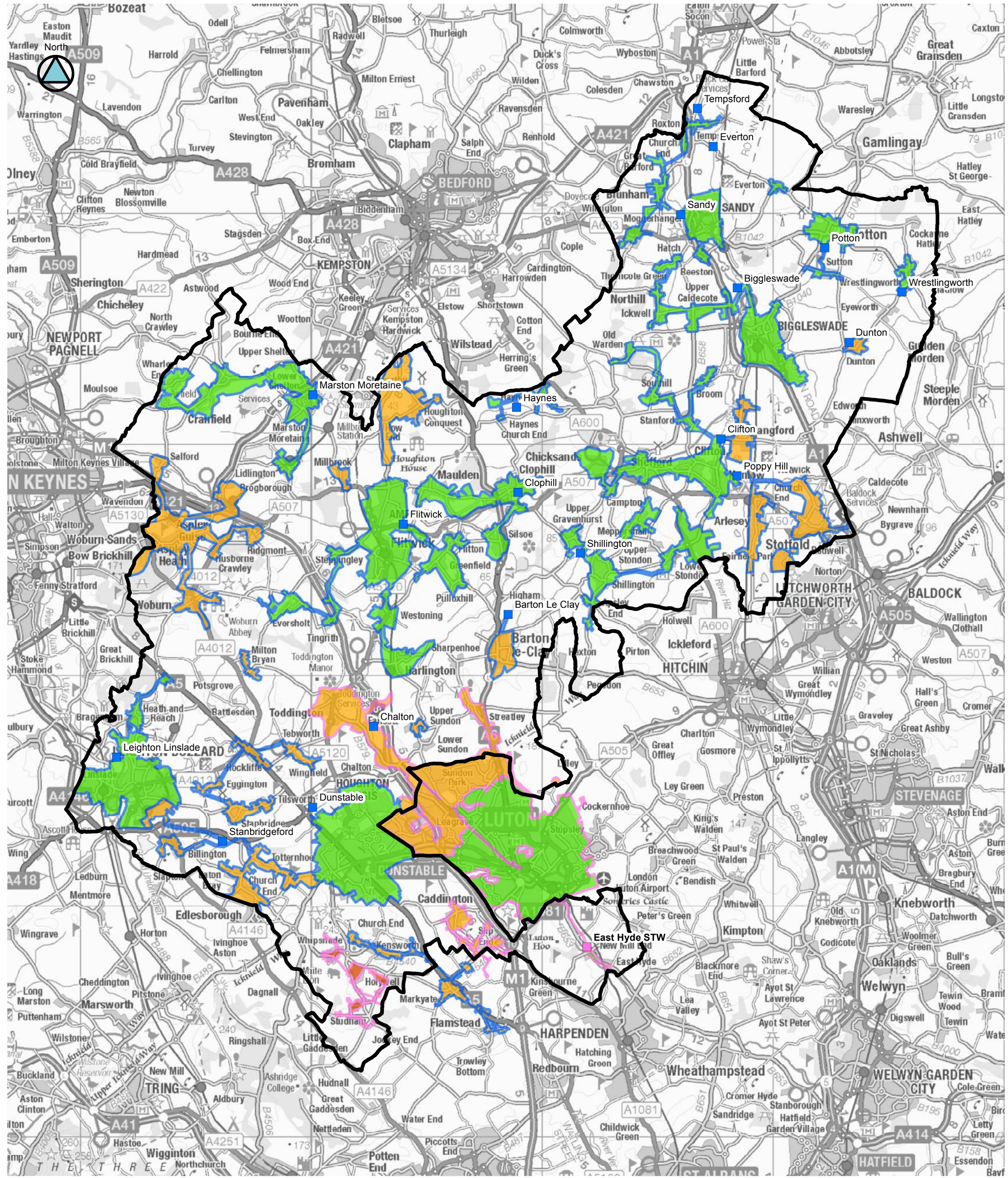
Contains OS data © Crown copyright and database right (2017)



Water Cycle Study
Stage 1

RAG Assessment
Map 3: Sewerage

Scale: 1:150,000



LEGEND

Central Bedfordshire

WwTW Headroom RAG

- Anglian Water, Amber
- Anglian Water, Green
- Thames Water, Red
- Thames Water, Amber
- Thames Water, Green

NOTES:

RAG results have been summarised by WwTW catchment area to provide consistent spatial reporting. See table 10-1 of the stage 1 report for more details.

Note Anglian Water WwTW catchment boundaries were supplied trimmed to the CBC boundary.

Contains OS data © Crown copyright and database right (2017)



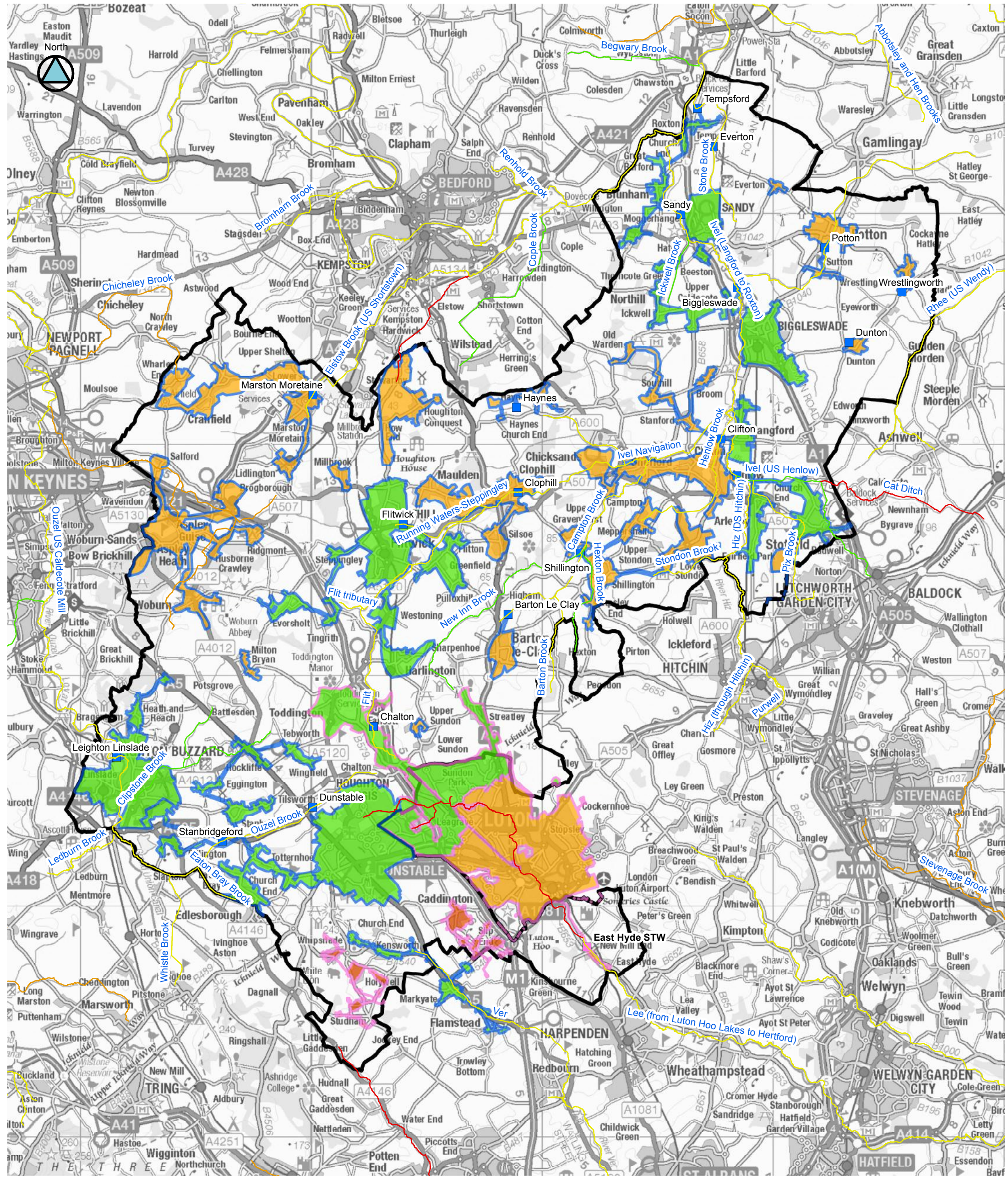
Water Cycle Study
Stage 1

RAG Assessment
Map 4: Wastewater Treatment

Scale: 1:150,000

Map 5 Water Quality RAG Assessment

Map 6 Wastewater Treatment Flood Risk RAG Assessment



LEGEND

Central Bedfordshire

WFD Overall Water Body Class

<Null>

High

Good

Moderate

Poor

Bad

Water Quality RAG

Anglian Water, Amber

Anglian Water, Green

Thames Water, Red

Thames Water, Amber

Thames Water, Green

NOTES:

RAG results have been summarised by WwTW catchment area to provide consistent spatial reporting. See table 10-1 of the stage 1 report for more details.

Note Anglian Water WwTW catchment boundaries were supplied trimmed to the CBC boundary.

Contains OS data © Crown copyright and database right (2017)

JBA consulting

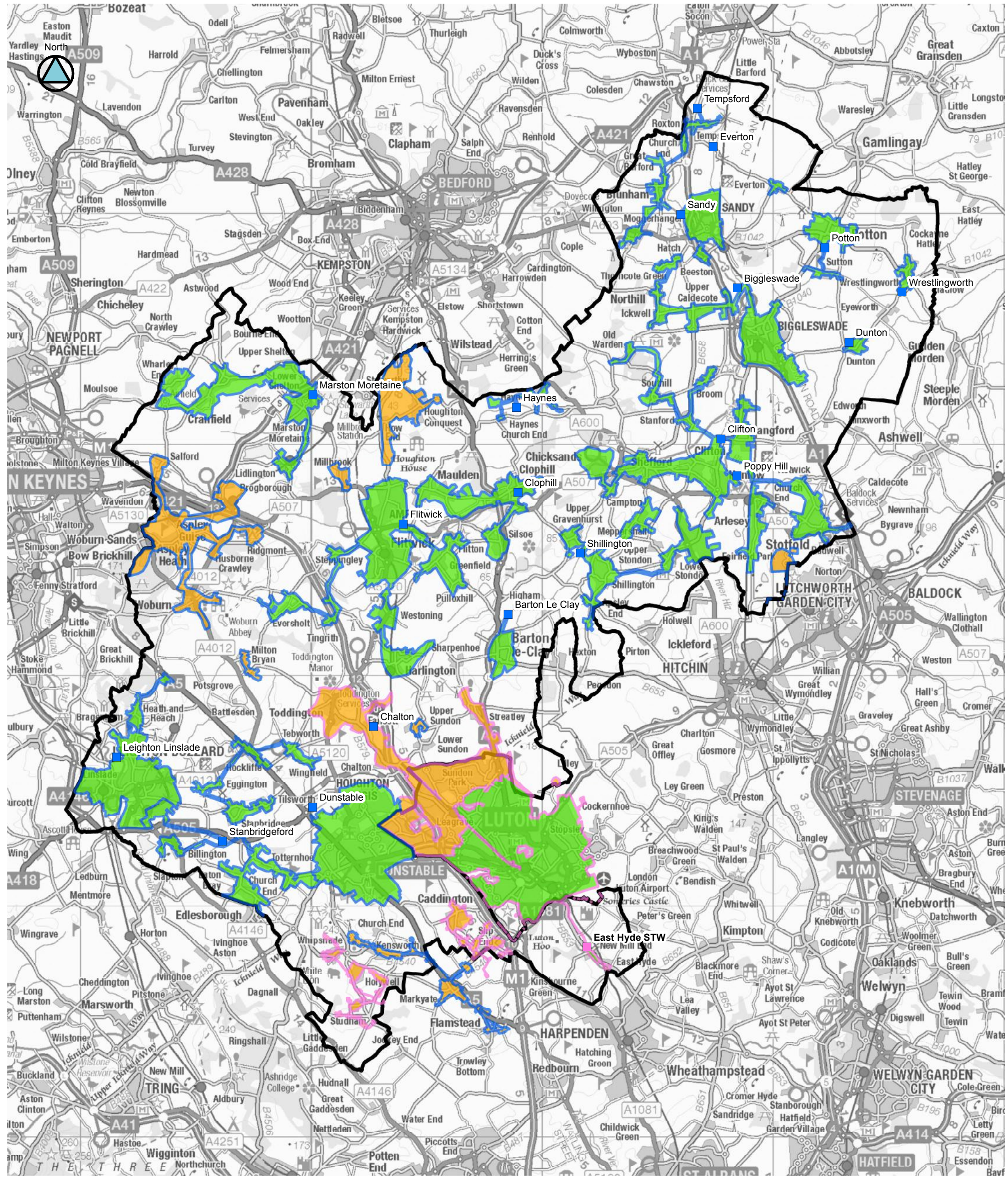
Central Bedfordshire

Water Cycle Study Stage 1

RAG Assessment

Map 5: Water Quality

Scale: 1:150,000



LEGEND

- Central Bedfordshire
- WwTW Flood Risk RAG**
- Anglian Water, Amber
 - Anglian Water, Green
 - Thames Water, Amber
 - Thames Water, Green

NOTES:

RAG results have been summarised by WwTW catchment area to provide consistent spatial reporting. See table 10-1 of the stage 1 report for more details.

Note Anglian Water WwTW catchment boundaries were supplied trimmed to the CBC boundary.

Contains OS data © Crown copyright and database right (2017)



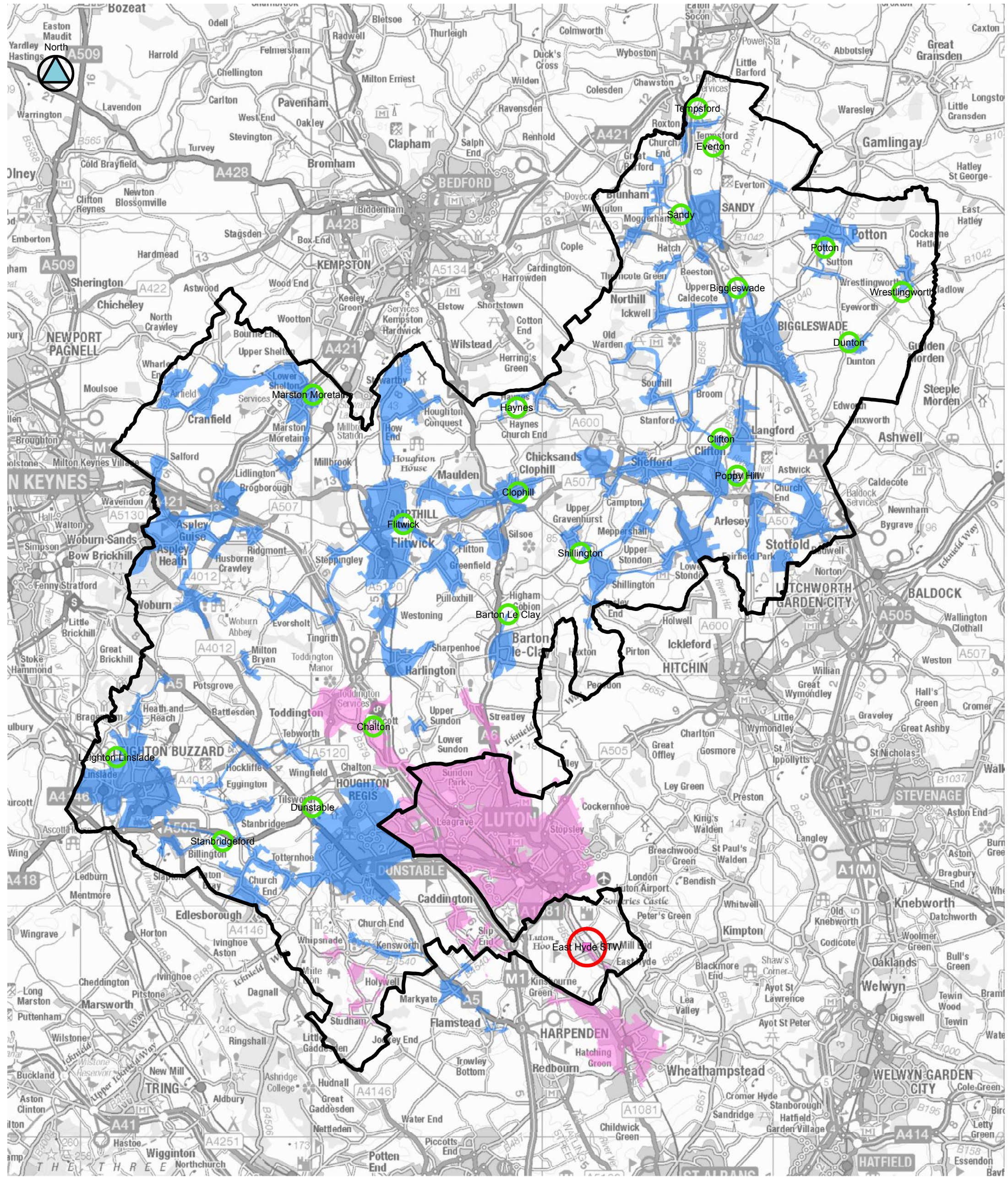
Water Cycle Study
Stage 1

RAG Assessment
Map 6: WwTW Flood Risk

Scale: 1:150,000

Map 7

Odour risk screening areas



LEGEND

WwTW catchments - company

- Anglian Water
- Thames Water
- TW recommended 800m odour screening zone
- TW recommended 400m odour screening zone

NOTES:

Anglian Water recommended use of a 400m odour risk screening zone around treatment works, whereas Thames Water recommended 800m. In the absence of national guidance, both methods have been applied in the appropriate company areas.

Contains OS data © Crown copyright and database right (2017)

Water Cycle Study

Stage 1

Map 7: Wastewater Treatment Odour Screening Zones

Scale: 1:150,000